

WESTERN SYDNEY
UNIVERSITY



UNLIMITED.



International Student Guide

2018



Contents

4

WELCOME

12

RESEARCH

23

CAREERS

32

STUDY OPTIONS

72

RESEARCH COURSES

5

RANKINGS

14

THE ACADEMY

24

STUDY IN SYDNEY

47

PATHWAYS TO WESTERN
SYDNEY UNIVERSITY

74

PATHWAYS PROGRAM

6

WHY STUDY AT
WESTERN SYDNEY?

16

SCHOLARSHIPS

26

LIVING IN WESTERN
SYDNEY

49

UNLIMITED DEGREES

85

APPLICATION PROCESS

9

ALUMNI

18

CAMPUSES

28

ACCOMMODATION

50

UNDERGRADUATE
COURSES

86

ENTRY REQUIREMENTS

10

WORLD CLASS

22

STUDENT SUPPORT

30

LIVING COSTS

61

POSTGRADUATE
COURSES

87

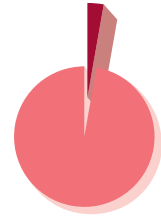
CONTACT INFORMATION



Female Orphan School, Parramatta South campus

We believe in a world of unlimited opportunity, where the potential for success is unlimited for those with talent, drive and ambition.

Success starts here.



TOP 2%
IN THE WORLD



TOP 20
FOR RESEARCH PERFORMANCE



9
CAMPUSES



10
SCHOOLS



45,000
STUDENTS



160
NATIONALITIES

WELCOME TO WESTERN SYDNEY

Western Sydney University is a world-class university with international reach and a reputation for academic excellence and impact-driven research.

Emboldened by a belief in remaining agile to best serve its community, the University is located in the heart of Western Sydney, the fastest growing and most dynamic area in the country. It is ideally placed to give students global perspective and opportunity.

In 2017, Western Sydney University was ranked in the top two per cent of universities worldwide by the prestigious Times Higher Education World University Rankings. We continue to strengthen our international profile and research standing, building on the innovative work we have already undertaken in technology-enhanced learning and teaching.

Western Sydney University is pioneering a model of co-created learning that treats students as partners.

Working closely with its community, Western Sydney University is committed to unlocking the potential of its students as future change-makers and leaders in the community.

As we become an even more integral part of Western Sydney and the global community, we continue to focus on changing lives through excellence in research, teaching and scholarship.

We invest heavily in providing new study options, pathway programs and support services to ensure our students have access to a broad range of high-quality undergraduate and postgraduate opportunities.

Your choice of university is an important decision. We believe that success is fuelled by a strong desire and ambition. If you have the drive and determination to succeed, then Western Sydney University offers you an unlimited world of potential.

I look forward to celebrating your future success as a graduate of Western Sydney University.



Professor Barney Glover
Vice-Chancellor



1ST

IN AUSTRALIA
FOR NURSING

4TH

IN THE WORLD
FOR NURSING



79TH

IN THE
WORLD'S TOP
UNIVERSITIES
UNDER 50
YEARS OLD

**TOP
500**

IN THE WORLD



**TOP
400**

IN THE WORLD

22ND

Nursing

TOP 75

Education

TOP 100

Ecology, Civil
Engineering,
Agricultural Sciences,
Hospitality and
Tourism

TOP 200

Psychology

TOP 300

Electrical and
Electronic Engineering



5



TEACHING,
INCLUSIVENESS,
INNOVATION,
FACILITIES

TOP 100

Top 50 under 50 and
Next 50 under 50

TOP 100

Nursing, Sociology

TOP 150

Psychology,
Communication and
Media Studies,
Education and Training

TOP 200

Agriculture and
Forestry, Geography

TOP 250

English Language
and Literature

TOP 300

Arts and Humanities,
Environmental Studies

TOP 350

Medicine, Social
Sciences and
Management





→ LEADERSHIP IN ONE OF AUSTRALIA'S FASTEST GROWING REGIONS

Western Sydney is Australia's third largest and fastest growing economy. It is one of the fastest growing population and employment centres. It is an increasingly important, dynamic and culturally diverse hub of business, industry and innovation. With a large multicultural population of more than two million people from 170 nations, Western Sydney's global links are creating unlimited opportunities for international business, investment, education and cultural exchange.

→ REPUTATION FOR EXCELLENCE

We're ranked among the top two per cent of universities in the world, with a growing international reputation for research-led, student-centred learning.

→ OUR STUDENTS SIT AT THE HEART OF EVERYTHING WE DO

Our student-centred approach offers you the choice of on-campus and flexible study options combined with work-integrated learning. Through work experience placements, internships and volunteering opportunities, you'll get the real-life experience, practical skills and knowledge that you need for your future career.

→ OUR STUDENTS ARE PARTNERS IN LEARNING

Unlike the traditional lecturer-down approach, our pioneering model of co-created learning treats our students as partners in their education. We empower students to share ideas and develop their creativity through a range of degrees.

→ OUR RESEARCH HAS GLOBAL IMPACT

We see learning and research as connected aspects of the student experience, putting you close to world-leading research that is changing lives in the communities we serve.

→ OUR CURRICULUM PREPARES YOU FOR TODAY'S WORLD

We work with our community, business partners and industry leaders to develop course content that meets the needs of employers and the jobs of the future, and which responds to the challenges of a global workplace.

→ WE EMBRACE TECHNOLOGY-ENRICHED LEARNING

From our innovative social learning spaces, online learning environments and use of digital technologies to enhance the study experience to on-campus computer laboratories and state-of-the-art research and clinical facilities, we adopt new and emerging technologies to provide a richer educational experience.

→ WE ARE GLOBALLY FOCUSED AND CONNECTED

With our growing international reach and reputation, we offer the opportunity to travel, learn and work in more than 300 destinations around the world through our Global Mobility, internship and work-placement programs.

→ ADVANCED OPPORTUNITY. UNLIMITED SUCCESS

From advanced degrees and The Academy to The College pathway programs, scholarships, internships and student exchange opportunities, we provide multiple pathways for entry and academic success.

WHY STUDY AT WESTERN SYDNEY?



Dr Sameer Dixit

INTERNATIONAL ALUMNI OF THE YEAR 2017
WESTERN SYDNEY UNIVERSITY
ALUMNI AWARDS

Alumni Success Unlimited

Through our alumni, our graduates become part of a strong network of global citizens who remain connected to and engaged with the University.

Our graduates have gone on to become Oxford and Cambridge scholars, business and community leaders, world-renowned researchers, sporting stars, and well-known personalities in the arts and entertainment industries.

To name a few, they include high-profile Museum Director, Melissa Chiu; Archibald Prize-winning artist, Ben Quilty; Defence Lawyer, Deng Thiak Adut; and Engineering Project Manager at Tesla Motors, Jay Manley.

DR SAMEER DIXIT PHD SCIENCE AND HEALTH, 2005

FOUNDING DIRECTOR OF RESEARCH, CENTRE FOR MOLECULAR DYNAMICS NEPAL

Dr Sameer Dixit's professional field is human health. His speciality is biotechnology and his mission is to discover and design more effective responses to infectious diseases, particularly those that extract a heavy toll on the population of Nepal, Sameer's country of origin. Sameer is literally saving lives – using business savvy, smart science, and a PhD in Probiotics he earned at the Western Sydney University School of Medicine (2005).

The research institute of which Sameer is the Founding Director of Research – the Center for Molecular Dynamics Nepal (CMDN) – is 10 years old in 2017. From ground zero in 2007. CMDN is Nepal's first medical research institute. Such is its success, Nepal is now

carving out a reputation as the region's leading provider of biomedical research and testing, drawing students and researchers from across South Asia.

Sameer is a pioneer, building Nepal's biomedical research capacity from scratch. In this, he has founded an important industry that is becoming something for which Nepal is known in South Asia and internationally. CMDN is now the Nepali Government's 'go to' organisation – the experts it consults for health planning and in emergency settings, such as serious outbreaks of infectious diseases, including those which accompanied the 2015 earthquakes in Nepal that killed almost 9,000 people.

Sameer is now widely recognised as a national leader and authority in biomedical research. Today, in practical terms, it's a role that sees Sameer delivering briefings to government health officials about how best to prepare for a possible Zika outbreak in Nepal, or influencing national health policy with regard to Hepatitis and HIV treatments. The earthquakes of April and May 2015 are a salient example. The earthquakes destroyed infrastructure, including sanitation and water resources. In Kathmandu Valley, they displaced thousands upon thousands of Nepali people. In the camps where they congregated, containing the threat of infectious diseases – especially Cholera – was an urgent priority. In Haiti, the Cholera outbreak that followed its 2010 earthquake killed 750,000 people. Yet in Kathmandu Valley, less than 100 infections were confirmed. With limited access to the Cholera vaccine, the most 'at risk' were prioritised, with obvious success.

WE PREPARE OUR STUDENTS TO GO PLACES AND DO GREAT THINGS.

Parramatta campus



Western Sydney University's new state-of-the-art, \$30 million six-star green star Science, Psychology facility and brand new media and design studios opened in 2017.

Situated on the University's Parramatta South campus, a three-storey facility has been built to meet the world's highest sustainability standards.

The new facility means the University can offer more science programs on campus and, for the first time, gives you the chance to study Medical Science, Psychology, Art Therapy and Social Work at Parramatta.

The new building also provides an opportunity for significant expansion of the University's science and medical science research programs by taking advantage of the new and expanded research laboratories.

One of the University's most important scientific facilities – the Advanced Materials Characterisation Facility (AMCF) – is located in the new building.

Boasting specially designed, purpose-built teaching spaces, the building has the capacity for over 400 students and staff.

Our brand new state of the art screen production studio facilities and edit suites at our Paramatta campus will enable students to have access to the latest cameras and equipment, working with HD technology and software to produce creative work to the highest professional standard.

Studying here means you are gaining valuable, hands-on practical experience from the start, so you can have the best preparation for field placements and future practice.

WORLD

Parramatta City campus



Situated in the heart of the Parramatta CBD.

Our new, world-class, 14-storey Parramatta City campus features:

- creative collaborative learning studios
- well-equipped, quiet and collaborative learning spaces
- fast Wi-Fi, everywhere
- rooms for physical and online meetings, anytime

→ one-stop student support

→ access to business, industry, food and shopping districts

→ close proximity to public transport.

westernsydney.edu.au/parramattacity

CLASS.



Research with impact.

As a research-led institution, Western Sydney University sees learning and research as connected aspects of the student experience.

RESEARCH IMPACT



EXCELLENCE IN RESEARCH (ERA)

ERA is a national evaluation of research quality in Australian universities conducted by the Australian Government and administered by the Australian Research Council (ARC). The ERA initiative is aimed at evaluating excellence in all areas of research within the Australian higher education sector.

It seeks to assess research quality using a combination of indicators and expert review by committees comprising experienced, internationally-recognised experts. Eleven of the University's disciplines were given the highest possible rating of five, denoting the quality of the research as being well above world standard. Eighty percent of the University's Fields of Research were assessed as being at, above or well above world standard.

RESEARCH RATING AND AREAS



Well above world standard

Materials Engineering, Complementary and Alternative Medicine, Applied Mathematics, Ecological Applications, Soil Sciences, Ecology, Plant Biology, Forestry Sciences, Oncology and Carcinogenesis, Pharmacology and Pharmaceutical Sciences, Cultural Studies.



Above world standard

Civil Engineering, Electrical and Electronic Engineering, Nursing, Public Health and Health Services, Psychology, Human Geography, Linguistics, Macromolecular and Materials Chemistry, Microbiology, Historical Studies.



World standard

Specialist Studies in Education, Building, Communication and Media Studies, Mechanical Engineering, Criminology, Other Studies in Human Society, Religion and Religious Studies, Sociology, Literary Studies, Performing Arts and Creative Writing.

ERA
80%

FIELDS OF RESEARCH ASSESSED
AT, ABOVE, OR WELL ABOVE
WORLD STANDARD

Our research doesn't just happen in the lab. We work with regional, national and international partners to deliver research outcomes that contribute to the economic, social and environmental wellbeing of their communities.

URBAN LIVING AND SOCIETY

People, Culture, Economy, and Built Environment

Research within this theme is focused on understanding and guiding change: in the economy, in society, and in culture. Our researchers approach change through the lens of urban living, seeking to understand how the places we live, the work we do, the way we describe ourselves and the bonds we form interrelate. These relationships determine our shared quality of life and physical health, and our research is aimed at ways to improve both.

HEALTH AND WELLBEING

Translation, Service and Innovation

Research within this theme explores how health initiatives can prevent disease and illness, encourage healthy lifestyles in individuals and communities, and reduce the cost and impact of illness. We take an integrated approach to health research. The environments in which we live, the cultural background from which we come, and the work we do all affect our physical and mental health.

EDUCATION

Access, Equity, Pathways and Aspirational Change

Research within our Education and Aspirational Change: access, equity and pathways theme draws on the population diversity of Western Sydney to underpin research that explores educational access on a global scale. This research theme supports individuals and communities in achieving their economic, social and cultural aspirations through education.

ENVIRONMENTAL SUSTAINABILITY

Climate, Agriculture and Resources

Research within our Environmental Sustainability theme is broad, practical and interdisciplinary, and is focused on maintaining and managing the diversity of urban, agricultural and natural systems. The use and production of recycled materials, urban green cover and public health, small business attitudes towards climate change: these are some of the ways in which the University's researchers are engaging with environmental sustainability across disciplinary boundaries.

HAWKESBURY INSTITUTE FOR THE ENVIRONMENT

Hawkesbury campus

Investigating the impact of climate change on native trees and forests.

More information

→ westernsydney.edu.au/hie

INSTITUTE FOR CULTURE AND SOCIETY

Parramatta campus

Research to meet the challenges of our changing social landscape.

More information

→ westernsydney.edu.au/ics

THE MARCS INSTITUTE FOR BRAIN, BEHAVIOUR AND DEVELOPMENT

Bankstown campus

Dedicated to understanding the scientific basis of human communication.

More information

→ westernsydney.edu.au/marcs

AUSTRALIA-CHINA INSTITUTE FOR ARTS AND CULTURE

Parramatta campus

Forging a greater understanding of Chinese culture, relationships with Chinese universities and supporting students studying Chinese language and culture.

More information

→ westernsydney.edu.au/aciac

TRANSLATIONAL HEALTH RESEARCH INSTITUTE

More information

→ westernsydney.edu.au/THRI

THE ACADEMY

Future thinking.
Unlimited possibilities.

The Academy at Western
Sydney University.

Success is not just about getting a degree, but developing the critical thinking and leadership skills to support a successful career.

It's about learning skills for your chosen life, not just a job.

The Academy at Western Sydney University offers advanced degrees that prepare you to thrive in the face of change and seize success at every opportunity. Whether your dream is to achieve as a professional, an entrepreneur or an academic, you will learn to think differently and creatively in whatever you do.

The Academy offers high-achieving students a unique, hands-on approach to learning in an interdisciplinary environment. Led by Associate Professor Jonathon Allen, The Academy draws on the unique experience of leading thinkers, social change agents, community leaders, and high-achieving students both past and present.

With a focus on ethical leadership and critical thinking, built on the pillars of academic rigour, community engagement, and professional and personal development, The Academy offers students access to:

- unprecedented opportunities for industry and real life experience
- world-class research, researchers, teachers, experts and innovation labs
- travel to national and international leadership experiences and conferences
- a range of professional and personal development workshops
- internship, service learning and volunteering opportunities
- personalised career planning
- applied leadership experience in student-led, community-focused projects.

Visit westernsydney.edu.au/theacademy for more information.

* Entry to The Academy is offered to advanced degree students and those with an ATAR of 85 or more or equivalent in higher secondary studies.





John Phillips Library,
Penrith campus

\$10 MILLION IN SCHOLARSHIPS



Western Sydney University has committed over AU\$10 million towards scholarships to support commencing undergraduate and postgraduate international students in 2018.

UNDERGRADUATE SCHOLARSHIPS

Vice-Chancellor's Academic Excellence Undergraduate Scholarships

This scholarship will cover 50% of the annual course tuition fee for up to three years of any undergraduate degree (except Bachelor of Medicine/Bachelor of Surgery). You may be eligible if you achieve a minimum ATAR of 90 or equivalent in higher secondary studies.

Western Sydney International Scholarships – Undergraduate

Eligible students will be offered a one-off contribution of \$10,000, \$5,000 or \$2,000 towards tuition fees for any undergraduate degree (except B Nursing, B Nursing (Advanced) and Bachelor of Medicine/Bachelor of Surgery).

POSTGRADUATE SCHOLARSHIPS

Vice-Chancellor's Academic Excellence Postgraduate Scholarships

This scholarship will cover 50% of the annual course tuition fee for up to two years of any one, one and a half or two year postgraduate coursework degree. You may be eligible if you achieve a minimum GPA of 5.95 on a 7 point scale in your undergraduate degree.

Western Sydney International Scholarships – Postgraduate

Eligible students will be offered a one-off contribution of \$5,000 for any one, one and a half or two year postgraduate coursework degree (excludes higher degree research).

APPLICATION INFORMATION

No application is necessary. You will be automatically considered for a scholarship when you apply to study at Western Sydney University.

For more information on English language or research scholarships, eligibility criteria, terms and conditions, visit westernsydney.edu.au/internationalscholarships

The above scholarships are available at Bankstown, Campbelltown, Hawkesbury, Parramatta, Parramatta City, and Penrith campuses. For more information about scholarships offered at Sydney City campus, please visit westernsydney.edu.au/city/apply/scholarships

FREE DIGITAL TEXTBOOKS

Free textbooks (up to \$800 worth of value) are available to all students enrolling in first-year undergraduate and Diploma subjects in 2018.

The first University to provide free digital textbooks for its students, Western's ground-breaking initiative is one of the world's largest provisions of free textbooks for commencing students.

westernsydney.edu.au/textbooks



Bankstown campus



Parramatta City campus



Parramatta campus



Hawkesbury campus



Campbelltown campus



Penrith campus

CAMPUSES

BANKSTOWN

Located in Milperra, the Bankstown campus provides a warm, friendly, multicultural environment with modern, spacious buildings and landscaped gardens.

Top facilities:

- Early Childhood Centre
- The MARCS Institute for Brain, Behaviour and Development
- Centre for Educational Research (CER)
- Psychology laboratories

CAMPBELLTOWN

The Campbelltown campus, located in the historic Macarthur region of south-west Sydney, offers a unique balance between city and rural lifestyles.

Top facilities:

- Purpose-built School of Medicine
- National Institute for Complementary Medicine (NICM)
- The UniClinic, a state-of-the-art clinical training facility for health science students
- Anatomy laboratories
- Nursing clinical practice unit.

HAWKESBURY

Situated in Richmond in the Hawkesbury River Valley, north-west of Sydney, this stunning location at the foot of the Blue Mountains is an ideal place to study.

Top facilities:

- Food Processing Pilot Plant
- Dedicated Crime Scene House
- Nursing clinical practice unit
- Hawkesbury Institute for the Environment
- Animal Science facilities – including the reptile house and small marsupial house.

NIRIMBA

Nirimba Educational Precinct at Quakers Hill in Western Sydney is home to The College, providing pathway programs and courses to Western Sydney University.

Top facilities:

- Custom-built learning centre
- Tiered and flat-floored lecture theatres
- Well-resourced library
- Outstanding recreation facilities

PARRAMATTA

This campus offers a combination of heritage and contemporary buildings. The campus spans two sites in Rydalmere.

Top facilities:

- Institute for Culture and Society
- Nursing clinical practice unit
- Moot court
- Computing laboratories
- New Science and Psychology building
- New purpose-built production studio, design and creative arts facility
- New Engineering precinct
- Advanced Materials Fabrication and Characterisation Facilities
- New Industrial Design Centre opening in 2018.

PARRAMATTA CITY

State-of-the-art campus located in the heart of the Parramatta CBD at 169 Macquarie Street.

Top facilities:

- Sydney Graduate School of Management
- Four interactive, technology enabled learning studios per level
- More than 120 student PCs available
- Collaborative and quiet study spaces
- Library hub
- Group study rooms with screen sharing and video conferencing
- Free shuttle bus to Parramatta South.

Note: The Parramatta City campus at 100 George Street is home to international students of The College

PENRITH

Located over three sites in Kingswood and Werrington, the Penrith campus is renowned for its state-of-the-art facilities and scenic grounds.

Top facilities:

- Centre for Infrastructure Engineering
- Mechatronics and Robotics facility
- World-class music facilities
- Home of the Solar Car and Formula SAE Racing Car projects
- Advanced Manufacturing and 3D Print Hub

SYDNEY CITY

Located in the heart of the Sydney CBD, this new campus is close to transport, shops, cafes, bars, gyms and more.

Top facilities:

- Brand new, purpose-built high-tech campus
- Small classes and a more personalised learning experience
- Flexible session dates
- Fast-track your degree
- Access to services and facilities at any Western Sydney University campus.

westernsydney.edu.au/city

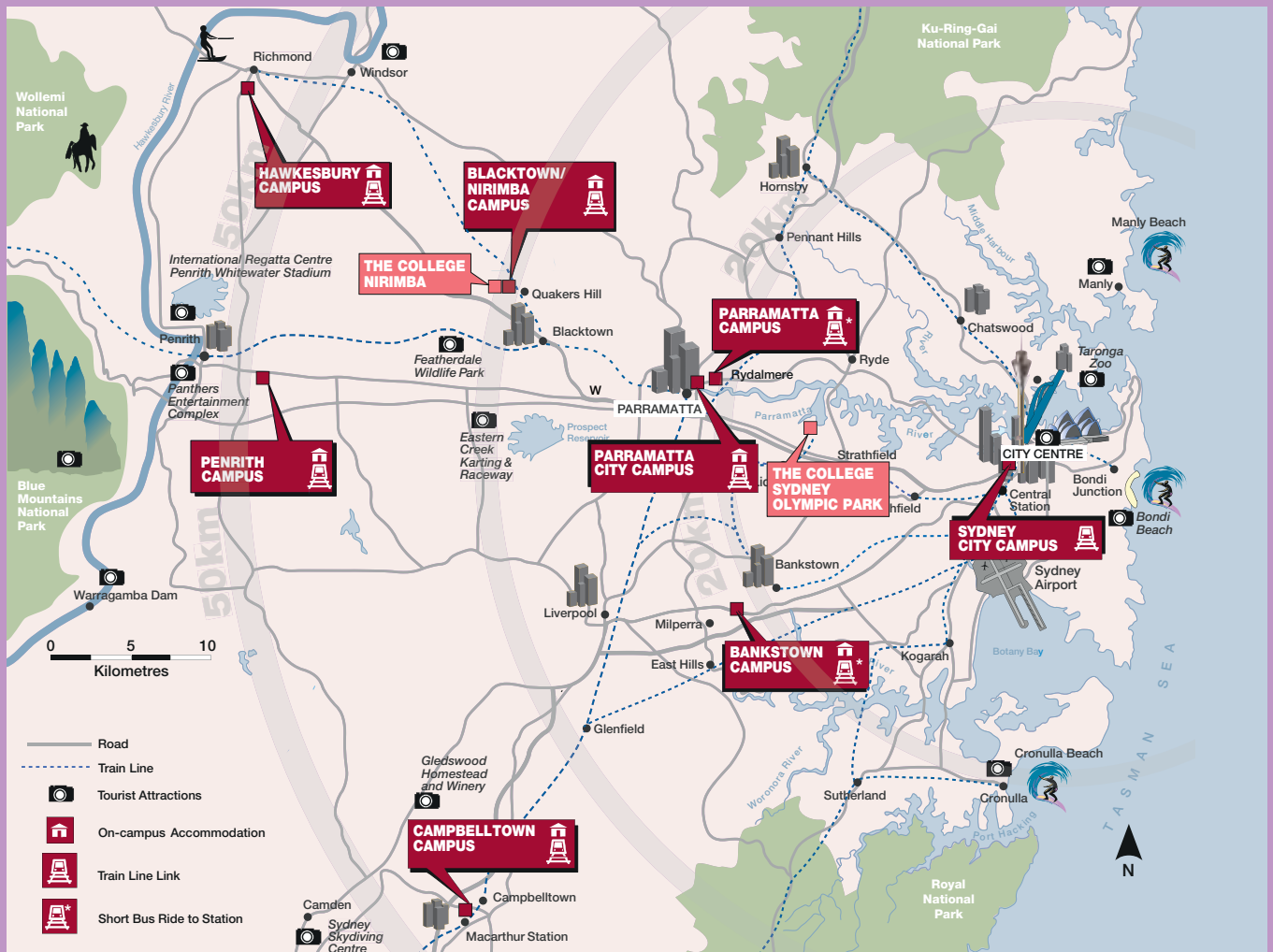
SYDNEY OLYMPIC PARK

The Sydney Olympic Park campus is situated at Level 4, 8 Australia Avenue, Sydney Olympic Park. Home to The College's English Language Programs, the Sydney Olympic Park campus is located just 20 minutes from the Sydney CBD and conveniently located next to Sydney Olympic Park train station.

Top facilities:

- English Language Program
- IELTS Test Centre
- Collaborative learning spaces.

OUR CAMPUSES



TRAVEL OPTIONS

- Public transport – visit transportnsw.info for up-to-date travel information.
- Shuttle buses run regularly between train stations and campuses and the next arrival can be easily tracked on the Western Sydney App, or the Shuttle Tracker web page.
- Bike – on-campus bike parking is available. See westernsydney.edu.au/campus_safety_and_security/security/accessibility_transport_parking/cycling_for_locations
- Drive or car pool – for parking permit fees see westernsydney.edu.au/parking

LIFE ON CAMPUS

One of the best things about life on campus is there's always something happening. From table tennis competitions, outdoor chess, sports and Unigames, to one of many social events organised by the University or Student Clubs, you're bound to find something that's right for you.

All of our Campus Life Officers (CLOs) work tirelessly to ensure there's always something going on at your campus. The CLOs are behind most things that happen on campus including pop-ups, social events, and free breakfasts.

WS ORGSYNC

Stay informed, get involved. Be a part of the online OrgSync Community, find exciting events and take ownership of your student experience.

Discover exciting Campus Life events, Clubs, sports, student representation opportunities and much more. You can even check out where free breakfasts are on campus, browse Clubs you'd like to join or even see the calendar of events and plan your week ahead.

UNIVERSITY SPORT

Western Sydney University is actively involved in providing opportunities for students in all forms of sport. From social lunchtime Quidditch or Dodgeball, to supporting our elite athletes to succeed both on and off the field.

Western Sydney University is the best place to get involved in sport clubs, Elite Athlete Programs, representative sport such as University Games, Inter-varsity tournaments and social sport.

OUT & ABOUT

Western Sydney University has developed a program of activities and adventures open to all students. The Out & About trip list includes one bush walk each month, overnight camps and regular adrenalin experiences.

Being run and coordinated wholly by Campus Life staff means that Out & About trips and adventures are catered directly to the needs and wants of our students. All trip leaders hold a current Senior First Aid certificate, work in pairs and follow strict safety guidelines and detailed risk assessments to make your experience a memorable one for the right reasons.

FOOD

Western Sydney University boasts a number of food outlets on each campus including Subway, Oliver Brown, Jamaica Blue and Piccolo Me. For a full list of food outlet trading hours and locations, visit westernsydney.edu.au/campuses

STUDENT REPRESENTATION AND PARTICIPATION

Western Sydney University student representation aims to invigorate the student body at the University. Student representatives are from a diverse range of backgrounds, cultures and areas of study. Support offered includes strategic advice, financial oversight and facilitation of the student voice. From food prices and parking, to academic teaching quality and student services, to clubs, societies and campus life, the student representatives on your campus will be able to listen and help you experience a better life at university. For more information, visit westernsydney.edu.au/students

GYMS AND FITNESS

Western Sydney University offers gyms and fitness facilities on most campuses. Facilities include large, bright and spacious air conditioned premises. Approachable experienced staff deliver exceptional personal training programs, conduct health tests, offer nutritional guidance and give you appropriate support throughout your fitness and lifestyle journey. Visit gym.westernsydney.edu.au for more information.



STUDENT SUPPORT

At Western Sydney University, we provide a wide range of services to help you achieve academic success. These include advice on careers, employment, learning skills, counselling, religious support and support for students with disabilities.

westernsydney.edu.au/services

AIRPORT PICK-UP

The complimentary airport pick-up service is available to all new international students commencing at the University. Students can arrange to be collected from Sydney airport on arrival and taken to their home campus. Students studying a pathway program (English, Diploma or Foundation Studies) at The College, Western Sydney University will be able to access this service for a fee (please note the fee will depend on the campus drop-off location).

westernsydney.edu.au/airportpickup

INTERNATIONAL ORIENTATION

The International Orientation program runs over two days and is specifically designed for international students. It takes place 10 days before classes commence and all international students are required to attend (check your offer letter for dates). Please make sure you arrive in Australia at least one or two days before the commencement of the Orientation program.

westernsydney.edu.au/international/orientation

STUDENT CENTRAL

This is your first point of contact for information, forms, advice and referrals to other services. You will have direct access to a dedicated Student Enquiry and Information Services International Liaison Officer located at Student Central.

The Student Enquiry and Information Services International Liaison Officer helps international students with enquiries in regards to

student visas, overseas student health cover, enrolment, admission and the provision and lodgement of forms.

westernsydney.edu.au/studentcentral

STUDENT WELFARE

The Student Welfare Service provides welfare support to all international students, including advice on financial assistance, accommodation, health related issues and student advocacy needs. This service has professionally trained staff to help you work through unexpected problems and is available at all campuses.

Welfare officers can provide information and advice about your study options, such as reduced study load or leave of absence on compassionate grounds, and can help find the right services to talk to.

The Student Welfare Service also regularly organises information sessions and workshops for international students.

westernsydney.edu.au/internationalstudentsupport

westernsydney.edu.au/welfareservice

STUDY SUPPORT

The teaching styles you will encounter at Western Sydney University and the study skills required might be very different from what you have been used to in your home country. Western Sydney University offers a range of support programs including Academic Literacy Workshops and other services to help you succeed.

westernsydney.edu.au/internationalstudentsupport

ENGLISH CONVERSATION GROUPS

Improve your English speaking skills and build your confidence by participating in English conversation groups. These groups are run by trained volunteers and will provide an opportunity for participants to practice and improve their spoken English in a friendly and social environment.

westernsydney.edu.au/englishconversation

PEER ASSISTED STUDY SESSIONS (PASS)

Peer Assisted Study Sessions (PASS) is a free and voluntary student-centred learning program offered face to face and online. One hour sessions run weekly throughout the teaching session. In PASS, you will meet and work collaboratively with other students from your unit to understand the unit content and develop study strategies to help improve your academic performance. Sessions are facilitated by senior students who have successfully completed the unit before. They guide students through the course material and facilitate students' learning through planned activities and discussion.

Through actively working together with other students, you will find that you are more engaged and will develop a deeper understanding of the unit content. PASS is an informal and welcoming environment to study, gain a deeper understanding of unit content and meet other students from your course.

PASS sessions run for a large range of units and on multiple campuses.

westernsydney.edu.au/pass

MATES

MATES is a peer-mentoring program for students just starting their university study, or returning to study after some time. New students are matched with students in later years of study. This helps you make friends, network with other students and gain knowledge and skills to settle into life at university.

westernsydney.edu.au/mates
mates@westernsydney.edu.au

CAREERS

Want help finding a part-time job or advice about your future career opportunities? If you need help at any stage of your career planning, whether it is to find a part-time job or help plan what you want to do after university, the Careers Service at Western Sydney University can provide you with a range of resources to help.

westernsydney.edu.au/careers

JOBS ON CAMPUS

Over two-thirds of Western Sydney University students combine study with work. The Western Sydney Careers team aims to coordinate and expand on-campus employment opportunities for all students. Our program assists students to apply for paid professional experience on campus which may help you financially while studying as well as improving your employability skills.

INDUSTRY EXPERIENCE

Industry experience is a great way to gain practical knowledge and improve employability skills. Here at Western Sydney University, we have a recruitment program that is specifically designed to link students with degree-relevant opportunities outside of the University. With the support of our Careers Service, students can access paid roles in various areas such as website design, marketing, chemical testing, stormwater management, database development and social research. We can also assist students to find unpaid work experience relevant to their discipline.

TARGETED PROGRAMS

Our Career-Connect Mentoring and Women in Science and Engineering (WiSE) programs offer online exercises, workshops, visits to employers and mentoring to help students prepare for employment. WiSE is specifically targeted at women studying science, technology, engineering or mathematics, whereas Career-Connect is available to all students across a range of disciplines.

CAREER LAUNCH

Our new Career-Launch project combines a range of guidance and information available online, with a tailored program of activities to step students through their career-planning requirements. By joining Career-Launch, students learn how to plan, seek and gain part-time or graduate employment. The program is accessible to students anytime on their digital devices. Resources include videos, practice tests, news and information to help students navigate the world of graduate careers and build the skills needed to get their dream job.



STUDY IN SYDNEY

A thriving metropolis of almost five million people with a third of its population born overseas, Sydney is one of the most multicultural cities in the world.



Sydney is also the destination of choice for international corporations, business leaders, tourists and students.

BUSINESS

As Australia's business capital, Sydney is where you'll find the head offices of more multinational companies and banks than anywhere else in the country and as a modern, metropolitan city, it's the gateway to the Asia Pacific and an ideal place to do business. Studying in Australia's commercial capital provides students with more job opportunities. It is one of the busiest commercial hubs in the Asia-Pacific region. With a huge variety of attractions, you can explore its many historic sites, museums, parks, retail outlets, restaurants and bars.

FOOD

The people of Sydney, known as "Sydneyiders", trace their collective heritage back to more than 170 countries. The city offers a taste of global cuisine through thousands of cafes and restaurants. Fresh, reasonably-priced, locally-grown produce, meat and seafood is also available year round from grocers and markets.

CULTURE

If you love shopping, you'll find Australian designers and global fashion brands in boutiques, large shopping malls or at street markets across the city. You also won't want to miss the year-round art, music, food, theatre, film and design festivals that put Sydney on the world cultural map.

CLIMATE

Sydney's climate is comfortable and temperate year round; summer is from December to February, while autumn is March to May, winter June to August, and spring September to November. Generally, January and February are warm, while winters are mild.

Average temperature (low-high):



SUMMER: December – February
18–29 degrees Celsius



AUTUMN: March – May
11–24 degrees Celsius



WINTER: June – August
9–17 degrees Celsius



SPRING: September – November
11–24 degrees Celsius



LIVING IN WESTERN SYDNEY

The Greater Western Sydney region is Western Sydney University's home. The region encompasses the area northwest, southwest and west of Sydney and is Australia's third-largest regional economy. With a population of more than two million people from 170 countries, it is a thriving centre of opportunity, diversity and innovation that welcomes international students.

BUSINESS

Many multinational corporations have operations in Western Sydney, including BHP Billiton, Coca-Cola Amatil, Sony, PricewaterhouseCoopers, Deloitte, and Canon, making it a hub of business development. Because of the University's strong ties to local business, industry and community leadership, our students can access many study, internship, work and volunteer opportunities here.

HISTORY

The Greater Western Sydney region was originally inhabited by several Indigenous nations including the Badiagal and Darug people. Radiocarbon dating shows human activity in the area 30,000 years ago. It is also steeped in colonial history – European settlers arrived here just ten months after landing at what is now the Rocks in the heart of Sydney in 1788.

Old Government House in Parramatta was the "country" home of ten NSW governors in the first half-century of European settlement in Australia. The World Heritage listed site in Parramatta Park, built between 1799 and 1816, contains furniture and treasures from the 19th century and is open to the public.

THE OUTDOORS

With nature close at hand, including national parks, abundant parklands, the Parramatta, Nepean and Hawkesbury Rivers, Western Sydney is ideal for outdoor and sports enthusiasts. It's easy to find a place to jog, walk, cycle, row, kayak or swim or enjoy a peaceful picnic, barbecue or a friendly game of cricket, soccer or Frisbee with friends.

The region is also close to the World Heritage-listed Blue Mountains, where you can go bushwalking, canyoning, camping, rock climbing and horse-riding against the dramatic back-drop of rainforests, mountains, valleys and waterfalls.

SPORT, SHOPPING AND FOOD

Western Sydney also boasts some successful football, rugby league, cricket and Australian Football League teams if you want to watch a game or join a community sporting team yourself.

The nearby Sydney Olympic Park at Homebush, site of the 2000 Olympics, offers Aquatic and Archery Centres and cycle tracks open to the public. The Park's ANZ stadium and other venues host national and international football, hockey, basketball and tennis tournaments and athletics events, as well as major contemporary music concerts.

Across Western Sydney, if you are keen on shopping, you'll discover a wide selection of department stores, cinemas, restaurants, cafes, local markets and specialty stores. You can explore major retail centres, including Westfield Parramatta, one of Australia's largest shopping centres. And with the region's rich multicultural population, you'll find the flavours, foods and spices you're accustomed to at home – or why not be adventurous and sample some new cuisines?

CULTURE

Living in Western Sydney, you'll also have the opportunity to take part in festivals, such as Lunar New Year celebrations and other cultural events, including the annual Sydney Festival Parramatta which has a packed program stretching over ten days.

SAFETY IN AUSTRALIA

Australia is a very safe country compared with other parts of the world. When you arrive in Australia you will find the majority of people open and friendly with a tell-it-like-it-is approach to life.

studyinaustralia.gov.au/global/live-in-australia/health-and-safety

WORKING IN AUSTRALIA

As an international student, you may work up to 40 hours per fortnight during each study session (semester) and unlimited hours when your course is not in session.

Permission to work will automatically be included in your student visa. Although you are able to work in Australia, you cannot rely on that income to fund your tuition fees or living costs for the duration of your stay in Australia.

Many international students choose to work part-time during their studies, but it is unrealistic to expect that you will find part-time work as soon as you begin looking for it. You will first need to become familiar with the city and the areas where part-time employment is available. It is also important to understand your study obligations before you commit yourself to part-time work.

studyinaustralia.gov.au/global/live-in-australia/working



Image Credit: Hamilton Lund, Destination NSW
Parramatta Bus interchange - Westfield shopping centre



ACCOMMODATION

ON-CAMPUS ACCOMMODATION

Western Sydney University offers high-quality, fully furnished accommodation options for international students on all campuses. Living on campus offers great opportunities to make friends and experience student life to the fullest.

Western Sydney University Village offers students excellent value for money. Staying on campus means you will save money on transport and have access to free shuttle bus services or you can simply walk to your campus.

FACILITIES

Most Western Sydney Villages include:

- student lounge with communal kitchen
- TV lounge
- computer and study rooms
- BBQ area
- laundry
- free internet for university students
- access to exclusive ResLife program.

TYPES OF ROOMS

There are plenty of options to choose from. Looking to meet new people? Choose a shared townhouse or villa! Room types vary on each campus, but chances are we'll have something for you whether you're looking to live in style or work to a budget.

You can choose from a studio, apartment, villa or townhouse. Accommodation options vary between campuses. The cost of on-campus accommodation depends on the location and the type of room you choose.

Have questions? Give the Village a call on **+61 2 8760 0012** or visit westernsydney.edu.au/village

If you are a Sydney City campus student, find out more information about your accommodation options at: westernsydney.edu.au/city/international/accommodation

SECURITY AND SUPPORT

Western Sydney University Village provides 24-hour support for residents, with a dedicated team of Resident Assistants, an evening duty manager and nightly security patrols.

Rooms and common areas are only accessible by electronic swipe card and all individual bedrooms are lockable.

LIVING OFF CAMPUS

The Western Sydney region has a vast range of affordable apartments and share housing options. A homestay with an Australian family could also be a suitable option. You get to experience Australian culture and it can help you settle in quickly, providing the opportunity to participate in the daily routine of an Australian family and to practice your English language skills.

westernsydney.edu.au/accommodation

UNDER 18 – ACCOMMODATION

All students under 18 years of age are required to live:

- a) with a relative or a legal custodian over 21 years who will be approved by DIBP, or
- b) under an accommodation and welfare arrangement approved by the University.

Where a student chooses option b) above, i.e. a University approved accommodation and welfare arrangement, the University will be responsible for issuing a Confirmation of Appropriate Accommodation and Welfare (CAAW).

Accommodation Arrangements approved by the University

To enable the University to issue a Confirmation of Appropriate Accommodation and Welfare (CAAW), the student must reside with a homestay family arranged by one of Western Sydney University's approved Homestay Providers:

- Global Experience
- Homestay Network

The parent/guardian must provide evidence to the University that they have entered into an accommodation agreement with the homestay provider which sets out the specific accommodation arrangements to be provided to the student for the duration of the agreement, before a CAAW will be issued. The accommodation agreement must begin no later than the commencement date shown on the student's Confirmation of Enrolment, and remain in place for the duration of the student's enrolment plus seven days, or until the student turns 18 years of age, whichever occurs sooner.

westernsydney.edu.au/under_18_admission



Indicative floor plan -
six bedroom apartment



LIVING COSTS

As a student visa holder, you will be required to have approximately AUD\$19,830 per person per year for living expenses, as advised by the Australian Government. However, the actual cost depends on your individual lifestyle and you should budget for approximately \$25,000 per year per adult. Although it is difficult to predict your exact expenses, the cost of living guide below gives you some expected costs plus useful information about general living costs.

Costs indicated are a guide only, the actual cost depends on your individual lifestyle. All prices are quoted in Australian dollars. westernsydney.edu.au/international/livingcosts

Further information on financial requirements can be found at: westernsydney.edu.au/international/fees

LIVING EXPENSES PER YEAR

Applicant \$19,830-\$25,000

Partner \$6,515

First child \$3,720

Second child \$2,790

www.border.gov.au/Trav/Stud/More/Student-Visa-Living-Costs-and-Evidence-of-Funds

SETTLING IN EXPENSES



Airport Transfer \$80-\$150

Based on transport costs from the airport.

\$0 If you are arriving in Australia for the first time, you can be met at the airport as part of the free airport shuttle service arranged by Western Sydney International. The service provides a drop off to your Western Sydney University campus.



Groceries and household items, transport and associated expenses \$300-\$500

To help you set up your home.



Security deposit, rent advance or rental bond \$300-\$900+

On-campus accommodation requires a security deposit (refundable on departure subject to conditions). Rent for your accommodation in advance or a rental bond (a minimum of four weeks rent) is required if you are renting off-campus accommodation.



Bedding, utensils and furnishings \$145-\$800

Varies depending on whether it is provided for you in your accommodation. On-campus accommodation at Western Sydney University is fully furnished, however you will need to purchase your own linen and kitchen utensils. Rental accommodation is mostly unfurnished, you probably need to provide your own bedding. Visit westernsydney.edu.au/village for details.



Warm clothing \$50-\$150

Especially in winter (June to August) if you are coming from a tropical climate.



Textbooks \$600+

You can save money by buying second hand books. Check out campus noticeboards or go to secondhandbooks.westernsydney.edu.au

Free textbooks (up to \$800 worth of value) are available to all students enrolling in first-year undergraduate and Diploma subjects in 2018.

WEEKLY ONGOING EXPENSES



Accommodation \$130-\$450

Cost depends on your 'style' of accommodation on or off-campus.

On-campus accommodation costs can be found at: westernsydney.edu.au/village

Off-campus accommodation: a two bedroom apartment in Parramatta costs about \$350-\$450 per week to rent.

If you are a Sydney City campus student, find out more information about your accommodation options at: westernsydney.edu.au/city/international#accommodation



Electricity, gas, water \$30-\$50

For on-campus accommodation, costs are included. Costs vary for off-campus accommodation depending on share arrangements.



Phone calls \$15-\$200

There are many mobile phone providers and payment options (including prepaid and post-paid plans) available to choose from.

International calling cards (phone cards) to call home are available and are generally a cheaper way to call home.



Food \$60-\$100

Based on home cooked food.



Bus and train fares \$25-\$50+

Depends on how far you live from a Western campus and how often you use public transport. Free shuttle bus service is available to and from campuses to the nearest train station.



Stationery/photocopying \$15

The library has many books and journals available online so this may reduce photocopying costs. You can also purchase stationery at discount department stores.



Personal items, entertainment etc. \$60+

Eating out with friends.



STUDY OPTIONS

FOR UNLIMITED CAREER OPPORTUNITIES

Katharina Koch

GERMANY

MASTERS IN STRATEGIC AND
INTERNATIONAL MANAGEMENT
(DEGGENDORF INSTITUTE OF TECHNOLOGY
IN BAVARIA, GERMANY), MBA (LOGISTICS
AND SUPPLY CHAIN MANAGEMENT) SGSM

“For me, studying overseas was always a dream – so I’m glad I took the chance. I do recommend the Sydney Graduate School of Management (SGSM) as a learning institution. Studying at SGSM has given me a global perspective. It has given me a big-picture overview of how supply chains work in Australia, as well as in Europe. One day I want to work in a management team, so I see the degree as an investment in my future.

The lecturers were from Australia and around the world. Their teaching style balances theory with real-world experience which has helped me to understand how the subject matter translates in practical terms.

I’ve enjoyed the internship at Kimberly-Clark. It has helped me understand how everything fits together, and the variables that can affect delivery. Also, the team was young and dynamic, with people from all over the world. It’s been a great experience.”



RANKINGS

ARTS AND HUMANITIES

IN THE WORLD

TOP 150

Communication and Media Studies*

TOP 250

English Language and Literature*

TOP 300

Arts and Humanities*

BUSINESS

IN THE WORLD

TOP 100

Hospitality and Tourism**

TOP 350

Social Sciences and Management*

TOP 400

Management**

* QS World University Subject Rankings

** ARWU Shanghai Rankings

ARTS AND HUMANITIES

An Arts and Humanities degree has the potential to open career doors to the world. Your degree will be supported by academics that are internationally recognised.

You will find yourself immersed in Cultural and Social Analysis, Creative Writing, Digital Cultures, International Relations and Asian Studies, Languages or Psychological Studies to name just a few major areas of study.

Combine your studies to broaden your horizons with Business, Information Technology, Law, Science or Teaching. The Master of Continental Philosophy offers new ways to think about contemporary issues such as technology, the environment, gender, race and inequality, as well as new approaches to the promises of art, language, and the challenges of history.

The Writing and Society Research Centre offers a challenging, rigorous coursework and research Master of Arts (MA) combining criticism and creative work and leading to an MA in Literature and Creative Writing. By connecting creative writing practice to ideas and creative work from across the arts and sciences, we offer students the opportunity to think across creative, critical and disciplinary categories and to produce either works of scholarship or creative writing (or related creative work that crosses over into other areas including music, art, performance and film).

Career opportunities

Study in the humanities is designed to develop communication and personal skills, creativity and capacity for independent thought, adaptability to new situations, and problem-solving skills. As a graduate, you may find employment as an arts administrator, a teacher (with further study), writer, author, journalist, politician, diplomat, community planner, librarian, historian, publisher or a researcher.

Career opportunities also exist in non-government organisations, community-based industries, overseas organisations and in social policy development. The wide range of double degrees on offer provides scope for further career opportunities.

Find out more

Contact the Course Information Centre on **+61 2 9852 5499** or internationalstudy@westernsydney.edu.au

→ PAGE 50, 61

BUSINESS

If you are driven to succeed in business, here is the right place to start. With a high international profile, expert staff and accreditation from leading Australian industry organisations, our Business degrees ensure you will enter the workforce equipped for success.

The Bachelor of Business degree prepares you for future careers in money, markets and management by offering industry-specific projects and placements.

These courses provide the foundations for the development of our future business leaders.

Whether you've got your eye on the MD's chair, or you're just making your first foray into the business world, the Sydney Graduate School of Management (SGSM) offers a choice of Masters degrees in Business to take you to the next level of business success. You can be confident that you're receiving a top-quality business education.

Career opportunities

As a graduate, you may seek a management traineeship, become involved in a management consultancy or find a career associated with the discipline in which you complete a major. Examples include employment in public practice, taxation consulting, merchant banking, financial services management, economic advising, roles in service-oriented businesses, employment relations, human resources, industrial relations, marketing firms, operations or logistics organisations, international property, property development and valuation firms.

Find out more

Contact the Course Information Centre on **+61 2 9852 5499** or internationalstudy@westernsydney.edu.au

→ PAGE 50, 61-63



Marvis Leung

HONG KONG

BACHELOR OF INFORMATION AND
COMMUNICATIONS TECHNOLOGY

“I aspire to enter the field of machine learning and big data and I believe my degree has shown me the difference between my initial expectations and reality. It has shown me the basic necessity in order to succeed in this field, which otherwise I would have no path on. I received an award for computing after attaining the highest GPA and it really made me feel they acknowledged my efforts pushed into the degree.

I love the atmosphere of the campus, rather relaxed and friendly. The university also facilitates your career needs. The University has multiple campuses located in various parts of Western Sydney allowing for a more flexible arrangement for studies.”



RANKINGS

COMPUTING
IN THE WORLD

TOP
450

Computer Science
and Information
Technology*

* QS World University Subject
Rankings
** ARWU Shanghai Rankings

COMPUTING

Western Sydney University offers specialist Computing degrees to equip you with the skills you need to be career-ready.

If you want to develop advanced programming skills or a thorough technical understanding of modern networked computer systems, or sound skills in the discipline of information systems security, then our Computing degrees are tailor-made for you.

With our professionally recognised degrees in Computing, Information and Communications Technology and Information Systems, you will be able to pursue exciting opportunities in diverse areas of technology development and application to address the global goals and challenges set by humanity.

And if you are a budding entrepreneur in the field of computing, our new Bachelor of Entrepreneurship (Games Design and Simulation) will help you develop the mindset, risk tolerance, creativity, passion, big thinking, team formation and leadership capabilities, needed by high-impact entrepreneurs who want to be game-changers and pursue their ideas all the way to a technology start-up.

Career opportunities

As a graduate, you may find employment in computer security, systems programming, network development, support and management, real-time programming, systems engineering, games and mobile applications development, information systems management, health information management, database and system administration or as a web developer.

Find out more

Contact the Course Information Centre on **+61 2 9852 5499** or internationalstudy@westernsydney.edu.au

→ PAGE 51, 63-64

CONSTRUCTION MANAGEMENT

With our degrees in Construction Technology and Construction Management, you will be able to pursue your aspirations in the rapidly expanding fields of building design and construction management and the development of smart cities.

The programs encourage work experience while studying in order to achieve a mix of theoretical, practical and hands-on knowledge, which is greatly valued in the construction industry.

In addition to receiving high-calibre academic guidance, your study will include practical experiments.

Our Construction Technology degree emphasises applied and practical knowledge of the building sciences that are relevant to general construction.

Career opportunities

As a graduate, you may find employment as a property developer, housing project manager, site supervisor, estimator, building surveyor, design and construction manager, or projects manager.

Find out more

Contact the Course Information Centre on **+61 2 9852 5499** or internationalstudy@westernsydney.edu.au

→ PAGE 51

RANKINGS

CREATIVE INDUSTRIES

IN THE WORLD

TOP 150

Communications and
Media Studies*

* QS World University Subject
Rankings

CREATIVE INDUSTRIES

It's an exciting time to be preparing to enter the creative industries with our recently opened multi-million dollar Music Studio precinct at our Penrith campus and brand new media and design studios on our Parramatta campus.

Recognised and accredited by the key governing bodies, our Creative Industries courses offer opportunities to engage our local community and work on live projects at industry standards.

Career opportunities

The creative industries are growing rapidly in NSW, especially Western Sydney, and encompass careers including advertising, creative writing, design, journalism, media arts production, music and public relations. Through working with our diverse community of partners, your studies will be grounded in dealing with the commercial, ethical, legal, and professional issues in creative practice.

As a graduate, you may find roles in a range of creative industries including journalism, digital and social media communication, design and music. These include advocacy for non-government organisations, corporate and international public sectors, advertising account management and creative direction, TV, media, film and documentary production. You might also seek a career as a professional animator, graphic designer, web designer, professional photographer, illustrator, art director, music performer, composer, teacher, artistic director, concert manager or community musician.

Find out more

Contact the Course Information Centre on **+61 2 9852 5499** or internationalstudy@westernsydney.edu.au

→ PAGE 52, 64

DATA SCIENCE

The Data Science programs at Western provide strong background in machine learning, visualisation and other key analytical techniques for making sense of data in contemporary professional areas.

Our graduates will understand the intricacies of extracting information and knowledge from data, qualities that are highly sought after, whatever the discipline. You will learn powerful data analysis capabilities, a key to global aspirations, like ending poverty.

Data Science degrees can be combined with any Bachelor degree at Western.

Career opportunities

Integrating computing, mathematics and statistics, our Data Science programs open a wide range of career options in commercial and government institutions.

Find out more

Contact the Course Information Centre on **+61 2 9852 5499** or internationalstudy@westernsydney.edu.au

→ PAGE 52, 65



Jay Manley

ENGINEERING PROJECT MANAGER,
TESLA MOTORS
GRADUATED: BACHELOR OF ENGINEERING
(ROBOTICS AND MECHATRONICS)

In 2012, as an undergraduate student in Engineering (Robotics and Mechatronics), Jay Manley led the University's inaugural solar car team in the prestigious World Solar Car Challenge. Starting with just \$500 and the support of two fellow students, Jay grew the team to more than 20 students with a budget of \$300,000 by the time race day came around. That same determination to succeed has taken Jay from Western Sydney to Silicon Valley for a dream job as an Engineering Project Manager for Tesla Motors. Under the leadership of its CEO, Elon Musk, the innovative electric car manufacturer has earned a reputation for its disruptive technologies in the renewable energy industry in the same way Steve Jobs did with the computer industry.

Before joining Tesla, Jay worked as a Project Support Officer in the School of Computing Engineering and Mathematics at Western Sydney University, where he said that leading the University's solar car team provided him with an international network of contacts.

"Working on the solar car team gave me the skills and confidence to chase a career in the world's most competitive market for engineers. I'm grateful for the support and encouragement that the University provided. In putting their faith in me as a student to initiate a challenging project that came with enormous risk, but also the potential to be a great learning opportunity, they made my resume more attractive for the role at Tesla Motors," Jay said.

Watch Jay Manley's story at westernsydney.edu.au/unlimited



RANKINGS

ENGINEERING
IN THE WORLD

TOP
100

Civil Engineering**

TOP
300

Electrical and
Electronic
Engineering**

TOP
400

Environmental Science
and Engineering**

TOP
500

Engineering and
Technology*

* QS World University Subject
Rankings
** ARWU Shanghai Rankings

ENGINEERING

The future presents significant challenges for managing the environment, infrastructure and technological developments.

Finding effective solutions to these challenges requires innovative engineering, applied science and design strategies. Our Engineering programs are at the forefront of Australian education, research and development, and we are preparing our students to take on those challenges and succeed.

Our programs offer a balance of theory and practical field studies, broad unit choices, flexible course structures, extensive industry-based projects and placements, and local and international work-based study and experience opportunities.

With our interconnected degrees in Engineering, ICT and Industrial Design, you will be able to pursue exciting opportunities in diverse areas of technology development and application to address any challenge the future holds.

The Master of Engineering enables professionals and recent graduates to adapt to a dynamic technological environment by upgrading their engineering skills and knowledge.

Career opportunities

As a graduate, you may find employment in civil, construction, electrical, robotic and mechatronic engineering, manufacturing and utilities, commercial, medical and industrial product design, project management and consultancy, industrial, commercial or residential development.

Find out more

Contact the Course Information Centre on **+61 2 9852 5499** or internationalstudy@westernsydney.edu.au

→ PAGE 52, 65

HEALTH AND SPORT SCIENCES

Western Sydney University offers a broad range of innovative programs to prepare graduates for professional careers in health.

The clinical health science programs cover Occupational Therapy, Paramedicine, Podiatry and Traditional Chinese Medicine. Further programs target Health Promotion, Health Services Management, Therapeutic Recreation, Public Health, Sport and Exercise Science, and Health and Physical Education (HPE).

As a graduate, you will have a solid grounding in evidence-based practice and lifelong learning skills which are highly regarded by the health industry. All programs include valuable work experience where you can build professional networks.

The innovative National Institute of Complementary Medicine (NICM) is located at the Campbelltown campus, as is the UniClinic, a therapeutic health practice where treatments are provided by students under the supervision of qualified clinicians.

Career opportunities

Depending on which course you undertake, you may find a career in the public or private sectors, for example in hospitals, ambulance services, the defence force, rehabilitation centres, insurance companies, schools, large corporations, private practices and in government policy units. You may also work with athletes and sporting organisations, or work in a business as a personal trainer.

Find out more

Contact the Course Information Centre on **+61 2 9852 5499** or internationalstudy@westernsydney.edu.au

→ PAGE 53, 65-66

RANKINGS

HEALTH AND
SPORT SCIENCES

IN THE WORLD

TOP
400

Public Health**

INDUSTRIAL DESIGN

Industrial design is a vital part of modern-day living. Every day, we encounter products designed and manufactured with the intention of making our lives easier.

It is industrial designers, incorporating a lateral and cross-disciplinary approach to problem-solving, who create the most useful products.

The primary focus of our Industrial Design and Design and Technology degrees is ensuring that our graduates are industry-ready, able to think strategically and provide innovative product and user experience (UX) solutions in a commercial context.

Practical work experience opportunities, encouraging professional development, are an integral part of our design programs.

Career opportunities

As a graduate, you may find employment as an in-house or consultant industrial designer, in a product development team for areas such as: medical products, furniture, digital wearables, architectural products, building design, sports equipment, smart gadgets or develop new products for an internet of things (IoT) start-up business.

As a graduate of our Design and Technology program, you may work as a product designer or follow a pathway to our Masters of Teaching to become a technological and applied studies teacher in NSW high schools. Here you apply your STEM and Industrial Design skills such as design thinking, graphics, manufacturing or even 3D printing and making in a classroom environment.

Find out more

Contact the Course Information Centre on **+61 2 9852 5499** or internationalstudy@westernsydney.edu.au

→ PAGE 53

LAW

Western Sydney University Law degrees are global in outlook and integrate academic content with professional skill development experiences such as mootings, legal drafting, court advocacy, client advising, alternative dispute resolution role plays (legal negotiation, mediation and arbitration) and clinical legal placements.

Undergraduate Law programs are offered at the Campbelltown and Parramatta campuses. Both offer excellent facilities, including moot courts for practising advocacy skills, a comprehensive library and computer-based law research facilities. In 2018, you will have even more options to combine your studies with another degree and work alongside practising solicitors at the Parramatta Community Justice Clinic.

The Master of Laws (International Governance) enables lawyers to enhance their knowledge and skills on both private and public law issues of corporate governance, with a strong theoretical core and a series of alternate governance units to provide specialist information and skills.

Career opportunities

In our Law programs, special emphasis is placed on professional legal skills. As a graduate, you may find employment in legal practice as a solicitor or barrister, and roles in the banking and finance sector, accounting firms and management consultancies, corporate management, education and publishing, government departments and regulatory authorities, marketing, human resources and telecommunication industries.

Find out more

Contact the Course Information Centre on **+61 2 9852 5499** or internationalstudy@westernsydney.edu.au

→ PAGE 54, 66

** ARWU Shanghai Rankings

RANKINGS

MEDICINE

IN THE WORLD

**TOP
350**

Medicine*

NURSING

IN AUSTRALIA

1ST

Nursing[^]

IN THE WORLD

4TH

Nursing[^]

22

Nursing**

TOP 100

Nursing*

* QS World University Subject Rankings

** ARWU Shanghai Rankings

[^] Centre for World University Rankings (CWUR)

MEDICINE

As a graduate of the Medicine and Surgery degree (MBBS), you'll be more than just highly skilled; you'll be ready for your internship and further specialist training.

Based on a curriculum that is tailored to the Western Sydney context, as well as providing opportunities to experience rural medical practice, the program combines problem-based learning and intensive clinical practice with leading research.

You will learn your skills using state-of-the-art equipment and learning spaces, including a new technologically-enhanced anatomy laboratory and clinical schools located at hospitals and communities in Western Sydney and across NSW.

Graduates are eligible for registration by the Australian Health Practitioner Regulation Agency (AHPRA) and may be able to apply for registration in overseas countries.

Career opportunities

Medical graduates have a huge variety of careers open to them, including medical clinical practice (general or specialist), medical research, teaching or administration, or a combination of these. Most medical graduates undertake further postgraduate vocational training before starting independent practice in their chosen area.

In NSW, internships are administered by the Health Education and Training Institute (HETI) and equivalent organisations in other states and territories.

Find out more

Contact the Course Information Centre on **+61 2 9852 5499** or internationalstudy@westernsydney.edu.au

→ **PAGE 55, 66**

NURSING

Western Sydney University is home to one of Australia's largest modern nursing facilities. Ranked first in Australia, and fourth in the world, our courses are designed with the vision of preparing graduates for work in the future and making a difference to the lives of people, especially those in the Western Sydney region.

All courses are underpinned by a primary health care philosophy supported by a flexible learning approach throughout the course. The curriculum includes high-quality, evidence-based studies, emphasising a balance of theory, clinical practice and interdisciplinary learning to prepare you for work in the nursing and midwifery sectors. We are internationally known for producing nursing graduates who enjoy very high employment rates, particularly in the Western Sydney region.

The Master of Nursing (Professional Studies) provides students with the theoretical knowledge and critical thinking skills to enhance your practice in a contemporary clinical setting.

Career opportunities

As a nursing graduate, you may work in acute care hospitals, aged care services, child and adolescent health, community health, medical practice nursing, disability services, emergency or trauma units, justice health, mental health services, forensics, drug and alcohol, occupational health, oncology, operating theatres, palliative care, rehabilitation services, nursing education and health administration.

Find out more

Contact the Course Information Centre on **+61 2 9852 5499** or internationalstudy@westernsydney.edu.au

→ **PAGE 55, 67**



Nirmal Kunnu

INDIA

BACHELOR OF MEDICAL SCIENCE

“Western Sydney University offers the best cultural experience to international students. On campus, I meet people from different parts of the world coming together and sharing ideas. I am enjoying a fantastic on-campus living experience – as I live with local and international students. I have learnt about many cultures and now have so many close friends from all around the world.

I believe the best experience at Western Sydney University is the interactive learning, and the conversation with professors and the patience that they have; even when I have asked them questions on the same topic multiple times. The staff here are also very friendly and always willing to help you all the time with a smile on their face.”



RANKINGS

PSYCHOLOGY
IN THE WORLD

**TOP
150**

Psychology*

**TOP
200**

Psychology**

RESEARCH STUDIES

**TOP
20**

For research
performance
in Australia

* QS World University Subject
Rankings

** ARWU Shanghai Rankings

PSYCHOLOGY

Led by internationally-recognised psychology academics and practitioners, our Psychology program is ranked in the top 200 in the world.

Western Sydney University's Psychology program combines evidence-based biological, cognitive, neurological, social, developmental and personality theory with statistical expertise and practical experience.

You will be well positioned to pursue a specialisation in your chosen field and make a difference to the lives of others.

Both the Master of Professional Psychology and the Master of Psychology (Clinical Psychology) are accredited by the Australian Psychology Accreditation Council (APAC).

Career opportunities

As a graduate, you may find psychology or research positions in government departments and the private sector, in clinical, industrial and organisational psychology, counselling psychology, vocational psychology, forensic psychology, health psychology and sports psychology.

The program has been designed to prepare Psychology scientists and practitioners. You also have the opportunity to study electives from other disciplines, including Applied Leadership and Critical Thinking, Data Science, Law, and Social Sciences. These will provide you with more career opportunities in today's ever-changing world.

Find out more

Contact the Course Information Centre on **+61 2 9852 5499** or internationalstudy@westernsydney.edu.au

→ **PAGE 57, 68**

RESEARCH STUDIES

The Master of Research aligns with degrees from around the world ensuring you will have an internationally recognised qualification that makes you competitive in your educational and career aspirations.

The program will deliver an in-depth research training experience that combines specialist disciplinary knowledge, an advanced understanding of research methodologies, and a year of independent research conducted under expert supervision.

The course will give you an internationally recognised qualification, the opportunity to work with leading researchers, the capacity to achieve in a research environment and advanced research training skills and knowledge.

Career opportunities

The Master of Research is a customised research pathway to PhD study. It provides an optimal research training framework to equip you for future research pathways. It develops graduates' innovative analytical, research and communication skills, making you highly competitive for global careers in:

- industry and business (research assistant, consumer and social research, public relations, publishing, personnel work, training, marketing, human resources)
- community and non-profit organisations (administration, overseas aid and development agencies, social research, policy development, lobbying)
- government (policy development and analysis, general administration, social research)
- PhD study, research assistant work, university teaching. After completion of your PhD, you will be able to pursue postdoctoral or lectureship positions.

Find out more

Contact the Course Information Centre on **+61 2 4736 0665** or grs.mres@westernsydney.edu.au

→ **PAGE 67**

RANKINGS

SCIENCES

IN THE WORLD

TOP 100

Agricultural Sciences,
Ecology**

TOP 200

Agriculture and
Forestry, Geography*

TOP 300

Environmental Studies*

SOCIAL SCIENCES

IN THE WORLD

TOP 100

Sociology*

* QS World University Subject
Rankings

** ARWU Shanghai Rankings

SCIENCES

Stunning facilities, inspirational teaching and professional recognition await those undertaking our Science degrees.

The Science facilities span three campuses (Campbelltown, Hawkesbury and Parramatta) and include Anatomical, Biological and Chemical facilities, Nuclear Magnetic Resonance, the Mass Spectroscopy Lab and Confocal Bio-Imaging Facility. For those students whose work involves animals, there is the Australian Freshwater Turtle Research Facility, as well as the Mammal and Reptile House.

Hawkesbury campus is also home to a dedicated Crime Scene House used by students of the Bachelor of Science (Forensic Science) and the Hawkesbury Institute for the Environment. A food pilot plant and modern industrial kitchens support students in Food and Nutrition courses.

New Science laboratories opened at the Parramatta campus in 2016.

The Master of Science (new in 2018)[#] is an advanced course offering two specialisations: Public Health Nutrition or Food Science. On completion of the course graduates with the Food Science Specialisation will be eligible for professional membership of the Australian Institute of Food Science and Technology.

Career opportunities

Depending on the major and electives chosen, your career opportunities include roles in government, research, forensics, patents, quality control, universities, product development, environmental analysis, scientific instrumentation, medical laboratories and technical management. You will also have the option of becoming a secondary school science or mathematics teacher or you might pursue a high-level research career by a Master of Research.

Find out more

Contact the Course Information Centre on **+61 2 9852 5499** or internationalstudy@westernsydney.edu.au

→ **PAGE 55-56, 67**

CRICOS registration is pending.

SOCIAL SCIENCES

With a Social Sciences degree, you can positively influence the lives of people, both in Australia and around the world.

Our Social Sciences degrees aim to expand your knowledge of the social world through theory and research, providing a deep understanding of the complex, culturally diverse and dynamic social environment of the 21st century.

All the specialisations within the Social Sciences degree focus on what makes people in our societies and cultures tick.

Our Social Science programs also include Cyber Security and Behaviour, Social Work, Criminology, Community Welfare, Policing, Psychology, and Tourism and Urban Planning.

If success is defined by making a difference, these degrees should be in your sights.

Career opportunities

As a graduate, you may find a career in development and peacekeeping agencies, international aid, police work, investigative and intelligence agencies, organisations undertaking policy development, analysis and social research, social and community planning organisations, heritage and tourism organisations and centres, welfare and community development agencies.

Find out more

Contact the Course Information Centre on **+61 2 9852 5499** or internationalstudy@westernsydney.edu.au

→ **PAGE 56-57, 68**

RANKINGS

TEACHING AND
EDUCATION

IN THE WORLD

75

Education**

TOP
150Education
and Training** QS World University Subject
Rankings

** ARWU Shanghai Rankings

TEACHING AND
EDUCATION

Western Sydney University's initial teacher education courses are designed so you graduate work-ready – with a strong balance of theory and practical skills to help you adapt to new challenges and complexities as they arise.

The practical experience you will gain in our teaching programs will also give you the confidence to succeed from your first day of teaching. Teacher education at Western is only for those who want to make a difference in the lives of children and young people.

Career opportunities

As a graduate, you can work as a teacher in an early childhood centre, a government or non-government school or college relevant to the postgraduate qualification and the majors chosen in the undergraduate degree.

This includes roles as an early childhood teacher, primary school teacher (K-6), secondary school teacher, an education field officer in a variety of industries, including sport, welfare, community education, and also in training and development facilities in industry.

Find out more

Contact the Course Information Centre on **+61 2 9852 5499** or internationalstudy@westernsydney.edu.au

→ PAGE 57, 69

TESOL,
INTERPRETING
AND
TRANSLATION

Western Sydney University's reputation for excellence in training interpreters and translators spans more than thirty years, with over 600 graduates since 1985. Many of our students who study Interpreting and Translation gain NAATI accreditation.

Our teachers are leading researchers in their field. They are also professional interpreters and translators with real-world insights. You will be challenged as you experience the latest technology in interpreting and translation using state-of-the-art language laboratories and conference interpreting equipment.

The Master of Arts (TESOL) equips you with an internationally valued skill set, enabling you to communicate and exchange ideas with people of diverse cultural and linguistic backgrounds, and to learn more about other cultures and languages.

Career opportunities

Interpreting and Translation courses allow students to work in Australia as a professional interpreter and translator in a wide range of settings in both government and private sectors. Other opportunities might include pursuing further studies towards a PhD, developing a teaching career in interpreting and translation or establishment of a small business as an interpreter and translator.

Find out more

Contact the Course Information Centre on **+61 2 9852 5499** or internationalstudy@westernsydney.edu.au

→ PAGE 58, 69-70

Lucía Iannantuono

ARGENTINA

BACHELOR OF INTERPRETING AND
TRANSLATION (EXCHANGE)

“My objective is to become a Literary Translator from Spanish to English and vice versa. A degree in this profession is crucial in order to be accredited to work. My study experience at Western Sydney University has enabled me to learn about the different approaches to Translation and where the Translation industry stands from a more global perspective.

I chose Australia because it seemed like the best combination of study and social life. There are so many opportunities to meet people on campus, but also outside the University. Moreover, it is very easy to explore not just Sydney, but also the country in general. I took advantage of my study breaks to have a first-hand experience of the Australian laidback lifestyle in different regions.

Everyone in Sydney is friendly and welcoming, Australia felt like a second home from the very beginning and that is very important for an international student.”



RANKINGS

TOURISM AND URBAN PLANNING

IN THE WORLD

TOP 100

Hospitality
and Tourism**

TOP 200

Geography*

* QS World University Subject
Rankings

** ARWU Shanghai Rankings

THERAPEUTIC STUDIES AND COUNSELLING

**Therapeutic Studies and
Counselling are areas that are
growing steadily.**

At Western Sydney University, these areas are approached in a variety of ways. Our students are given theoretical and practical guidance to prepare them for their careers.

The Master of Social Work (Qualifying) is aimed at graduates of Social Sciences and other human services programs who wish to achieve a professional qualification in social work.

The Master of Psychotherapy and Counselling course focuses on the process of creating a therapeutic environment for clients and on cultivating the high levels of skill, sensitivity, self-knowledge and ethical conduct required of the counselling and psychotherapy professional.

As well as offering counselling courses, Western Sydney University offers the Master of Art Therapy to prepare students who wish to use their creativity for therapeutic purposes. This includes the use of music, visual arts and other artistic mediums.

Career opportunities

The Master of Psychotherapy and Counselling is a cross-disciplinary pathway into a career in helping people in distress. In counselling and psychotherapy, clients gain self-understanding, expand interpersonal capacities and become more able to change through a dedicated helping relationship.

The Master of Social Work (Qualifying) combines the academic rigour, including research training, with the practice education required to meet Australian Association of Social Workers (AASW) standards.

If you're interested in a career as an art therapist, you will utilise a variety of visual art mediums to assist people that are emotionally distressed to overcome mental difficulty. Art therapists are required in fields of: health, government and community organisations.

Find out more

Contact the Course Information
Centre on **+61 2 9852 5499** or
internationalstudy@westernsydney.edu.au

→ **PAGE 70**

TOURISM AND URBAN PLANNING

**The Tourism and Urban Planning
programs at Western Sydney
University are among Australia's
finest.**

These courses offer a balance of theory and practical field studies, broad subject choices, flexible course structures, industry-based projects and placements, and local and international work experience opportunities.

The Master of Planning degree has been designed to equip students with professional and town planning practice as well as policy development.

Career opportunities

If you are interested in a career in urban, social or cultural planning, the Bachelor of Planning pathway to the Master of Urban Management and Planning is for you. This course equips students to take leadership roles in urban management, strategic planning and policy development.

As a graduate of Tourism Management, you may seek to build a career in festival and event management and programming; leisure and tourism policy development; tour operations; destination marketing; visitor attractions management; outdoor recreation; hospitality provision; cultural, tourism and leisure industry development; state and federal government departments concerned with urban and regional affairs; or planning consultancies.

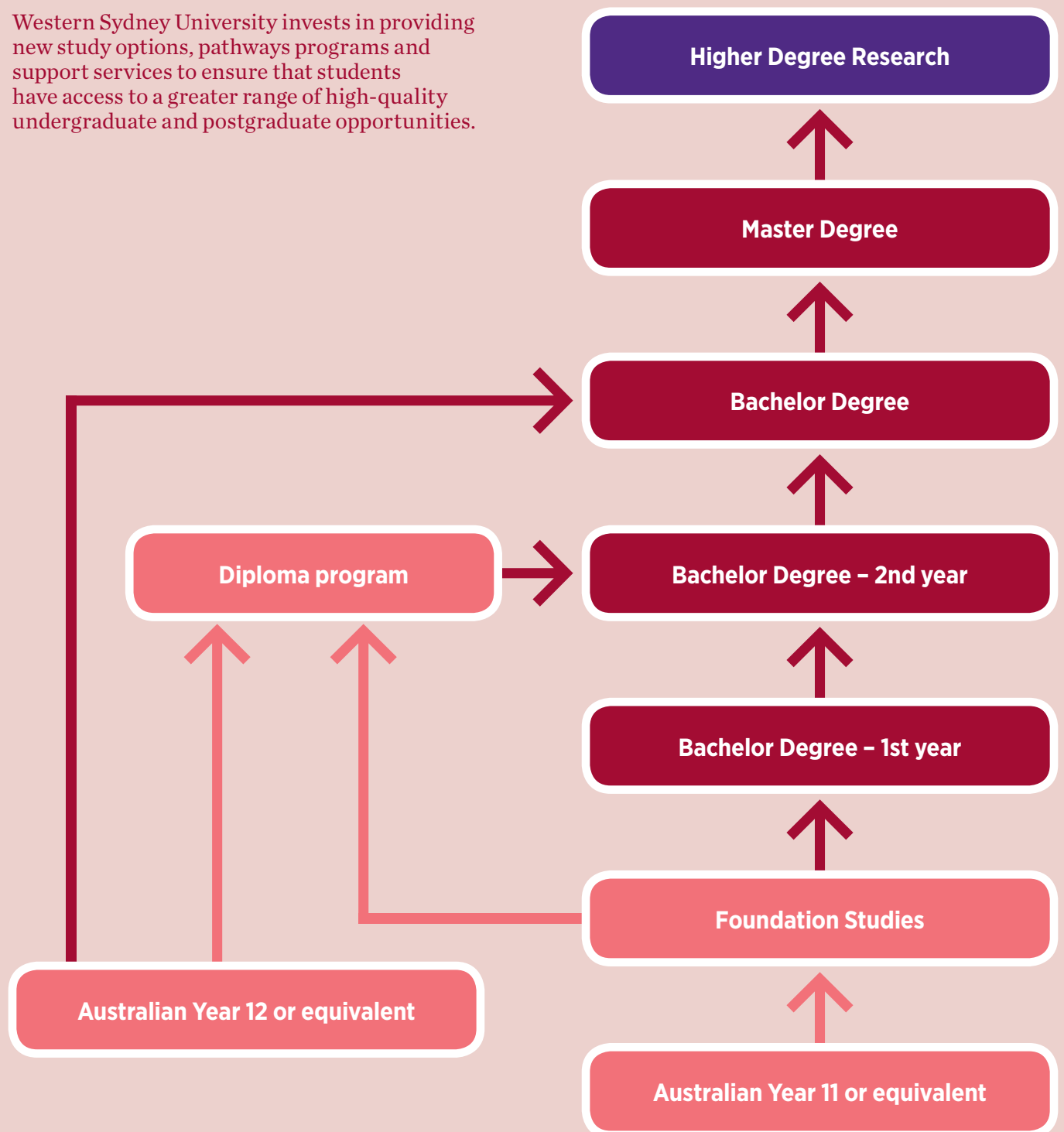
Find out more

Contact the Course Information
Centre on **+61 2 9852 5499** or
internationalstudy@westernsydney.edu.au

→ **PAGE 58, 71**

PATHWAYS TO WESTERN SYDNEY UNIVERSITY

Western Sydney University invests in providing new study options, pathways programs and support services to ensure that students have access to a greater range of high-quality undergraduate and postgraduate opportunities.





UNLIMITED DEGREES

Western Sydney University
has one of the most
comprehensive ranges of
courses in Australia.

UNDERGRADUATE

POSTGRADUATE

RESEARCH

PATHWAY PROGRAMS

UNDERGRADUATE

Arts and Humanities

COURSE NAME	COURSE CRICOS CODE	DURATION INTAKE	2018 ANNUAL INDICATIVE AUD\$ TUITION FEES*	CAMPUS
Bachelor of Arts	1706 040992A	3 years Mar/July	\$23,800	Bankstown Parramatta Penrith
Majors*: Anthropology, Arabic, Chinese, Cultural and Social Analysis, Creative Writing, Criminology and Criminal Justice, Economy and Markets, English, Geography and Urban Studies, Global Business, Heritage and Tourism, History and Political Thought, Indigenous Australian Studies, Innovation and Change, Indonesian, International English, International Relations and Asian Studies, Islamic Studies, Japanese, Linguistics, Musicology, Music Performance, Organisations and Work, Peace and Development Studies, Sociology, Philosophy, or Psychological Studies				
Professional Recognition/Accreditation: The Bachelor of Arts Psychology Key Program is accredited by the Australian Psychology Accreditation Council (APAC). A Psychological Studies major/sub-major does not meet APAC requirements for an accredited sequence in Psychology.				
Bachelor of Arts (Interpreting and Translation)	1519 041109C	3 years Mar/July	\$25,480	Bankstown
Professional Recognition/Accreditation: This course is approved by the National Accreditation Authority for Translators and Interpreters (NAATI) at the Professional Level (formerly Level 3). Eligibility for accreditation is triggered by the final examinations in the unit Accreditation Studies (UG), in which students are required to pass (see note below) in at least one mode (i.e. Translation into English, Translation from English, Interpreting). These examinations adhere to NAATI requirements. Note: NAATI requires a minimum pass mark of 70%.				
Bachelor of International Studies	1658 064562C	3 years Mar/July	\$23,800	Bankstown Parramatta
Majors*: International Relations and Asian Studies, Arabic.				
Professional Recognition/Accreditation: Graduates from this program are eligible to apply to the Legal Profession Admission Board for admission to legal practice in NSW after undertaking prescribed practical legal training.				
Bachelor of Language and Linguistics	1810 088188M	3 years Mar/July	\$23,800	Bankstown

See also Teaching and Education section for B Arts pathway to teaching programs.

Business

COURSE NAME	COURSE CRICOS CODE	DURATION INTAKE	2018 ANNUAL INDICATIVE AUD\$ TUITION FEES*	CAMPUS
Bachelor of Accounting	2783 087773B	3 years Mar/July	\$25,480	Bankstown Campbelltown Parramatta Sydney City**
Professional Recognition/Accreditation: This course is accredited with, and satisfies, the pre-admission educational requirements for membership of CPA Australia (CPA), Chartered Accountants Australia and New Zealand (CA ANZ) and the Institute of Public Accountants (IPA). In addition, by completing available majors within the program, students are expected to be eligible to apply for membership of the Financial Planning Association (FPA) and to be considered for registration with the Tax Practitioners Board as a registered tax agent (application for recognition by these professional bodies is in progress).				
Bachelor of Business	2786 089205G	3 years Mar/July	\$25,480	Bankstown Campbelltown Parramatta City Sydney City**
Majors*: Accounting, Applied Finance, Economics, Hospitality Management, Human Resource Management, International Business, Management, Marketing, Sport Management and Property.				
Professional Recognition/Accreditation: Accounting major is accredited with CPA Australia (CPA), The Institute of Chartered Accountants in Australia (ICAA) and the Institute of Public Accountants (IPA). Applied Finance major is accredited with the Financial Services Institute of Australasia (Finsia). Human Resource Management major is accredited with the Australian Human Resources Institute (AHRI). Marketing major satisfies the educational requirements for recognition as a Certified Practising Marketer and eligibility for membership of the Australian Marketing Institute (AMI) and the Australian Market and Social Research Society (AMSRS). Property major is accredited by the Australian Property Institute (API) for Associate Membership and Certified Practising Valuer (CPV), Certified Property Practitioner (CPP), Certified Property Manager (CPM), Certified Asset Manager (CAM) and Certified Development Practitioner (CDP) certification.				
Bachelor of Business (Advanced Business Leadership)	2787 089206F	3 years Mar/July	\$25,480	Parramatta City

Professional Recognition/Accreditation: Refer to B Business for details.

Computing

COURSE NAME	COURSE CRICOS CODE	DURATION INTAKE	2018 ANNUAL INDICATIVE AUD\$ TUITION FEES*	CAMPUS
Bachelor of Computer Science	3506 041105G	3 years Mar/July	\$27,960	Penrith
Majors*: Networked Systems, Systems Programming, Cyber Security.				
Professional Recognition/Accreditation: This course is currently accredited with the Australian Computer Society (ACS) at Professional level.				
Bachelor of Computer Science (Advanced)	3634 061245G	3 years Mar	\$27,960	Penrith
Professional Recognition/Accreditation: This course is currently accredited with the Australian Computer Society (ACS) at Professional level.				
Bachelor of Data Science	3734 089203J	4 years Mar	\$27,960	Parramatta
The Bachelor of Data Science is not a stand-alone degree, but is designed to be undertaken in combination with any Bachelor degree. Students must have completed all requirements for another Bachelor degree in order to graduate with the Bachelor of Data Science.				
Bachelor of Information Systems	3687 079492M	3 years Mar/July	\$27,960	Parramatta Sydney City**
Majors*: Big Data, Entertainment Computing, Health Informatics, Mathematics, Mobile Computing, Networking.				
Professional Recognition/Accreditation: This course is accredited with the Australian Computer Society (ACS) at Professional level.				
Bachelor of Information Systems (Advanced)	3688 079493K	3 years Mar/July	\$27,960	Parramatta
Professional Recognition/Accreditation: This course is accredited with the Australian Computer Society (ACS) at Professional level.				
Bachelor of Information and Communications Technology	3639 064013K	3 years Mar/July	\$27,960	Campbelltown Parramatta Penrith Sydney City**
Majors*: Entertainment Computing, Health Informatics, Mathematics, Mobile Computing, Networking.				
Professional Recognition/Accreditation: This course is accredited with the Australian Computer Society (ACS) at Professional level.				
Bachelor of Information and Communications Technology	3684 077827J	3 years Mar/July	\$27,960	Campbelltown Penrith
Professional Recognition/Accreditation: This course is accredited with the Australian Computer Society (ACS) at Professional level.				
Bachelor of Information and Communications Technology (Health Information Management)	3711 088187A	3 years Mar	\$27,960	Campbelltown Parramatta Penrith
The Bachelor of Information and Communications Technology (Health Information Management) is accredited with the Australian Computer Society (ACS) at Professional level.				

Construction Management

COURSE NAME	COURSE CRICOS CODE	DURATION INTAKE	2018 ANNUAL INDICATIVE AUD\$ TUITION FEES*	CAMPUS
Bachelor of Building Design Management	3727 088711G	4 years Mar/July	\$29,960	Parramatta Penrith
Bachelor of Construction Management	2607 049425D	4 years Mar	\$29,960	Parramatta Penrith
Professional Recognition/Accreditation: This course is accredited with the Australian Institute of Building. Graduates are eligible for Probationary membership with advancement to Associate membership of the Australian Institute of Quantity Surveyors (AIQS) after Assessment of Professional Competence.				
Bachelor of Construction Management Studies	3697 084735K	3 years Exit only	\$29,960	Penrith
Bachelor of Construction Technology	3692 085663B	3 years Mar	\$29,960	Penrith

* Specialisation/Majors vary from campus to campus. Please check the online handbook for campus locations of each specialisation or major.

** Sydney City campus undergraduate courses offer intakes in February, June and October. For course major/specialisations, campus facilities and information about how to apply to Sydney City campus, visit westernsydney.edu.au/city

+ Indicative 2018 tuition fee shown in Australian dollars. For further information about course credit points and unit fees, please refer to the international student tuition fees schedule at westernsydney.edu.au/international/fees

UNDERGRADUATE

Creative Industries

COURSE NAME	COURSE CRICOS CODE	DURATION INTAKE	2018 ANNUAL INDICATIVE AUD\$ TUITION FEES*	CAMPUS
Bachelor of Communication	1696 074452D	3 years Mar/July	\$25,480	Parramatta Penrith Sydney City**
Majors*: Advertising, Journalism, Media Arts Production and Public Relations.				
Professional Recognition/Accreditation: This course is accredited by professional organisations including the Public Relations Institute of Australia (PRIA) and the Media Foundation of Australia (MFA).				
Bachelor of Creative Industries	1838 093321B	3 years Mar/July	\$25,480	Parramatta
Bachelor of Design (Visual Communication)	1571 044773B	4 years Mar	\$25,480	Parramatta
Professional Recognition/Accreditation: Graduates are eligible for membership of the Design Institute of Australia (DIA) and the Australian Graphic Design Association (AGDA).				
Bachelor of Design Studies	1624 095776K	3 years Exit only	\$25,480	Parramatta
Bachelor of Music	1659 065052F	3 years Mar	\$25,480	Penrith
Bachelor of Screen Media (Arts and Production)	1791 089386G	3 years Mar	\$25,480	Parramatta

Data Science

COURSE NAME	COURSE CRICOS CODE	DURATION INTAKE	2018 ANNUAL INDICATIVE AUD\$ TUITION FEES*	CAMPUS
Bachelor of Data Science	3734 089203J	4 years Mar	\$27,960	Parramatta

The Bachelor of Data Science is not a stand-alone degree, but is designed to be undertaken in combination with any Bachelor degree. Students must have completed all requirements for another Bachelor degree in order to graduate with the Bachelor of Data Science.

Engineering

COURSE NAME	COURSE CRICOS CODE	DURATION INTAKE	2018 ANNUAL INDICATIVE AUD\$ TUITION FEES*	CAMPUS
Bachelor of Engineering (Honours)	3740 089429B	4 years Mar/July	\$29,960	Parramatta Penrith Sydney City**
Majors*: Civil, Construction, Electrical, Mechanical, Robotics and Mechatronics.				
Professional Recognition/Accreditation: Graduates of this program are eligible to apply for full membership of Engineers Australia. You are eligible to apply for Chartered Professional Engineering registration upon successful completion of the required engineering practice period specified by Engineers Australia.				
Bachelor of Engineering Advanced (Honours)	3690 063560B	4 years Mar/July	\$29,960	Penrith
Majors*: Civil, Construction, Electrical, Mechanical, Robotic and Mechatronics.				
Professional Recognition/Accreditation: Graduates of this program are eligible to apply for full membership of Engineers Australia. You are eligible to apply for Chartered Professional Engineering registration upon successful completion of the required engineering practice period specified by Engineers Australia.				
Bachelor of Engineering Science	3691 074195E	3 years Mar/July	\$29,960	Parramatta Penrith Sydney City**

Majors*: Civil, Construction, Electrical, Mechanical, Robotic and Mechatronics.

Health and Sport Sciences

COURSE NAME	COURSE CRICOS CODE	DURATION INTAKE	2018 ANNUAL INDICATIVE AUD\$ TUITION FEES*	CAMPUS
Bachelor of Health Science	4656 044779G	3 years Mar/July	\$24,280	Campbelltown Sydney City**
Majors*: Health Promotion, Health Services Management, Therapeutic Recreation or Public Health.				
Professional Recognition/Accreditation: The Bachelor of Health Science (Health Service Management) has Professional Accreditation with the Australasian College of Health Service Management (ACHSM). The Bachelor of Health Science (Therapeutic Recreation) has been granted accreditation from Diversional Therapy Australia (DTA).				
Bachelor of Health Science (Paramedicine)	4669 079923D	3 years Mar	\$29,360	Campbelltown
Professional Recognition/Accreditation: This course has been granted preliminary approval for accreditation from the Council of Ambulance Authorities.				
Bachelor of Health Science (Health and Physical Education)	4747 089200A	3 years Mar/July	\$24,280	Penrith
Professional Recognition/Accreditation: Graduates may be eligible to apply for accreditation with the NSW Institute of Teachers following the successful completion of a recognised teaching qualification. There is no professional accrediting body for the PDHPE specialisation.				
Bachelor of Health Science (Sport and Exercise Science)	4658 069280F	3 years Mar	\$26,000	Campbelltown
Professional Recognition/Accreditation: This course is accredited at the level of exercise science by the National University Course Accreditation program of Exercise and Sports Science Australia (ESSA). Graduates are eligible for exercise science accreditation.				
Bachelor of Occupational Therapy	4711 086212K	4 years Mar	\$27,640	Campbelltown
Professional Recognition/Accreditation: This course is an accredited program of study and students are eligible to register with the Australian Health Practitioner Regulation Agency.				
Bachelor of Podiatric Medicine	4708 086123M	4 years Mar	\$27,640	Campbelltown
Bachelor of Traditional Chinese Medicine	4710 089195D	4 years Mar	\$27,640	Campbelltown
Bachelor of Sport Development	4741 Pending#	3 years Mar	\$24,280	Parramatta
Bachelor of Health Science (Health and Physical Education) – Pathway to Teaching (Secondary)	4742 089200A	3 Years Mar/July	\$24,760	Penrith

Industrial Design

COURSE NAME	COURSE CRICOS CODE	DURATION INTAKE	2018 ANNUAL INDICATIVE AUD\$ TUITION FEES*	CAMPUS
Bachelor of Industrial Design	3730 041035E	4 years Mar/July	\$29,960	Parramatta
Professional Recognition/Accreditation: Graduates are eligible for membership of the Design Institute of Australia (DIA).				
Bachelor of Industrial Design (Honours)	3731 041035E	4 years Mar/July	\$29,960	Parramatta
Professional Recognition/Accreditation: Graduates are eligible for membership of the Design Institute of Australia (DIA).				
Bachelor of Design and Technology	3729 041034F	3 years Mar/July	\$29,960	Parramatta
Professional Recognition/Accreditation: Graduates are eligible for membership of the Design Institute of Australia (DIA).				

* Specialisation/Majors vary from campus to campus. Please check the online handbook for campus locations of each specialisation or major.

** Sydney City campus undergraduate courses offer intakes in February, June and October. For course major/specialisations, campus facilities and information about how to apply to Sydney City campus, visit westernsydney.edu.au/city

+ Indicative 2018 tuition fee shown in Australian dollars. For further information about course credit points and unit fees, please refer to the international student tuition fees schedule at westernsydney.edu.au/international/fees

Courses pending CRICOS codes are not open for application. Please contact us if you require more information.

UNDERGRADUATE

Law

COURSE NAME	COURSE CRICOS CODE	DURATION INTAKE	2018 ANNUAL INDICATIVE AUD\$ TUITION FEES*	CAMPUS
Bachelor of Laws (Graduate Entry)	2501 041111J	3 years Mar	\$27,120	Campbelltown Parramatta
Professional Recognition/Accreditation: Graduates from this program are eligible to apply to the Legal Profession Admission Board for admission to legal practice in NSW after undertaking prescribed practical legal training.				
Bachelor of Laws (Non Graduate Entry)	2502 041112G	4 years Mar	\$27,120	Campbelltown Parramatta
Professional Recognition/Accreditation: Graduates from this course are eligible to apply to the Legal Profession Admission Board for admission to legal practice in NSW after undertaking prescribed practical legal training.				
Bachelor of Accounting/Bachelor of Laws	2785 089438A	5 years Mar/July	\$27,120	Campbelltown Parramatta
Bachelor of Arts/Bachelor of Laws	2537 041113G	5 years Mar/July	\$27,120	Campbelltown Parramatta
Professional Recognition/Accreditation: Graduates from this course are eligible to apply to the Legal Profession Admission Board for admission to legal practice in NSW after undertaking prescribed practical legal training.				
Bachelor of Business/Bachelor of Laws	2788 089215E	5 years Mar/July	\$27,120	Campbelltown Parramatta
Professional Recognition/Accreditation: Refer to Bachelor of Business and Bachelor of Laws for details.				
Bachelor of Business (Advanced Business Leadership)/Bachelor of Laws	2789 089216D	5 years Mar/July	\$27,120	Parramatta
Professional Recognition/Accreditation: Refer to Bachelor of Business and Bachelor of Laws for details.				
Bachelor of Communication/Bachelor of Laws	2752 054282E	5 years Mar/July	\$27,120	Parramatta
Professional Recognition/Accreditation: Refer to Bachelor of Communication and Bachelor of Laws for details.				
Bachelor of International Studies/Bachelor of Laws	2758 079495G	5 years Mar/July	\$27,120	Parramatta
Bachelor of Science/Bachelor of Laws	2743 044703E	5 years Mar	\$27,120	Campbelltown Parramatta
Professional Recognition/Accreditation: Refer to Bachelor of Science and Bachelor of Laws for details.				
Bachelor of Social Science/Bachelor of Laws	2538 018941G	5 years Mar/July	\$27,120	Campbelltown Parramatta
Professional Recognition/Accreditation: Refer to Bachelor of Social Science and Bachelor of Laws for details.				
Bachelor of Construction Management Studies/Bachelor of Laws	2769 084734M	5 years Mar/July	\$27,120	Campbelltown Parramatta
Professional Recognition/Accreditation: Refer to Bachelor of Laws for details.				
Bachelor of Information and Communications Technology/Bachelor of Laws	2768 084731C	5 years Mar/July	\$27,120	Campbelltown Parramatta
Professional Recognition/Accreditation: Refer to Bachelor of Information and Communications Technology and Bachelor of Laws for details.				
Bachelor of Criminal and Community Justice/Bachelor of Laws	2767 084733A	5 years Mar/July	\$27,120	Campbelltown Parramatta
Professional Recognition/Accreditation: Graduates from this program are eligible to apply to the Legal Profession Admission Board for admission to legal practice in NSW after undertaking prescribed practical legal training.				
Bachelor of Criminology/Bachelor of Laws	2766 084080M	5 years Mar/July	\$27,120	Campbelltown Parramatta
Professional Recognition/Accreditation: Graduates from this program are eligible to apply to the Legal Profession Admission Board for admission to legal practice in NSW after undertaking prescribed practical legal training.				
Bachelor of Information Systems/Bachelor of Laws	2800 095799C	5 years Mar/July	\$27,120	Campbelltown Parramatta
Bachelor of Information Systems Advanced/Bachelor of Laws	2800 095800D	5 years Mar/July	\$27,120	Campbelltown Parramatta

* Specialisation/Majors vary from campus to campus. Please check the online handbook for campus locations of each specialisation or major.

+ Indicative 2018 tuition fee shown in Australian dollars. For further information about course credit points and unit fees, please refer to the international student tuition fees schedule at westernsydney.edu.au/international/fees

^ The B Nursing (Graduate Entry) 4692 (Requires 170 credit points of study: First Year 100cps = \$34,550 Second Year 70 credit points = \$24,185).

Medicine

COURSE NAME	COURSE CRICOS CODE	DURATION INTAKE	2018 ANNUAL INDICATIVE AUD\$ TUITION FEES*	CAMPUS
Bachelor of Medicine/Bachelor of Surgery	4641 060218G	5 years Mar	\$60,760	Campbelltown
Professional Recognition/Accreditation: The Bachelor of Medicine, Bachelor of Surgery (MBBS) program is fully accredited by the Australian Medical Council. Graduates will be eligible for registration as a medical practitioner by the Australian Health Practitioner Regulation Agency.				
Bachelor of Health Science (Paramedicine)	4669 079923D	3 years Mar	\$29,360	Campbelltown

Nursing

COURSE NAME	COURSE CRICOS CODE	DURATION INTAKE	2018 ANNUAL INDICATIVE AUD\$ TUITION FEES*	CAMPUS
Bachelor of Nursing	4691 041099M	3 years Mar	\$27,640	Campbelltown Hawkesbury Liverpool Parramatta
Professional Recognition/Accreditation: This course has accreditation and approval from the Nurses and Midwives Board NSW. From 1 July 2010, the approval, recognition and accreditation of courses has been transferred to the Australian Nursing and Midwifery Council (ANMAC). Course accreditation can be checked on their website (anmac.org.au/accreditation-services). Practitioners applying for registration as a nurse for the first time in Australia are required to demonstrate English language proficiency as specified by the Nursing and Midwifery Board of Australia (NMBA). These requirements include: a) the IELTS examination (academic module) with a minimum score of 7 in each of the four components (listening, reading, writing and speaking), or b) completion and an overall pass in the Occupational English Test (OET) with grades A or B only in each of the four components. For more details see nursingmidwiferyboard.gov.au/Registration-Standards.aspx				
Bachelor of Nursing (Graduate Entry)^	4692 050935E	2 years Jan	\$34,550	Campbelltown Hawkesbury Liverpool Parramatta
Professional Recognition/Accreditation: This course has accreditation and approval from the Nursing and Midwifery Board of Australia (NMBA) which is a partner board of the Australian Health Practitioners Registration Authority (AHPRA). Course accreditation can be checked on their website (nursingmidwiferyboard.gov.au/Accreditation.aspx). Practitioners applying for registration as a nurse for the first time in Australia are required to demonstrate English language proficiency as specified by the Nursing and Midwifery Board of Australia (NMBA). These requirements include: a) the IELTS examination (academic module) with a minimum score of 7 in each of the four components (listening, reading, writing and speaking), or b) completion and an overall pass in the Occupational English Test (OET) with grades A or B only in each of the four components. For more details see nursingmidwiferyboard.gov.au/Registration-Standards.aspx				
Bachelor of Nursing (Advanced)	4693 063558G	3 years Mar	\$27,640	Campbelltown Hawkesbury Liverpool Parramatta

Professional Recognition/Accreditation: Refer to B Nursing.

Sciences

COURSE NAME	COURSE CRICOS CODE	DURATION INTAKE	2018 ANNUAL INDICATIVE AUD\$ TUITION FEES*	CAMPUS
Bachelor of Medical Science	3673 044792K	3 years Mar/July	\$27,640	Campbelltown Hawkesbury Parramatta
Majors*: Anatomy & Physiology, Biomedical Science, Medicinal Chemistry. Professional Recognition/Accreditation: The Medicinal Chemistry major within the Bachelor of Medical Science is accredited by the Royal Australian Chemical Institute (RACI) for normal entry of a graduate to the Chartered Chemist qualification.				
Bachelor of Medical Science (Advanced)	3682 075674D	3 years Mar	\$27,640	Campbelltown Hawkesbury Parramatta
Majors*: Anatomy and Physiology, Biomedical Science, Medicinal Chemistry. Professional Recognition/Accreditation: The Medicinal Chemistry majors for this degree are accredited by the Royal Australian Chemical Institute (RACI) for normal entry of a graduate to the Chartered Chemist qualification.				
Bachelor of Natural Science (Advanced)	3683 075673E	3 years Mar	\$27,640	Hawkesbury

UNDERGRADUATE

Sciences (continued)

COURSE NAME	COURSE CRICOS CODE	DURATION INTAKE	2018 ANNUAL INDICATIVE AUD\$ TUITION FEES*	CAMPUS
Bachelor of Natural Science (Animal Science)	3670 074711A	3 years Mar/July	\$27,640	Hawkesbury
Bachelor of Natural Science (Environmental Management)	3671 074712M	3 years Mar/July	\$27,640	Hawkesbury
Professional Recognition/Accreditation: This course is currently accredited by Environmental Health Australia.				
Bachelor of Science	3675 041144M	3 years Mar/July	\$27,640	Campbelltown Hawkesbury Parramatta
Bachelor of Science (Biological Sciences)	3677 041151A	3 years Mar	\$27,640	Campbelltown Hawkesbury Parramatta
Bachelor of Science (Chemistry)	3676 041153K	3 years Mar	\$27,640	Campbelltown Parramatta
Professional Recognition/Accreditation: The Bachelor of Science (Chemistry) is accredited by The Royal Australian Chemical Institute (RACI).				
Bachelor of Science (Environmental Science)	3680 074707G	3 years Mar	\$27,640	Hawkesbury
Bachelor of Science (Forensic Science)	3589 049084J	3 years Mar	\$27,640	Hawkesbury
Bachelor of Science (Mathematical Science)	3679 041154J	3 years Mar	\$27,640	Campbelltown Parramatta
Bachelor of Science (Nutrition & Food Sciences)	3678 074706J	3 years Mar/July	\$27,640	Hawkesbury
Bachelor of Science (Zoology)	3681 074708G	3 years Mar	\$27,640	Hawkesbury
Bachelor of Science (Advanced Science)	3562 041145K	3 years Mar	\$27,640	Campbelltown Hawkesbury Parramatta
Professional Recognition/Accreditation: The Bachelor of Science (Advanced Science) is accredited by the Royal Australian Chemical Institute (RACI) for normal entry of a graduate to the Chartered Chemist qualification.				
Bachelor of Science – Pathway to Teaching (Primary/Secondary)/ M Teaching Secondary	3638 064315G	3 years Mar/July	\$27,640	Campbelltown Hawkesbury Parramatta
Bachelor of Sustainable Agriculture and Food Security	3726 089441F	3 years Mar/July	\$27,640	Hawkesbury

Social Sciences and Psychology

COURSE NAME	COURSE CRICOS CODE	DURATION INTAKE	2018 ANNUAL INDICATIVE AUD\$ TUITION FEES*	CAMPUS
Bachelor of Anthropology	1790 089197B	3 years Mar/July	\$23,800	Bankstown Penrith
Bachelor of Community Welfare	1665 044766A	3 years Mar/July	\$23,800	Bankstown Parramatta
Professional Recognition/Accreditation: This course is accredited by the Australian Community Workers Association.				
Bachelor of Criminal and Community Justice	1709 083030G	3 years Mar/July	\$23,800	Bankstown Penrith

* Specialisation/Majors vary from campus to campus. Please check the online handbook for campus locations of each specialisation or major.

** Sydney City campus undergraduate courses offer intakes in February, June and October. For course major/specialisations, campus facilities and information about how to apply to Sydney City campus, visit westernsydney.edu.au/city

+ Indicative 2018 tuition fee shown in Australian dollars. For further information about course credit points and unit fees, please refer to the international student tuition fees schedule at westernsydney.edu.au/international/fees

~ The consecutive combination of an undergraduate degree [B Arts (Pathway to Teaching Primary Birth-5 Years/ Birth-12 Years), B Arts (Pathway to Teaching Secondary) or B Science (Pathway to Teaching Secondary)] AND the relevant postgraduate qualification [M Teaching (Birth-5 Years/ Birth - 12 Years) or M Teaching (Secondary)] will prepare students for a career in primary or secondary teaching depending on the Masters program studied. A packaged offer is available.

Social Sciences and Psychology (continued)

COURSE NAME	COURSE CRICOS CODE	DURATION INTAKE	2018 ANNUAL INDICATIVE AUD\$ TUITION FEES*	CAMPUS
Bachelor of Criminology	1710 079498E	3 years Mar/July	\$23,800	Bankstown Penrith
Bachelor of Cyber Security and Behaviour	1837 094541D	3 years Mar/July	\$23,800	Parramatta
Bachelor of Humanitarian and Development Studies	1735 088714E	3 years Mar/July	\$23,800	Parramatta Penrith
Bachelor of Policing	1662 044801C	3 years Mar/July	\$23,800	Bankstown Penrith
Professional Recognition/Accreditation: Developed in collaboration with the NSW Police Force, this course fulfils the academic requirements for employment with them. Graduates seeking employment will be required to meet the entry standards of NSW Police Force on a competitive basis, for example in relation to fitness and other aspects of professional suitability.				
Bachelor of Psychology (Honours)	1865 041143A	4 years Mar/July	\$27,120	Bankstown Parramatta Penrith
Professional Recognition/Accreditation: This course is accredited by the Australian Psychology Accreditation Council (APAC) on the basis that it meets all the APAC Accreditation Standards (June 2010) for a four-year sequence of study in psychology.				
Bachelor of Social Science (Psychology)	1711 082919G	3 years Mar	\$23,800	Bankstown Parramatta Penrith
Professional Recognition/Accreditation: This course is accredited by the Australian Psychology Accreditation Council (APAC) on the basis that it meets all the APAC Accreditation Standards (June 2010) for a three-year sequence of study in psychology.				
Bachelor of Social Science	1667 041159D	3 years Mar/July	\$23,800	Bankstown Parramatta Penrith Sydney City**
Majors*: Anthropology, Child and Community, Criminology and Criminal Justice, Geography and Urban Studies, Heritage and Tourism, Peace and Development Studies, Sociology				
Bachelor of Social Work	1666 013975D	4 years Mar	\$23,800	Bankstown Parramatta
Professional Recognition/Accreditation: This course is accredited by the Australian Association of Social Workers (AASW) and graduates are eligible for membership of the AASW.				

Teaching and Education

COURSE NAME	COURSE CRICOS CODE	DURATION INTAKE	2018 ANNUAL INDICATIVE AUD\$ TUITION FEES*	CAMPUS
Bachelor of Arts (Pathway to Teaching Birth-5/Birth-12)~	1708 086119G	3 years Mar/July	\$23,800	Bankstown Parramatta Penrith
Bachelor of Arts (Pathway to Teaching Primary)~	1651 061012B	3 years Mar/July	\$23,800	Bankstown Parramatta Penrith
Bachelor of Arts (Pathway to Teaching Secondary)~	1652 061013A	3 years Mar/July	\$23,800	Bankstown Parramatta Penrith
Bachelor of Health Science (Health and Physical Education) (Pathway to Teaching Secondary)	4742 089200A	3 years	\$24,280	Campbelltown
Bachelor of Science (Pathway to Teaching Secondary)~	3638 064315G	3 years Mar	\$27,640	Campbelltown Hawkesbury Parramatta
The consecutive combination of an undergraduate degree in one of the above pathway to teaching programs listed AND the relevant postgraduate qualification [M Teaching (Birth-5 Years/Birth-12 Years) or M Teaching (Secondary)] will prepare students for a career in primary or secondary teaching depending on the Masters program studied. A packaged offer is available.				
Bachelor of Graphic Design (Pathway to Teaching Secondary)	1843 095721C	3 years Mar	\$25,480	Parramatta

UNDERGRADUATE

TESOL, Interpreting and Translation

COURSE NAME	COURSE CRICOS CODE	DURATION INTAKE	2018 ANNUAL INDICATIVE AUD\$ TUITION FEES*	CAMPUS
Bachelor of Arts (Interpreting and Translation)	1519 041109C	3 years Mar/July	\$25,480	Bankstown

Professional Recognition/Accreditation: This course is approved by the National Accreditation Authority for Translators and Interpreters (NAATI) at the Professional Level (formerly Level 3). Eligibility for accreditation is triggered by the final examinations in the unit Accreditation Studies (UG), in which students are required to pass (see note below) in at least one mode (i.e. Translation into English, Translation from English, Interpreting). These examinations adhere to NAATI requirements. Note: NAATI requires a minimum pass mark of 70%.

Tourism and Urban Planning

COURSE NAME	COURSE CRICOS CODE	DURATION INTAKE	2018 ANNUAL INDICATIVE AUD\$ TUITION FEES*	CAMPUS
Bachelor of Social Science	1667 041159D	3 years Mar/July	\$23,800	Bankstown Parramatta Penrith

Majors*: Geography and Urban Studies, Heritage and Tourism, Peace and Development Studies.

Bachelor of Planning (Pathway to Master of Urban Management and Planning)	1732 085662C	3 years Mar/July	\$23,800	Parramatta Penrith
---	-----------------	---------------------	----------	-----------------------

Professional Recognition/Accreditation: This course, when completed in conjunction with the Master of Urban Management and Planning, is accredited by the Planning Institute of Australia (PIA).

Bachelor of Tourism Management	1664 056711F	3 years Mar/July	\$23,800	Parramatta
--------------------------------	-----------------	---------------------	----------	------------

The Academy

COURSE NAME	COURSE CRICOS CODE	DURATION INTAKE	2018 ANNUAL INDICATIVE AUD\$ TUITION FEES*	CAMPUS
Bachelor of Arts (Dean's Scholars)	1655 071557G	3 years Mar/July	\$23,800	Parramatta
Bachelor of Business (Advanced Business Leadership)	2787 089206F	3 years Mar/July	\$25,480	Parramatta City

Refer to Bachelor of Business for details.

Bachelor of Business (Advanced Business Leadership)/Bachelor of Laws	2789 071478G	5 years Mar/July	\$27,120	Parramatta
--	-----------------	---------------------	----------	------------

Professional Recognition/Accreditation: Refer to Bachelor of Business and Bachelor of Laws for details.

Bachelor of Computer Science (Advanced)	3634 061245G	3 years Mar	\$27,960	Penrith
---	-----------------	----------------	----------	---------

Professional Recognition/Accreditation: This course is currently accredited with the Australian Computer Society (ACS) at Professional Level.

Bachelor of Engineering (Advanced) Honours	3690 063560B	4 years Mar/July	\$29,960	Parramatta Penrith
--	-----------------	---------------------	----------	-----------------------

Civil, Construction, Electrical, Mechanical, Robotics and Mechatronics

Professional Recognition/Accreditation: Graduates of this program are eligible to apply for full membership of Engineers Australia. You are eligible to apply for Chartered Professional Engineering registration upon successful completion of the required engineering practice period specified by Engineers Australia.

Bachelor of Information Systems (Advanced)	3688 079493K	3 years Mar/July	\$27,960	Parramatta
--	-----------------	---------------------	----------	------------

Professional Recognition/Accreditation: This course is accredited with the Australian Computer Society (ACS) at Professional Level.

Bachelor of Information and Communications Technology (Advanced)	3684 077827J	3 years Mar/July	\$27,960	Campbelltown Parramatta Penrith
--	-----------------	---------------------	----------	---------------------------------------

Professional Recognition/Accreditation: This course is accredited with the Australian Computer Society (ACS) at Professional level.

The Academy (continued)

COURSE NAME	COURSE CRICOS CODE	DURATION INTAKE	2018 ANNUAL INDICATIVE AUD\$ TUITION FEES*	CAMPUS
Bachelor of Medical Science (Advanced)	3682 075674D	3 years Mar	\$27,640	Campbelltown Hawkesbury Parramatta
Majors*: Anatomy & Physiology, Biomedical Science, Medicinal Chemistry.				
Professional Recognition/Accreditation: The Medicinal Chemistry majors for this degree are accredited by the Royal Australian Chemical Institute (RACI) for normal entry of a graduate to the Chartered Chemist qualification.				
Bachelor of Natural Science (Advanced)	3683 075673E	3 years Mar	\$27,640	Hawkesbury
Bachelor of Science (Advanced Science)	3562 041145K	3 years Mar	\$27,640	Campbelltown Hawkesbury Parramatta

Double Degrees

COURSE NAME	COURSE CRICOS CODE	DURATION INTAKE	2018 ANNUAL INDICATIVE AUD\$ TUITION FEES*	CAMPUS
Bachelor of Arts/Bachelor of Business	1818 089210K	4 years Mar/July	\$25,480	Bankstown Parramatta
Professional Recognition and Accreditation: Refer to Bachelor of Arts and Bachelor of Business for details.				
Bachelor of Arts/Bachelor of Social Science	1808 089201M	4 years Mar/July	\$23,800	Bankstown Parramatta Penrith
Bachelor of Arts/Bachelor of Creative Industries	1842 095720D	4 years Mar/July	\$25,480	Parramatta
Bachelor of Music/Bachelor of Creative Industries	1841 095719G	4 years Mar	\$25,480	Penrith
Bachelor of Communication/Bachelor of Creative Industries	1840 095718J	4 years Mar	\$25,480	Parramatta
Bachelor of Design/Bachelor of Creative Industries	1839 Pending#	4 years Mar/July	\$25,480	Parramatta
Bachelor of Communication (Advertising or Public Relations)/ Bachelor of Business	1819 089211J	4 years Mar/July	\$25,480	Parramatta City
Bachelor of Communication/Bachelor of International Studies	1707 088185C	5 years Mar/July	\$25,480	Parramatta
Professional Recognition/Accreditation: Refer to Bachelor of Communication for details.				
Bachelor of Criminal and Community Justice/Bachelor of Social Work	1713 088184B	5 years Mar	\$23,800	Bankstown
Bachelor of Engineering (Honours)/Bachelor of Business	3728 089217C	4 years Mar	\$29,960	Bankstown Campbelltown Parramatta Penrith
Bachelor of Information and Communications Technology/ Bachelor of Arts	3654 068787J	4 years Mar	\$27,940	Parramatta
Professional Recognition/Accreditation: See Bachelor of Information and Communications Technology for details.				
Bachelor of Information and Communications Technology/ Bachelor of Business (Accounting)	3738 089214F	4 years Mar/July	\$27,940	Campbelltown Parramatta
Professional Recognition/Accreditation: See Bachelor of Information and Communications Technology and Bachelor of Business for details.				

* Specialisation/Majors vary from campus to campus. Please check the online handbook for campus locations of each specialisation or major.

+ Indicative 2018 tuition fee shown in Australian dollars. For further information about course credit points and unit fees, please refer to the international student tuition fees schedule at westernsydney.edu.au/international/fees

Courses pending CRICOS codes are not open for application. Please contact us if you require more information.

UNDERGRADUATE

Double Degrees (continued)

COURSE NAME	COURSE CRICOS CODE	DURATION INTAKE	2018 ANNUAL INDICATIVE AUD\$ TUITION FEES*	CAMPUS
Bachelor of Information and Communications Technology/Bachelor of Business	3737 089213G	4 years Mar/July	\$27,960	Bankstown Campbelltown Parramatta
*Marketing or Management major only				
Bachelor of International Studies/Bachelor of Business	1820 089212G	4 years Mar/July	\$25,480	Bankstown Parramatta City
Bachelor of International Studies/Bachelor of Social Science	1807 086124K	4 years Mar/July	\$23,800	Bankstown Parramatta
Bachelor of Science/Bachelor of Arts	3658 068791B	4 years Mar	\$27,640	Parramatta
Bachelor of Science/Bachelor of Business	4748 089207E	4 years Mar	\$27,460	Campbelltown Parramatta City
Professional Recognition/Accreditation: Refer to Bachelor of Science (Chemistry) and Bachelor of Business for details.				
Bachelor of Science/Bachelor of International Studies	3660 068793M	4 years Mar	\$27,640	Parramatta
Professional Recognition/Accreditation: Refer to Bachelor of Science (Chemistry) for details.				
Bachelor of Information Systems/Bachelor of Business	3744 093318G	4 years Mar/July	\$27,960	Campbelltown Parramatta
Bachelor of Information System Advanced/Bachelor of Business	3745 093319G	4 years Mar	\$27,960	Campbelltown Parramatta
Bachelor of Information Systems Advanced/Bachelor of Laws	2800 095800D	5 years Mar/July	\$27,120	Campbelltown Parramatta
Bachelor of Information Systems/Bachelor of Laws	2801 095799C	5 years Mar/July	\$27,120	Campbelltown Parramatta

The tuition fees quoted above are the fees for the normal full-time study load of the course (80 credit points per annum). International students will be subject to a variable fee regime; i.e. enrolled students will be required to pay fees during their course based on the approved fee for each calendar year. Fee changes (if any) will occur at 1 January each calendar year. Students who extend their course past the normal finish date of the course will be required to pay additional fees based on the prevailing fee level.

* Specialisation/Majors vary from campus to campus. Please check the online handbook for campus locations of each specialisation or major.

** Sydney City campus undergraduate courses offer intakes in February, June and October. For course major/specialisations, campus facilities and information about how to apply to Sydney City campus, visit westernsydney.edu.au/city

+ Indicative 2018 tuition fee shown in Australian dollars. For further information about course credit points and unit fees, please refer to the international student tuition fees schedule at westernsydney.edu.au/international/fees

^ The Bachelor of Nursing (Graduate Entry) 4692 (Requires 170 credit points of study: First Year 100cps = \$34,550 Second Year 70 credit points = \$24,185).

Courses pending CRICOS codes are not open for application. Please contact us if you require more information.

~ The consecutive combination of an undergraduate degree [B Arts (Pathway to Teaching Primary Birth-5 Years/ Birth-12 Years), B Arts (Pathway to Teaching Secondary) or B Science (Pathway to Teaching Secondary)] AND the relevant postgraduate qualification [M Teaching (Birth-5 Years/ Birth - 12 Years) or M Teaching (Secondary)] will prepare students for a career in primary or secondary teaching depending on the Masters program studied. A packaged offer is available.

English language requirements: All undergraduate programs (except B Medicine, B Surgery and B Medicine, B Surgery/B Arts) require IELTS 6.5 overall score with a minimum 6.0 in each band. B Medicine/B Surgery and B Medicine/B Surgery/B Arts requires IELTS 7.0 overall score with a minimum 7.0 in each band. Please refer to westernsydney.edu.au/international/entryrequirements for further details.

Western Sydney University is a multi-campus institution. The University reserves the right to alter the location of its courses between campuses and other locations as necessary. Students should be aware of the possibility of change of location for the whole or part of courses for which they enrol and should plan for the need to travel between campuses.

POSTGRADUATE

Arts and Humanities

COURSE NAME Admission Requirements Professional Accreditation/Recognition	COURSE CRICOS CODE	DURATION INTAKE	2018 ANNUAL INDICATIVE AUD\$ TUITION FEES*	CAMPUS
Master of Arts in Continental Philosophy	1824 089383M	1.5 years Mar/July	\$25,480	Bankstown
Applicants must have successfully completed an undergraduate degree in humanities or social sciences. In addition, applicants will be required to provide: a 500 word personal statement, a sample of academic writing, such as an undergraduate essay, to be assessed by Philosophy staff, and two letters of recommendation from past teachers.				
Graduate Diploma in Continental Philosophy	1825 089384K	1 year Mar/July	\$24,480	Bankstown
Graduate Certificate in Continental Philosophy	1826 089385J	6 months Mar/July	\$12,740	Bankstown
Master of Arts in Literature and Creative Writing	1831 086120C	1.5 years Mar/July	\$25,480	Bankstown
Applicants must have successfully completed a Bachelor degree in humanities, social sciences, society and culture or creative art, and provide a 500 word writing sample (an essay or creative work) to be assessed by Writing and Society staff.				
Graduate Diploma in Literature and Creative Writing	1832 086121B	1 year Exit only	\$25,480	Bankstown
Graduate Certificate in Literature and Creative Writing	1833 086122A	6 months Exit only	\$12,740	Bankstown

Business

COURSE NAME Admission Requirements Professional Accreditation/Recognition	COURSE CRICOS CODE	DURATION INTAKE	2018 ANNUAL INDICATIVE AUD\$ TUITION FEES*	CAMPUS
Postgraduate Qualifying Program	2791 089208D	6 months Jan/Apr/Jun/Sep	\$8,000	Parramatta City Sydney City**
Applicants must have successfully completed an Associate Degree, or higher, in a business discipline; OR a minimum of three (3) years, full-time equivalent managerial/professional work experience; OR submitted other evidence of qualifications that demonstrate potential to pursue graduate studies.				
Master of Business (Marketing)	2698 031632M	1 year Jan/Apr/Jun/Sep	\$28,760	Parramatta City
Applicants must have successfully completed an undergraduate degree, or higher, in a business discipline; OR successfully completed an undergraduate degree, or higher, in any discipline AND a minimum of two (2) years, full-time equivalent managerial/professional work experience in a related field; OR successfully completed an undergraduate degree, or higher, in any discipline AND a minimum of five (5) years, general work experience in a related field.				
Master of Business Administration	2761 079261D	2 years Jan/Apr/Jun/Sep	\$28,760	Parramatta City Sydney City**
Either a non-specialisation or a specialisation* in one of the following is available: Finance and Investment, Property, Information and Communications Technology, Human Resource Management, Innovation and Entrepreneurship, Logistics and Supply Chain Management, Management, Marketing, Sustainable Business, Digital Knowledge and Innovation, Business Analytics, Policing, Public Safety and Security.				
Applicants must have successfully completed an undergraduate degree, or higher, in any discipline.				
Executive Master of Business Administration	2762 079922E	2 years Jan/Apr/Jun/Sep	\$36,000	Parramatta City
Applicants must have successfully completed an undergraduate degree, or higher, in any discipline AND have a minimum five (5) years, full-time equivalent managerial/professional work experience; OR successfully completed a Graduate Certificate in Business Administration or Graduate Certificate in Business or equivalent qualification AND have a minimum five (5) years, full-time equivalent managerial/professional work experience.				
Graduate Certificate in Business Administration	2757 044871M	6 months Jan/Apr/Jun/Sep	\$18,000	Parramatta City
Graduate Certificate in Business	2765 044818E	6 months Jan/Apr/Jun/Sep	\$14,380	Parramatta City

* Specialisation/Majors vary from campus to campus. Please check the online handbook for campus locations of each specialisation or major.

** Sydney City campus undergraduate courses offer intakes in February, June and October. For course major/specialisations, campus facilities and information about how to apply to Sydney City campus, visit westernsydney.edu.au/city

+ Indicative 2018 tuition fee shown in Australian dollars. For further information about course credit points and unit fees, please refer to the international student tuition fees schedule at westernsydney.edu.au/international/fees

POSTGRADUATE

Business (continued)

COURSE NAME Admission Requirements Professional Accreditation/Recognition	COURSE CRICOS CODE	DURATION INTAKE	2018 ANNUAL INDICATIVE AUD\$ TUITION FEES*	CAMPUS
Master of Business (Operations Management)	2624 044855M	1 year Jan/Apr/Jun/Sep	\$28,760	Parramatta City
Applicants must have successfully completed an undergraduate degree, or higher, in a business discipline; OR successfully completed an undergraduate degree, or higher, in any discipline AND a minimum of two (2) years, full-time equivalent managerial/professional work experience in a related field; OR successfully completed an undergraduate degree, or higher, in any discipline AND a minimum of five (5) years, general work experience in a related field.				
Master of Human Resources Management	2798 079494J	1 year Jan/Apr/Jun/Sep	\$28,760	Parramatta City
Applicants must have successfully completed a graduate certificate, or higher, in a business discipline; OR successfully completed an undergraduate degree, or higher, in any discipline AND a minimum of two (2) years, full-time equivalent managerial/professional work experience in roles facilitating human resource management, organisational development and training, and employment relations, or in related roles; OR successfully completed an undergraduate degree, or higher, in any discipline AND a minimum of five (5) years, general work experience in human resource management, organisational development and training, and employment relations, or in related roles.				
Professional Recognition/Accreditation: The Master of Human Resources Management is accredited by the Australian Human Resources Institute (AHRI).				
Master of Management	2797 Pending [#]	1 year Jan/Apr/Jun/Sep	\$28,760	Parramatta City
Master of Commerce (Property Investment and Development)	2725 056732A	1 year Jan/Apr/Jun/Sep	\$28,760	Parramatta City
Applicants must have successfully completed an undergraduate degree, or higher, in business or a cognate discipline as recognised by the accrediting body, the Australian Property Institute (API) (property related fields of architecture, building, construction, housing law, engineering, property and town planning); OR successfully completed an undergraduate degree, or higher, in any discipline AND a minimum of two (2) years, full-time equivalent managerial/professional work experience in a related field; OR successfully completed an undergraduate degree, or higher, in any discipline AND a minimum of five (5) years, general work experience in a related field.				
Professional Recognition/Accreditation: This course is accredited by the API for Associate membership. When combined with another API accredited degree students will be granted Certified Practising Valuer (CPV) and Certificate Property Professionals (CPP) certification.				
Master of Accountancy	2691 048969B	2 years Jan/Apr/Jun/Sep	\$28,760	Parramatta City Sydney City**
Applicants must have successfully completed an undergraduate degree, or higher, in any discipline.				
Professional Recognition/Accreditation: Accredited by CPA Australia, The Institute of Chartered Accountants in Australia (ICAA) and the Institute of Public Accountants (IPA).				
Master of Professional Accounting	2689 021362M	1.5 years Jan/Apr/Jun/Sep	\$28,760	Parramatta City
Applicants must have successfully completed an undergraduate degree, or higher, in business; OR successfully completed a Graduate Certificate in any discipline.				
Professional Recognition/Accreditation: Accredited by CPA Australia, The Institute of Chartered Accountants in Australia (ICAA) and the Institute of Public Accountants (IPA).				
Master of Business Administration/Master of Applied Finance	2782 084780E	2.5 years Jan/Apr/Jun/Sep	\$28,760	Parramatta City
Applicants must have successfully completed an undergraduate degree, or higher, in any discipline.				
Professional Recognition/Accreditation: The Master of Business Administration/Master of Applied Finance fulfils the educational requirements for admission as a Senior Associate (SA Fin) of Finsia – the Financial Services Institute of Australasia (Finsia). Senior Associate membership with Finsia also requires at least three years, career experience in the financial services industry. The Master of Business Administration/Master of Applied Finance also allows graduates to satisfy the education requirements for professional membership of the Finance and Treasury Association (FTA) – Certified Finance and Treasury Professional (CFTP).				
Master of Applied Finance	2759 079262C	2 years Jan/Apr/Jun/Sep	\$28,760	Parramatta City
Applicants must have successfully completed an undergraduate degree, or higher, in any discipline.				
Professional Recognition/Accreditation: This course has been accepted into the Chartered Financial Analyst (CFA) Institute University Recognition program. This status is granted to institutions whose degree program(s) incorporate at least 70% of the CFA Program Candidate Body of Knowledge (CBOK), which provide students with a solid grounding in the CBOK and positions them well to obtain the Chartered Financial Analyst designation, which has become the most respected and recognised investment credential in the world. Entry into the CFA Institute University Recognition program signals to potential students, employers, and the marketplace that the SGSM Master of Applied Finance curriculum is closely tied to professional practice and is well suited to preparing students to sit for the CFA examinations. The course also fulfils the educational requirements for admission as a Senior Associate (SA Fin) of Finsia – the Financial Services Institute of Australasia (Finsia). Senior Associate membership with Finsia also requires at least three years, career experience in the financial services industry. The course also allows graduates to satisfy the education requirements for professional membership of the Finance and Treasury Association (FTA) – Certified Finance and Treasury Professional (CFTP).				

Business (continued)

COURSE NAME Admission Requirements Professional Accreditation/Recognition	COURSE CRICOS CODE	DURATION INTAKE	2018 ANNUAL INDICATIVE AUD\$ TUITION FEES*	CAMPUS
Graduate Certificate in Applied Finance	2760 042014B	6 months Jan/Apr/Jun/Sep	\$14,380	Parramatta City
Master of Finance	2705 048971G	1.5 years Jan/Apr/Jun/Sep	\$28,760	Parramatta City
Applicants must have successfully completed an undergraduate degree, or higher, in a business discipline; OR successfully completed an undergraduate degree, or higher, in any discipline AND have a minimum of two (2) years, full-time equivalent managerial/professional work experience; OR successfully completed an undergraduate degree, or higher, in any discipline AND have a minimum eight (8) years, full-time equivalent general work experience.				
Professional Recognition/Accreditation: This course fulfils the educational requirements for admission as a Senior Associate (SA Fin) of the Financial Services Institute of Australasia (Finsia). Senior Associate membership with Finsia also requires at least three (3) years, career experience in the financial services industry. The course also allows graduates to satisfy the education requirements for professional membership of the Finance and Treasury Association (FTA) – Certified Finance and Treasury Professional (CFTP).				
Master of Business Analytics	2799 093320C	1 year Jan	\$28,760	Parramatta City
Graduate Certificate in Accounting	2790 Pending [#]	6 Months Jan/Apr/Jun/Sep	\$14,380	Parramatta City

Computing

COURSE NAME Admission Requirements Professional Accreditation/Recognition	COURSE CRICOS CODE	DURATION INTAKE	2018 ANNUAL INDICATIVE AUD\$ TUITION FEES*	CAMPUS
Master of Data Science	3735 089442E	2 years Mar	\$30,160	Parramatta
To enter the Master of Data Science program, applicants must have successfully completed an undergraduate degree, or higher, in any discipline.				
Graduate Certificate in Data Science	3750 095724M	6 months Mar/July	\$30,160	Parramatta
Graduate Diploma in Data Science	3751 095723A	1 year Mar/July	\$15,080	Parramatta
Master of Information and Communications Technology (Advanced)	3698 063545A	2 or 2.5 years~ Mar/July	\$30,160	Parramatta

One of the following specialisations MUST be selected: Web and Mobile Computing, Networking, Distributed Computing, Health Informatics, Management.

Minimum admission requirements: A Bachelor qualification in any discipline; OR a Diploma in ICT/Computing/IS fields and five (5) years, full-time equivalent work experience in Information and Communications Technologies which includes experience in applying skills in: programming, networking, database design and development, systems analysis and design, and project management. Additional Information: The course length and structure varies based on the student's previous study background and level, and work experience:

Pathway A – Two and a half years - students who have been admitted with non-Computing, non-ICT or non-Information Systems with Bachelor qualifications are eligible to complete the two and a half year pathway.

Pathway B – Two years - students who have been admitted with non-Computing, non-ICT or non-Information Systems with Honours or Masters qualifications are eligible to complete the two year pathway.

Pathway C – Two years - students who have been admitted with Computing, ICT or Information Systems with Bachelor OR with Honours or Masters qualifications are eligible to complete the two year pathway.

Professional Recognition/Accreditation: Refer to Master of Information and Communications Technology.

** Sydney City campus undergraduate courses offer intakes in February, June and October. For course major/specialisations, campus facilities and information about how to apply to Sydney City campus, visit westernsydney.edu.au/city

+ Indicative 2018 tuition fee shown in Australian dollars. For further information about course credit points and unit fees, please refer to the international student tuition fees schedule at westernsydney.edu.au/international/fees

Courses pending CRICOS codes are not open for application. Please contact us if you require more information.

~ Duration depends upon entry qualification. Please refer to online handbook westernsydney.edu.au/handbook

POSTGRADUATE

Computing (continued)

COURSE NAME Admission Requirements Professional Accreditation/Recognition	COURSE CRICOS CODE	DURATION INTAKE	2018 ANNUAL INDICATIVE AUD\$ TUITION FEES*	CAMPUS
Master of Information and Communications Technology	3699 063546M	1.5 or 2 years~ Mar/July	\$30,160	Parramatta Sydney City**

Specialisations*: Web and Mobile Computing, Networking, Distributed Computing Health Informatics, Management.

Minimum admission requirements: A Bachelor qualification in any discipline; OR a Diploma in ICT/Computing/IS fields and five (5) years, full-time equivalent work experience in Information and Communications Technologies, which includes experience in applying skills in: programming, networking, database design and development, systems analysis and design and project management. Additional Information: The course length and structure varies based on the student's previous study background and level, and work experience. Students should refer to the relevant pathway listed below.

Applicants seeking admission on the basis of work experience must support their application with a Statement of Service for all work experience listed on the application.

Pathway A – Two years - students who have been admitted with non-Computing, non-ICT or non-Information Systems with Bachelor qualifications are eligible to complete the two year pathway.

Pathway B – One and a half years - students who have been admitted with non-Computing, non-ICT or non-Information Systems with Honours or Masters qualifications are eligible to complete the one and a half year pathway.

Pathway C – One and a half years - students who have been admitted with Computing, ICT or Information Systems with Bachelor OR with Honours or Masters qualifications are eligible to complete the one and a half year pathway.

Professional Recognition/Accreditation: This course is accredited with the Australian Computer Society (ACS) at Professional Level.

Graduate Diploma in Information and Communications Technology	3700 085559B	1 or 1.5 years~ Mar/July	\$30,160	Parramatta
Graduate Certificate in Information and Communications Technology	3701 065034G	6 months or 1 year~ Mar/July	\$30,160	Parramatta
Master of Information and Communications Technology (Research)	3702 092789G	2 or 2.5 years~ Mar/July	\$30,160	Parramatta
Master of Information Governance	3748 095722B	2 years Jan/Apr/Jun/ Sep	\$30,160	Parramatta

Creative Industries

COURSE NAME Admission Requirements Professional Accreditation/Recognition	COURSE CRICOS CODE	DURATION INTAKE	2018 ANNUAL INDICATIVE AUD\$ TUITION FEES*	CAMPUS
Master of Creative Industries	1856 093774F	2 years Mar/July	\$31,080	Parramatta City
Graduate Diploma in Creative Industries	1856 093775E	1 year Mar/July	\$31,080	Parramatta City
Graduate Certificate in Creative Industries	1829 089218B	6 months Exit only from 1827	\$15,540	Bankstown Parramatta Penrith
Master of Digital Humanities	1836 Pending#	1.5 years Mar/July	\$31,080	Parramatta City

* Specialisation/Majors vary from campus to campus. Please check the online handbook for campus locations of each specialisation or major.

** Sydney City campus undergraduate courses offer intakes in February, June and October. For course major/specialisations, campus facilities and information about how to apply to Sydney City campus, visit westernsydney.edu.au/city

+ Indicative 2018 tuition fee shown in Australian dollars. For further information about course credit points and unit fees, please refer to the international student tuition fees schedule at westernsydney.edu.au/international/fees

Courses pending CRICOS codes are not open for application. Please contact us if you require more information.

~ Duration depends upon entry qualification. Please refer to online handbook westernsydney.edu.au/handbook

Data Science

COURSE NAME Admission Requirements Professional Accreditation/Recognition	COURSE CRICOS CODE	DURATION INTAKE	2018 ANNUAL INDICATIVE AUD\$ TUITION FEES*	CAMPUS
Master of Data Science	3735 089442E	2 years Mar	\$30,160	Parramatta
To enter the Master of Data Science program, applicants must have successfully completed an undergraduate degree, or higher, in any discipline.				
Graduate Certificate in Data Science	3750 095724M	6 months Mar/July	\$30,160	Parramatta
Graduate Diploma in Data Science	3751 095723A	1 year Mar/July	\$15,080	Parramatta

Engineering

COURSE NAME Admission Requirements Professional Accreditation/Recognition	COURSE CRICOS CODE	DURATION INTAKE	2018 ANNUAL INDICATIVE AUD\$ TUITION FEES*	CAMPUS
Master of Engineering	3693 042034J	2 years Mar/Jul	\$30,160	Parramatta City
Specialisations: Civil, Environmental, Mechatronic, Mechanical, Electrical, Telecommunication.				
Applicants must have successfully completed a recognised four-year undergraduate degree, or higher, in engineering in one of the specialisations, e.g. Civil, Environmental, Mechatronic, Mechanical, Electrical, Telecommunication. Additional Information: Advanced standing may be granted for relevant prior studies for students who have successfully completed an Engineers Australia accredited four-year Bachelor of Engineering program. Students who have successfully completed a recognised three-year undergraduate degree in Science or four-year Bachelor of Engineering in a different specialisation or equivalent qualifications must undertake and complete specified non-award undergraduate engineering units with approval of the Director of Academic Program before articulation to the Master of Engineering.				
Graduate Diploma in Engineering	3694 074194F	1.5 years Exit only for 3693	\$30,160	Parramatta City
Graduate Certificate in Engineering	3695 061593J	1 year Mar/July	\$30,160	Parramatta City

Health Sciences

COURSE NAME Admission Requirements Professional Accreditation/Recognition	COURSE CRICOS CODE	DURATION INTAKE	2018 ANNUAL INDICATIVE AUD\$ TUITION FEES*	CAMPUS
Master of Health Science	4698 064020M	1 or 1.5 or 2 years~ Mar/July	\$26,000	Parramatta
One of the following specialisations MAY be selected: Aged Care Management, Health Services Management, Occupational Health and Safety.				
Two-year program applicants must have successfully completed either: an undergraduate degree in any discipline, or equivalent; OR a Graduate Diploma or Graduate Certificate in any discipline plus three (3) years full-time equivalent work experience in a health, welfare or aged care discipline.				
One-and-a-half-year program applicants must have successfully completed either: an undergraduate degree, or higher, in a health, welfare or aged care discipline; OR a Graduate Diploma or Graduate Certificate in a health, welfare or aged care discipline plus three (3) years full-time equivalent work experience in a health, welfare or aged care discipline.				
One-year program applicants must have: an undergraduate Honours degree, or higher, in a health, welfare or aged care discipline.				
Graduate Diploma in Health Science	4700 064831J	1 year Mar/July	\$26,000	Parramatta
Graduate Certificate in Health Science	4701 074199A	6 months Mar/July	\$13,000	Parramatta
Master of Public Health	4702 014002E	1 or 1.5 or 2 years~ Mar/July	\$26,000	Parramatta

Two-year program applicants must have successfully completed an undergraduate degree in any discipline, or equivalent; OR a Graduate Diploma or Graduate Certificate in any discipline plus three (3) years full-time equivalent work experience in a health, welfare or aged care discipline.

One-and-a-half-year program applicants must have successfully completed either an undergraduate degree, or higher, in a health, welfare or aged care discipline; OR a Graduate Diploma or Graduate Certificate in a health, welfare or aged care discipline plus three (3) years, full-time equivalent work experience in a health, welfare or aged care discipline.

One-year program applicants must have an undergraduate Honours degree, or higher, in a health, welfare or aged care discipline.

POSTGRADUATE

Health Sciences (continued)

COURSE NAME Admission Requirements Professional Accreditation/Recognition	COURSE CRICOS CODE	DURATION INTAKE	2018 ANNUAL INDICATIVE AUD\$ TUITION FEES*	CAMPUS
Graduate Diploma in Public Health	4704 052137A	1 year Mar/July	\$26,000	Parramatta
Graduate Certificate in Public Health	4705 Pending [#]	6 months Mar/July	\$13,000	Parramatta
Master of Chinese Medicine	4716 085664A	1.5 year Mar/July	\$29,360	Campbelltown

Applicants must have either: An undergraduate degree in Acupuncture or Traditional Chinese Medicine; OR a Diploma, Advanced Diploma or Associate Degree in Traditional Chinese Medicine or Acupuncture; OR five (5) years full-time equivalent clinical work experience in the field of Traditional Chinese Medicine or Acupuncture and recognition by an Australian professional association representing Chinese herbalists or acupuncturists. Applicants seeking admission on the basis of work experience must support their application with a Statement of Service for all work experience listed on the application. Applicants holding registration from the Chinese Medicine Registration Board of Australia (CMBA) or full membership of any of associations in Group 1 will be accepted without additional assessment. Applicants holding any type of membership other than full membership from any associations in Group 1, or applicants holding any type of membership from any association in Group 2 will be further assessed. For each of these applicants, this assessment will be an interview by the Director of Academic Program and a nominee of the Head of School. The interview will assess the applicant's prior learning, experience in the discipline and understanding of the assumed knowledge appropriate to entry into the course.

Law

COURSE NAME Admission Requirements Professional Accreditation/Recognition	COURSE CRICOS CODE	DURATION INTAKE	2018 ANNUAL INDICATIVE AUD\$ TUITION FEES*	CAMPUS
Master of Laws (International Governance)	2784 087674E	1 year Mar/July	\$28,760	Parramatta

Applicants must have successfully completed a Bachelor of Laws such as an LLB, JD (Juris Doctor) or equivalent from any jurisdiction. The applicant does not have to be admitted to practice as a lawyer in a jurisdiction.

Medicine

COURSE NAME Admission Requirements Professional Accreditation/Recognition	COURSE CRICOS CODE	DURATION INTAKE	2018 ANNUAL INDICATIVE AUD\$ TUITION FEES*	CAMPUS
Master of Epidemiology	4738 088189K	2 years Mar	\$25,480	Parramatta

Two-year program applicants must have successfully completed either an undergraduate degree (AQF Level 7 or equivalent), or higher, in a health, welfare or aged care discipline; OR a Graduate Diploma or Graduate Certificate in a health, welfare or aged care discipline PLUS at least three (3) years, work experience in a health, welfare or aged care discipline.

One-and-a-half-year program (advanced standing) applicants must have an undergraduate Honours degree (AQF Level 8 or equivalent), or higher, in a health, welfare or aged care discipline. In addition to these higher qualifications, applicants with advanced standing must also have a demonstrated breadth of prior knowledge related to health-related policy and/or practice, including epidemiology and its research/policy applications.

Graduate Diploma in Epidemiology	4739 088190F	1 year Mar	\$25,480	Parramatta
Graduate Certificate in Epidemiology	4740 088191E	6 months Mar	\$12,740	Parramatta

Nursing

COURSE NAME Admission Requirements Professional Accreditation/Recognition	COURSE CRICOS CODE	DURATION INTAKE	2018 ANNUAL INDICATIVE AUD\$ TUITION FEES*	CAMPUS
Bachelor of Nursing (Graduate Entry)[^]	4692 050935E	2 years Jan	\$34,550	Campbelltown
Applicants must have successfully completed an (AEI-NOOSR equivalent) undergraduate degree, Graduate Diploma, Masters degree, or higher, in biological sciences, health or behavioural science (completed within the last 10 years); OR completed a three-year post-secondary qualification as a registered nurse (completed within the last 10 years).				
Master of Nursing	4722 085665M	1.5 years Mar/July	\$27,560	Parramatta
Either a non-specialisation or a specialisation in one of the following is available: Clinical Leadership, Clinical Teaching, Aged Care, Primary Health Care, Research Studies.				
Registered Nurse (currently registered with the Australian Health Practitioner Regulation Agency – Nursing and Midwifery), or eligibility for same, or certificate of registration of nursing, within the last five (5) years, in their own country. Any other type of registration (non-practicing, limited or student) is not acceptable for this course; AND completion of an undergraduate degree in health-related sciences (AQF Level 7 or equivalent) in health science, human science, midwifery, naturopathy, nursing, nutrition, psychology; OR completion of a Graduate Diploma in Nursing (AQF Level 8 or equivalent); AND one year full-time equivalent work experience as a registered nurse or registered midwife within the last five years.				
Master of Nursing (Professional Studies)	4735 086213J	2 Years Mar/July	\$27,560	Parramatta
Completion of an undergraduate degree in nursing (AQF Level 7 or equivalent).				
Graduate Diploma in Nursing (Professional Studies)	4736 086214G	1 year Exit only	\$27,560	Parramatta
Graduate Certificate in Nursing (Professional Studies)	4737 086215G	6 months Exit only	\$13,780	Parramatta

Research Studies

COURSE NAME Admission Requirements Professional Accreditation/Recognition	COURSE CRICOS CODE	DURATION INTAKE	2018 ANNUAL INDICATIVE AUD\$ TUITION FEES*	CAMPUS
Master of Research	8086			
Applicants must have successfully completed a Bachelor degree or a Masters degree and achievement of a threshold Admission Average Mark (AAM) equal to or above the minimum of 65; and a statement that outlines a tentative research area.				
Humanities, Arts and Social Science	085508B	2 years Jan/June	\$24,760	Parramatta
Science, Technology, Engineering and Mathematics	085507C	2 years	\$30,110	Parramatta

Sciences

COURSE NAME Admission Requirements Professional Accreditation/Recognition	COURSE CRICOS CODE	DURATION INTAKE	2018 ANNUAL INDICATIVE AUD\$ TUITION FEES*	CAMPUS
Master of Science	3746 Pending [#]	1 year Mar	\$30,160	Parramatta Hawkesbury

+ Indicative 2018 tuition fee shown in Australian dollars. For further information about course credit points and unit fees, please refer to the international student tuition fees schedule at westernsydney.edu.au/international/fees

[^] The Bachelor of Nursing (Graduate Entry) 4692 (Requires 170 credit points of study. First year 100cps = \$34,550, second year 70cps = \$24,185).

[#] Courses pending CRICOS codes are not open for application. Please contact us if you require more information.

POSTGRADUATE

Social Sciences and Psychology

COURSE NAME Admission Requirements Professional Accreditation/Recognition	COURSE CRICOS CODE	DURATION INTAKE	2018 ANNUAL INDICATIVE AUD\$ TUITION FEES*	CAMPUS
Master of Social Science	1770 059409K	2 years Mar/July	\$24,280	Parramatta City
One or two specialisations in the following may be taken: Development, Security and Sustainability, Difference and Diversity, Digital Research and Social Data Analytics, International Criminology, Religion and Society.				
Applicants must have successfully completed an undergraduate degree and/or postgraduate qualification in the broad field of social sciences.				
Graduate Diploma in Social Science	1771 061589E	1 year Mar/July	\$24,280	Parramatta City
Graduate Certificate in Social Science	1772 064144K	6 months Mar/July	\$12,140	Parramatta City
Master of Clinical Psychology	1812 042101C	2 years Mar	\$33,800	Bankstown Penrith

Applicants will be subject to competitive selection based on academic excellence, interview, external referees' reports and consideration of professional experience. An indicative academic achievement based on entry in previous years is a grade point average of 5.5 or higher, or an undergraduate Honours level of class 2 upper level (2A or 2.1 Honours). Applicants, whose degree was completed more than 10 years prior to the year of entry, will not be admitted unless they hold current full registration with the Psychology Board of Australia. No deferrals will be accepted for this course.

Applicants must:

1. Hold an Australian Psychology Accreditation Council (APAC) accredited four-year undergraduate Psychology degree or equivalent
2. Be eligible for provisional registration with the Psychology Board of Australia
3. Arrange for completion and submission of referees reports to Western Sydney University
4. Attend an interview, by invitation, with the School of Social Sciences and Psychology.

Professional Recognition/Accreditation: Australian Psychology Accreditation Council

Graduate Diploma of Psychological Studies	1630 056926B	1.5 years Feb	\$28,080	Bankstown Penrith
Graduate Diploma of Psychology	1796 028481C	1 year Mar	\$33,800	Bankstown

Entry into the school's APAC – accredited 4th year programs in Psychology is limited to students who have completed an approved accredited three-year undergraduate sequence in Psychology (or an approved accredited bridging sequence such as the Graduate Diploma of Psychological Studies) in the last 10 years. In addition, students must have obtained an Average Admission Mark of a credit average (65+ in the Western Sydney University grading system) in Level 2 and 3 units with a majority of credit or higher grades in Level 2 and 3 Psychology units (or the equivalent to Level 2 and 3 at other institutions).

Entry into the Graduate Diploma in Psychology is restricted by supervisory capacity. Limited places are available in this course and meeting the admission criteria does not guarantee entry. Eligible students are selected in order of merit based on their Average Admission Mark in Level 2 and 3 units. There is no provision for deferring an offer of a place.

The school is skilled at evaluating student transcripts. However, the onus will be on applicants with irregular studies to prove they have an accredited three-year Psychology sequence in their undergraduate degree to gain admission to the program and would typically be required to produce a letter from their Head of School to this effect.

Master of Psychotherapy and Counselling	1817 088713F	2 years Mar	\$24,280	Parramatta
--	-----------------	----------------	----------	------------

An undergraduate degree or higher in any discipline and submission of a Statement of Intent and CV detailing voluntary and paid work, relevant life experiences, education and training, and interests, to the satisfaction of the School of Social Sciences and Psychology, AND achieving an interview score of 70% or above in a group applicant interview.

Teaching and Education

COURSE NAME Admission Requirements Professional Accreditation/Recognition	COURSE CRICOS CODE	DURATION INTAKE	2018 ANNUAL INDICATIVE AUD\$ TUITION FEES*	CAMPUS
Master of Teaching (Birth-5 Years/Birth-12 Years)	1783 071442G	2.5 years Mar/July	\$24,480	Bankstown

Applicants must have successfully completed an undergraduate degree in any discipline. Applicants wishing to graduate with a Master of Teaching (Birth-12 Years) must have at least eight units of study in a curriculum area (equivalent of one year of study) in their undergraduate degree in order to meet the curriculum requirements of the NSW Institute of Teachers. Where these requirements are not met, applicants may be offered concurrent enrolment in up to four undergraduate units of study.

Additional Information for Applicants: Current students in the Bachelor of Arts (Pathway to Teaching Birth-5/Birth-12), Bachelor of Social Science (Pathway to Early Childhood Teaching) and Bachelor of Education (Birth-5 Years).

Professional Recognition/Accreditation: This course is a professional teaching qualification for students possessing a relevant Bachelor degree. It has been professionally accredited by the Board of Studies, Teaching and Educational Standards (BOSTES). Graduates will meet the Australian Professional Standards for Graduate Teachers. This course has been approved by the Australian Children's Education and Care Quality Authority (ACECQA).

Teaching and Education (continued)

COURSE NAME Admission Requirements Professional Accreditation/Recognition	COURSE CRICOS CODE	DURATION INTAKE	2018 ANNUAL INDICATIVE AUD\$ TUITION FEES*	CAMPUS
Master of Teaching (Birth-5 Years)	1784 067917A	2 years (Exit only for 1783)	\$24,480	Bankstown
Professional Recognition/Accreditation: The course is designed to meet all the requirements for accreditation by the Australian Children's Education and Care Quality Authority (ACECQA) and has been approved by the ACECQA.				
Master of Teaching (Primary)	1781 067904F	2 years Mar/July	\$24,480	Bankstown
Applicants must have successfully completed an undergraduate degree with at least eight units (equivalent of one year) of study in at least one area relevant to primary teaching in order to meet the curriculum requirements of the NSW Institute of Teachers. Where these requirements are not met, applicants may be offered concurrent enrolment in up to four undergraduate units of study. Additional Information for applicants: Students enrolled in the Bachelor of Arts (Pathway to Teaching Primary) can apply via the Western Sydney University Transition to Teaching.				
Professional Recognition/Accreditation: This course is a professional teaching qualification for students possessing a relevant Bachelor degree. It has been professionally accredited by the Board of Studies, Teaching and Educational Standards (BOSTES). Graduates will meet the Australian Professional Standards for Graduate Teachers.				
Graduate Diploma in Educational Studies (Primary)	1782 069282D	1 year Exit only for 1781	\$24,480	Bankstown
Master of Teaching (Secondary)	1714 057369G	2 years Mar/July	\$24,480	Penrith
Applicants must have successfully completed an undergraduate degree in any discipline. The completed units in the undergraduate degree must match the secondary subject content requirements of the NSW Institute of Teachers for the subject(s) the applicant intends to teach. www.nswteachers.nsw.edu.au/Teaching-in-NSW/Subject-Content-Requirements-abridged Where these requirements are not met, applicants may be offered concurrent enrolment in up to four undergraduate units of study. Additional Information for applicants: Students enrolled in the Bachelor of Arts (Pathway to Teaching Secondary) and Bachelor of Science (Pathway to Teaching Secondary) can apply via the Western Sydney University Transition to Teaching.				
Professional Recognition/Accreditation: This course is a professional teaching qualification for students possessing a relevant Bachelor degree. It has been professionally accredited by the Board of Studies, Teaching and Educational Standards (BOSTES). Graduates will meet the Australian Professional Standards for Graduate Teachers.				
Graduate Diploma in Educational Studies (Secondary)	1715 069283C	1 year Exit only for 1714	\$24,480	Penrith
Master of Education (Leadership and Management)	1850 094196E	1 year Mar/July	\$24,480	Penrith

TESOL, Interpreting and Translation

COURSE NAME Admission Requirements Professional Accreditation/Recognition	COURSE CRICOS CODE	DURATION INTAKE	2018 ANNUAL INDICATIVE AUD\$ TUITION FEES*	CAMPUS
Master of Arts in TESOL	1800 092787J	2 years Mar/July	\$25,480	Parramatta City
Applicants must have successfully completed an undergraduate degree or postgraduate qualification in any discipline.				
Graduate Diploma in TESOL	1801 059714A	1 year Mar/July	\$25,480	Parramatta City
Graduate Certificate in TESOL	1802 061591M	1 year Mar/July	\$19,110	Parramatta City
Master of Translation and TESOL	1816 088716C	2 years Mar/July	\$27,560	Bankstown Parramatta City
Applicants must have successfully completed an undergraduate degree or postgraduate qualification in any discipline. Applicants must have an IELTS score of 7.0 or equivalent and have native or near-native proficiency in one of the following languages: Arabic, Japanese, Korean, Mandarin, Spanish, Thai or Vietnamese.				

+ Indicative 2018 tuition fee shown in Australian dollars. For further information about course credit points and unit fees, please refer to the international student tuition fees schedule at westernsydney.edu.au/international/fees

POSTGRADUATE

TESOL, Interpreting and Translation (continued)

COURSE NAME Admission Requirements Professional Accreditation/Recognition	COURSE CRICOS CODE	DURATION INTAKE	2018 ANNUAL INDICATIVE AUD\$ TUITION FEES*	CAMPUS
Master of Interpreting and Translation	1777 084736J	2 years Mar/July	\$27,560	Bankstown
Applicants must have successfully completed an undergraduate degree or postgraduate qualification in any discipline; AND have native or near-native proficiency in one of the following languages: Arabic, Japanese, Mandarin, and Spanish.				
Professional Recognition/Accreditation: This course is approved by the National Accreditation Authority for Translators and Interpreters (NAATI) at the Professional Level (formerly Level 3). Eligibility for accreditation is triggered by the final examinations in the unit Accreditation Studies, in which students are required to pass (see note below) in at least one mode (i.e. Translation into English, Translation from English, Interpreting). These examinations adhere to NAATI requirements. Note: NAATI requires a minimum pass mark of 70 percent.				
Graduate Diploma in Translation	1776 058261M	1 year Mar/July	\$27,560	Bankstown
Graduate Diploma in Interpreting	1775 058260A	1 year Mar/July	\$27,560	Bankstown
Graduate Diploma in Translation Studies	1779 086035M	1 year Exit only	\$27,560	Bankstown
Graduate Diploma in Interpreting Studies	1778 086034A	1 year Exit only	\$27,560	Bankstown
Master of Arts Translation and Interpreting Studies	1780 058563J	2 years Mar/July	\$27,560	Bankstown
Applicants must have successfully completed an undergraduate degree or postgraduate qualification in any discipline; AND have native or near-native proficiency in one of the following languages: Arabic, Japanese, Mandarin, and Spanish.				
Graduate Certificate in Interpreting and Translation	1602 054066B	6 months Mar/July	\$12,240	Bankstown
Graduate Certificate in Language Teaching and Bilingualism (Birth – 12 Years)	1849 095725K	6 months Mar/July	\$12,240	Bankstown

Therapeutic Studies and Counselling

COURSE NAME Admission Requirements Professional Accreditation/Recognition	COURSE CRICOS CODE	DURATION INTAKE	2018 ANNUAL INDICATIVE AUD\$ TUITION FEES*	CAMPUS
Master of Art Therapy	4595 013543F	2 years Mar	\$23,120	Parramatta
Applicants must meet all of the following requirements: 1. Hold a qualification as detailed below 2. Submit a portfolio of work and CV directly to the school 3. Attend a group Interview on campus (at Penrith).				
Please check the handbook for additional course requirements westernsydney.edu.au/handbook				
Professional Recognition/Accreditation: This course complies with the training guidelines of the Association of Arts Therapy (ANZATA) and has been approved by the ANZATA Accreditation Sub Committee. Course graduates are eligible to apply for professional registration with ANZATA. Depending on their field of employment, Master of Art Therapy graduates may be entitled to industrial award coverage as an Art Therapist under the 2007 NSW Health Professionals Award.				
Master of Creative Music Therapy	1650 060978M	2 years Mar	\$17,850	Penrith
Applicants must have successfully completed an undergraduate degree in any discipline and must attend an audition.				
Professional Recognition/Accreditation: This course is accredited with the Australian Music Therapy Association (AMTA). Graduates of the course are eligible to apply for Registration (RMT) with the AMTA which qualifies them to practice professionally.				
Master of Psychotherapy and Counselling See page 58	1817 088713F	2 years Mar	\$24,280	Parramatta City
Master of Social Work (Qualifying)	1792 088712G	2 years Mar	\$24,280	Parramatta City

Applicants must have successfully completed an undergraduate degree in the areas of Health, Education or Society and Culture, majoring in Psychology or Sociology, AND at least one year, full-time equivalent work experience in human or community services.

Urban Management and Planning

COURSE NAME Admission Requirements Professional Accreditation/Recognition	COURSE CRICOS CODE	DURATION INTAKE	2018 ANNUAL INDICATIVE AUD\$ TUITION FEES*	CAMPUS
Master of Urban Management and Planning	1674 067913E	1 year Mar/July	\$24,280	Parramatta
Applicants must have successfully completed an undergraduate degree in planning, geography, social science, environmental studies, architecture and landscape studies, urban and regional studies or public policy; OR Have a minimum of five (5) years, full-time equivalent work experience in planning, geography, social science, environmental studies, architecture and landscape studies, urban and regional studies or public policy.				
Applicants seeking admission on the basis of work experience MUST support their application with a Statement of Service for all work experience listed on the application.				
Professional Recognition/Accreditation: This course, when completed in conjunction with the Bachelor of Planning (Pathway to Master of Urban Management and Planning), is accredited by the Planning Institute of Australia (PIA).				
Graduate Diploma in Urban Management and Planning	1675 067914D	1 year Mar/July	\$18,210	Parramatta
Graduate Certificate in Urban Management and Planning	1676 067915C	0.5 year Mar/July	\$12,140	Parramatta
Master of Planning	1712 080224K	2 years Mar/July	\$24,280	Parramatta City

Applicants must have successfully completed an undergraduate degree; OR have a minimum of five years (5), full-time equivalent work experience in planning, geography, social science, environmental studies, architecture and landscape studies, urban and regional studies or public policy. Applicants seeking admission on the basis of work experience MUST support their application with a Statement of Service for all work experience listed on the application.

The tuition fees quoted above are the fees for the normal full-time study load of the course (80 credit points per annum). International students will be subject to a variable fee regime, i.e. enrolled students will be required to pay tuition fees based on the approved fee for each calendar year. Fee changes (if any) will occur at 1 January each calendar year. Students who extend their course past the normal finish date of the course, will be required to pay additional fees based on the prevailing fee level.

- * Specialisation/Majors vary from campus to campus. Please check the online handbook for campus locations of each specialisation or major.
- ** Sydney City campus undergraduate courses offer intakes in February, June and October. For course major/specialisations, campus facilities and information about how to apply to Sydney City campus, visit westernsydney.edu.au/city
- + Indicative 2018 tuition fee shown in Australian dollars. For further information about course credit points and unit fees, please refer to the international student tuition fees schedule at westernsydney.edu.au/international/fees
- ^ The B Nursing (Graduate Entry) 4692 (Requires 170 credit points of study. First year 100cps = \$34,550, second year 70cps = \$24,185).
- # Courses pending CRICOS codes are not open for application. Please contact us if you require more information.
- ~ Duration depends upon entry qualification. Please refer to online handbook westernsydney.edu.au/handbook

INTAKE COMMENCEMENT DATES:

All teaching courses have an earlier commencement date for both February and July intakes. For early commencement dates, please check westernsydney.edu.au/international/importantdates

Western Sydney University is a multi-campus institution. Western Sydney University reserves the right to alter the location of its courses between campuses and other locations as necessary. Students should be aware of the possibility of change of location for the whole or part of courses for which they enrol and should plan for the need to travel between campuses.

RESEARCH

COURSE NAME	COURSE CODE	CRICOS CODE	2018 FEE PER YEAR (AUD\$)
SCHOOL OF BUSINESS			
Doctor of Philosophy – Business	8048	050316k	\$24,530
Master of Commerce (Honours)	8003	050319G	\$23,270
Master of Philosophy (Commerce)	8094	050319G	\$23,270
SCHOOL OF COMPUTING, ENGINEERING AND MATHEMATICS			
Doctor of Philosophy – Computing, Engineering, Mathematics	8050	050320C	\$24,530
Doctor of Philosophy – Engineering	8068	050321B	\$27,070
Master of Philosophy (Computing and Mathematics)	8095	050323M	\$23,890
Master of Philosophy (Engineering)	8096	028028B	\$23,890
Master of Philosophy (Engineering)	8097	028028B	\$25,830
Doctor of Philosophy – Infrastructure Engineering	8080	050321B	\$27,070
Master of Philosophy (Infrastructure Engineering)	8106	028028B	\$25,830
SCHOOL OF EDUCATION			
Doctor of Philosophy – Education	8040	050308K	\$23,890
Doctor of Education	8013	050306A	\$23,890
Master of Philosophy (Education)	8088	050313B	\$23,890
Master of Philosophy (Education Research)	8089	050313B	\$23,890
SCHOOL OF HUMANITIES AND COMMUNICATION ARTS			
Doctor of Philosophy – Humanities and Communication Arts	8053	050308K	\$25,830
Doctor of Creative Arts	8012	050308K	\$25,830
Doctor of Cultural Research	8030	050308K	\$25,830
Master of Philosophy (Humanities and Communication Arts)	8098	050312C	\$23,890
SCHOOL OF LAW			
Doctor of Philosophy – Law	8042	050316K	\$24,530
Master of Philosophy (Laws)	8090	050318G	\$23,270
SCHOOL OF MEDICINE			
Doctor of Medicine	8033	092784A	\$28,650
Doctor of Philosophy – Medicine	8044	050324K	\$28,650
Master of Philosophy (Medicine)	8091	092785M	\$28,650
SCHOOL OF NURSING AND MIDWIFERY			
Doctor of Philosophy – Nursing and Midwifery	8046	050320C	\$24,530
Master of Nursing (Honours)	8018	050329E	\$23,890
Master of Philosophy (Nursing)	8092	050329E	\$23,890
Master of Philosophy (Midwifery)	8093	092786K	\$23,890
SCHOOL OF SCIENCE AND HEALTH			
Doctor of Philosophy – Science	8056	050321B	\$27,070
Doctor of Philosophy – Health Science	8057	050320C	\$24,530
Master of Philosophy (Health Science)	8099	050322A	\$23,890
Master of Philosophy (Science)	8100	050328F	\$25,830
SCHOOL OF SOCIAL SCIENCES AND PSYCHOLOGY			
Doctor of Philosophy – Psychology	8062	050330A	\$25,830
Doctor of Philosophy – Social Science	8063	050330A	\$23,890
Master of Philosophy (Social Science)	8101	050315M	\$23,890
Master of Philosophy (Psychology)	8102	050315M	\$23,890

COURSE NAME	COURSE CODE	CRICOS CODE	2018 FEE PER YEAR (AUD\$)
RESEARCH STUDIES AND COMBINED PHD PROGRAMS			
Master of Research – (Science, Technology, Engineering and Maths)	8084	085507C	\$30,110
Master of Research – (Humanities, Arts and Social Science)	8085	085508B	\$24,760
HAWKESBURY INSTITUTE FOR THE ENVIRONMENT (HIE)			
Doctor of Philosophy – HIE	8071	050320C	\$27,070
Master of Philosophy (HIE)	8103	050322A	\$25,830
INSTITUTE FOR CULTURAL AND SOCIETY (ICS)			
Doctor of Philosophy – Culture and Society	8074	050316K	\$25,830
Master of Philosophy (Culture and Society)	8104	050312C	\$23,890
THE MARCS INSTITUTE FOR BRAIN, BEHAVIOUR AND DEVELOPMENT			
Doctor of Philosophy – MARCS	8077	050330A	\$27,070
Master of Philosophy (MARCS)	8105	050315M	\$25,830



PATHWAYS PROGRAM

Western Sydney University The College (The College) – wholly owned by Western Sydney University – offers students a pathway to university study through its comprehensive range of University Foundation Studies, Diploma programs and English Language programs.

Small class sizes and individualised attention from academic staff provide a well-supported environment for students to succeed in their tertiary studies. Successful completion of a University Foundation Studies or Diploma program at The College guarantees entry into a corresponding Western Sydney University undergraduate degree program. For more information, visit

westernsydney.edu.au/thecollege

The College has over 20 years of experience in providing English and Academic Pathways Programs to domestic and international students. This experience enables The College to provide high-quality education opportunities, and our relationship with Western Sydney University allows us to leverage expertise and resources from the University. This is why students from around the globe rank The College and Western Sydney University as their preferred education destinations in Australia.

We focus on preparing students for undergraduate and postgraduate study by developing their academic, learning and study skills through a range of programs. This means providing a flexible student-centred approach to teaching and learning.

The College offers the following choices:

- Academic Pathways Program, including:
 - University Foundation Studies
 - Diploma programs
 - Associate Degree programs
- English Language programs
- English Language Entrance Test and preparation courses including IELTS (International English Language Testing System)
- PTE (Pearson Test of English), and
- Professional and community short courses (RTO – Registered Training Organisation programs).

We develop, design and deliver programs that support students to succeed in studying and in their chosen careers. As a result, there are high levels of satisfaction, retention and progression among students.

ACADEMIC PATHWAYS PROGRAM

To help you meet the University entry requirements and your career aspirations, The College offers a range of tailored courses in University Foundation Studies and Diploma programs.

The College provides pathways in the following fields:

- Arts (for students wishing to study Arts, Education, Humanities, Law, Psychology and Social Science)
- Building Design Management
- Business
- Communication
- Construction Management
- Criminal and Community Justice
- Design
- Engineering
- Health Science/Nursing
- Information and Communications Technology
- Science
- Social Science.



University Foundation Studies

University Foundation Studies prepare students for university study, both academically and socially, by offering courses that provide an introduction to the knowledge and skills needed for Australian university study.

Completion of University Foundation Studies guarantees direct entry into the first year of the corresponding Bachelor degree at Western Sydney University. However, students who need extra support are offered entry into the corresponding Diploma at The College. Depending on your academic background, you will either undertake the 8 month (standard – 2 terms) or 12 month (extended – 3 terms) Diploma program.

Diploma Program

The Diploma program is recommended for students who do not meet the Academic and English entry requirements needed to go straight into a university undergraduate degree*.

All Diplomas are designed in collaboration with Western Sydney University. This means the educational outcomes for students undertaking a Diploma at The College are equivalent to those of first year students studying an undergraduate degree at Western Sydney University.

Completion of a Diploma guarantees direct entry into the second year of the corresponding Bachelor degree at Western Sydney University.

Depending on your academic qualifications, you will either undertake the 8 months (fast track – 2 terms), 12 months (standard – 3 terms) or 16 months (extended – 4 terms) program.

*A student's pathway depends on the overall results they achieve and course availability. For more information, see pages 69-70.

ENGLISH LANGUAGE PROGRAMS

The College has a national and international reputation for excellence built on the results we deliver. We are a member of English Australia and University English Centres Australia (UECA) and all of our English programs are accredited with TEQSA for the Australian Government (CRICOS Provider Code 02851G) which means we are licensed to teach English to international students. The College is also quality endorsed by NEAS (National ELT Accreditation Scheme).

All English Language programs are accredited courses that can give you the confidence and communication skills you need to meet the challenges of university study and attain a level of language proficiency required for entry to Western Sydney University. Whether you want to improve your general communication skills, pass an important exam or attend an English speaking university, we have a course for you. Choose from English for Academic Purposes (EAP), Communicating in English (General English (GE)), Advanced Academic English and IELTS Preparation Courses. For more information, see pages 71-72.

Academic English For Tertiary Studies (CRICOS Code 082069M)

Academic English for Tertiary Studies has been specifically designed to develop ESL students' English proficiency to enable them to communicate confidently, express ideas effectively and achieve rhetorical competence so that they attain a level of language proficiency corresponding to the standard required for entry to Australian tertiary educational institutions.

This course has five modules, English for Academic Purposes (EAP) 1 to EAP 5, catering for Pre-Intermediate to Advanced English level students. Each module consists of 10 weeks and includes 20 hours per week of face-to-face teaching.

→ **EAP 1** – This course provides a bridge between general English skills and academic skills in reading, listening, speaking and writing. During the course, students will concentrate on basic grammar and sentence structure, leading to more complex texts.

→ **EAP 2** – EAP 2 provides students with a foundation in academic writing, reading, listening and speaking skills through general coursework, oral presentations, factual reports and regular assignments.

→ **EAP 3** – This level consolidates students' understanding of a range of academic texts and builds on the skills developed in the EAP 2 course.

→ **EAP 4** – EAP 4 extends students' proficiency in academic English with opportunities to strengthen their language and critical literacy skills in preparation for tertiary study.

→ **EAP 5** – EAP 5 allows students to further develop their language skills in academic writing, reading, listening and speaking to a competent level. It is excellent preparation for the university environment. Students who successfully complete EAP 5 do not need to take any further English language tests to gain entry to their study at Western Sydney University.

Advanced Academic English Skills (CRICOS Code 082209D)

This program has two components:
→ Module A: Reading and Writing
→ Module B: Listening and Speaking.

Module A provides students with the intensive writing and reading practice they need. It is designed for students who either have IELTS (Academic) 6.5 or above but only a 5.5 in reading and writing, or need to polish their reading and writing skills before entry to tertiary studies.

Module B focuses on providing students with high-level spoken communication skills for work or further study. It is designed to help improve fluency, pronunciation and public speaking skills. It combines well with Module A.

PATHWAYS PROGRAM

Master of Teaching Direct Entry English Program (CRICOS Code 084618D)

This program is designed to provide an integrated skills program of listening, speaking, reading and writing to develop students' English language proficiency to an overall 7.5 IELTS with a minimum 8 in Speaking and Listening and minimum of 7 in Reading and Writing. The course incorporates practice in academic study skills and practice in language skills particularly pertinent to teaching in the Australian school sector.

Communicating in English (General English) (CRICOS Code 082210M)

The General English program prepares students for effective English language communication. The program is designed to develop English proficiency from a beginner level through to an advanced level, and teaches students how to communicate effectively in everyday society.

Postgraduate Qualifying Program (PQP) and English Enhancement Program (EEP)

This is a pathway program to the postgraduate courses in Western Sydney School of Business. For students who have 6 IELTS only, they can study concurrent English (EEP) with their PQP program to complete both their English and academic requirements for Masters level study.

Packaging Programs

Western Sydney University The College English courses can be packaged with University Foundation Studies and/or Diploma courses as well as Western Sydney University degrees. One of the advantages of packaged programs is that only one visa is required for the entire study period at The College. Where a package includes English, no further external English test will be necessary before beginning your next course at The College or Western Sydney University.

English Entrance Test

The College offers an English language testing service to determine whether you have the English language skills required for direct entry to Western Sydney University and The College. The two-hour English Entrance Test will assess your English skills in listening, reading and writing.

Test Centre

The College Test Centre caters for students wishing to do both the IELTS (International English Language Testing System) and the PTE (Pearson Test of English). Both these international tests of English are accepted for entry to universities and other educational institutions as well as professional accreditation bodies.

Test information for both IELTS and PTE is available on the College website.

Western Sydney University International College

Western Sydney University International College delivers courses to international students on behalf of Western Sydney University The College on the Parramatta City Campus at 100 George Street. To find the full list of the courses on offer, visit The College website westernsydney.edu.au/thecollege

DID YOU KNOW?

The College English Language programs offer a range of fully accredited qualifications that are recognised in Australia and internationally.

The College has membership of English Australia and University English Language Centres Australia (UECA). Also, all of the College's English programs are quality endorsed by the National ELT Accreditation Scheme (NEAS) Limited Australia and accredited with TEQSA.



ACADEMIC PATHWAYS PROGRAM

Diploma Programs

To help students meet the University's entry requirements and their career aspirations, The College offers a full suite of University Foundation Studies and Diploma programs with direct entry into Western Sydney University programs.

Arts

COURSE	COURSE CODE	CRICOS CODE	DURATION	INTAKE	CAMPUS	TUITION FEES
Diploma in Arts (Standard)	7049	078256J	3 terms – 12 months	Mar/Jul/Nov	Parramatta City	\$23,000
Diploma in Arts (Extended)	7113	086040C	4 terms – 16 months	Mar/Nov	Nirimba	\$30,500

Business

COURSE	COURSE CODE	CRICOS CODE	DURATION	INTAKE	CAMPUS	TUITION FEES
Diploma in Business (Fast Track)	7100	089389E	2 terms – 8 months	Mar/Jul/Nov	Parramatta City	\$22,000
Diploma in Business (Standard)	7098	089388F	3 terms – 12 months	Mar/Jul/Nov	Parramatta City	\$24,500
Diploma in Business (Extended)	7102	089390A	4 terms – 16 months	Mar/Nov	Nirimba	\$32,500

Communication and Design

COURSE	COURSE CODE	CRICOS CODE	DURATION	INTAKE	CAMPUS	TUITION FEES
Diploma in Communication (Standard)	7043	087974D	3 terms – 12 months	Mar/Jul	Nirimba	\$25,000
Diploma in Communication (Extended)	7053	086041B	4 terms – 16 months	Mar/Nov	Nirimba	\$33,500
Diploma in Design (Standard)	7044	087975C	3 terms – 12 months	Mar/Jul	Nirimba	\$24,500
Diploma in Design (Extended)	7054	087976B	4 terms – 16 months	Mar/Nov	Nirimba	\$33,500

Information and Communications Technology

COURSE	COURSE CODE	CRICOS CODE	DURATION	INTAKE	CAMPUS	TUITION FEES
Diploma in Information and Communications Technology (Fast Track)	7004	063563K	2 terms – 8 months	Mar/Jul/Nov	Parramatta City	\$22,000
Diploma in Information and Communications Technology (Standard)	7005	063564J	3 terms – 12 months	Mar/Jul/Nov	Parramatta City	\$24,500
Diploma in Information and Communications Technology (Extended)	7067	085668G	4 terms – 16 months	Mar/Nov	Nirimba	\$32,500
Diploma in Information and Communications Technology (Health Information Management) (Standard)	7104	094502M	3 terms – 12 months	Mar/Jul	Nirimba	\$24,500
Diploma in Information and Communications Technology (Health Information Management) (Extended)	7106	094503K	4 terms – 16 months	Mar/Nov	Nirimba	\$32,500

ACADEMIC PATHWAYS PROGRAM

Diploma Programs

Construction and Engineering

COURSE	COURSE CODE	CRICOS CODE	DURATION	INTAKE	CAMPUS	TUITION FEES
Diploma in Building Design Management (Standard)	7108	094500B	3 terms – 12 months	Mar/Jul	Nirimba	\$30,000
Diploma in Building Design Management (Extended)	7110	094501A	4 terms – 16 months	Mar/Nov	Nirimba	\$38,500
Diploma in Construction Management (Standard)	7015	069053F	3 terms – 12 months	Mar/Jul	Nirimba	\$30,000
Diploma in Construction Management (Extended)	7065	085666K	4 terms – 16 months	Mar/Nov	Nirimba	\$38,500
Diploma in Engineering (Fast Track)	7035	068985C	2 terms – 8 months	Mar/Jul/Nov	Parramatta City	\$28,000
Diploma in Engineering (Standard)	7034	063562M	3 terms – 12 months	Mar/Jul/Nov	Parramatta City	\$30,800
Diploma in Engineering (Extended)	7066	085667J	4 terms – 16 months	Mar/Nov	Penrith	\$39,800

Health Science/Nursing

COURSE	COURSE CODE	CRICOS CODE	DURATION	INTAKE	CAMPUS	TUITION FEES
Diploma in Health Science (Standard)	7018	068986B	3 terms – 12 months	Mar/Jul	Nirimba	\$26,500
Diploma in Health Science (Extended)	7068	085504F	4 terms – 16 months	Mar/Nov	Nirimba	\$33,500
Diploma in Health Science (HPE) (Standard)	7088	091415A	3 terms – 12 months	Mar/Jul	Nirimba	\$26,500
Diploma in Health Science (HPE) (Extended)	7090	091416M	4 terms – 16 months	Mar/Nov	Nirimba	\$33,500

Science

COURSE	COURSE CODE	CRICOS CODE	DURATION	INTAKE	CAMPUS	TUITION FEES
Diploma in Science (Standard)	7084	063567F	3 terms – 12 months	Mar/Jul	Nirimba	\$30,500
Diploma in Science (Extended)	7086	085506D	4 terms – 16 months	Mar/Nov	Nirimba	\$35,000

Criminal and Community Justice and Social Science

COURSE	COURSE CODE	CRICOS CODE	DURATION	INTAKE	CAMPUS	TUITION FEES
Diploma in Criminal and Community Justice (Standard)	7032	082637F	3 terms – 12 months	Mar/Jul	Bankstown	\$23,000
Diploma in Criminal and Community Justice (Extended)	7055	086042A	4 terms – 16 months	Mar/Nov	Bankstown	\$30,500
Diploma in Social Science (Standard)	7050	069055D	3 terms – 12 months	Mar/Jul	Nirimba	\$23,000
Diploma in Social Science (Extended)	7057	086043M	4 terms – 16 months	Mar/Nov	Nirimba	\$30,500

Diploma to Degree Articulation

Successful completion of the Diploma provides advanced standing of 80 credit points (equivalent to one year of study) in the corresponding Bachelor degree at Western Sydney University. To successfully complete your Diploma, you will need at least a 50% pass in all required units.

DIPLOMA TO DEGREE ARTICULATION	
DIPLOMA PATHWAY	BACHELOR PATHWAY – INTO SECOND YEAR OF STUDY IN THE FOLLOWING BACHELOR DEGREE AT WESTERN SYDNEY UNIVERSITY
Diploma in Arts (Standard) Diploma in Arts (Extended)	Bachelor of Arts majoring in: → Arabic → Chinese → Creative Writing → Cultural and Social Analysis → English → History and Political Thought → Indigenous and Australian Studies → International Relations and Asian Studies → Indonesian → International English → Islamic Studies → Japanese → Linguistics → Musicology → Music Performance → Philosophy → Psychological Studies Bachelor of Arts (Pathway to Teaching Primary) Bachelor of Arts (Pathway to Teaching Secondary) Bachelor of Arts (Pathway to Teaching Birth-5/Birth-12) Bachelor of Arts (Interpreting and Translation)
Diploma in Building Design Management (Standard) Diploma in Building Design Management (Extended)	Bachelor of Building Design Management
Diploma in Business (Fast Track) Diploma in Business (Standard) Diploma in Business (Extended)	Bachelor of Business majoring in: → Accounting → Applied Finance → Economics → Hospitality Management → Human Resources Management → International Business → Management → Marketing → Property → Sport Management
Diploma in Construction Management (Fast Track) Diploma in Construction Management (Standard) Diploma in Construction Management (Extended)	Bachelor of Construction Management Bachelor of Construction Technology
Diploma in Communication (Standard) Diploma in Communication (Extended)	Bachelor of Communication Bachelor of Creative Industries Bachelor of Screen Media
Diploma in Criminal and Community Justice (Standard) Diploma in Criminal and Community Justice (Extended)	Bachelor of Criminal and Community Justice
Diploma in Design (Standard) Diploma in Design (Extended)	Bachelor of Design (Visual Communication) Bachelor of Graphic Design (Pathway to Teaching Secondary)
Diploma in Engineering (Fast Track) Diploma in Engineering (Standard) Diploma in Engineering (Extended)	Bachelor of Engineering (Honours) Bachelor of Engineering Science
Diploma in Health Science (Fast Track) Diploma in Health Science (Standard) Diploma in Health Science (Extended)	Bachelor of Health Science Key Programs: Health Promotion, Health Services Management, Therapeutic Recreation and Public Health

Diploma to Degree Articulation

DIPLOMA TO DEGREE ARTICULATION	
DIPLOMA PATHWAY	BACHELOR PATHWAY – INTO SECOND YEAR OF STUDY IN THE FOLLOWING BACHELOR DEGREE AT WESTERN SYDNEY UNIVERSITY
Diploma in Health Science (Health and Physical Education) (HPE) (Standard) Diploma in Health Science (Health and Physical Education) (HPE) (Extended)	Bachelor of Health Science (Health and Physical Education) (HPE)
Diploma in Information and Communications Technology (Fast Track) Diploma in Information and Communications Technology (Standard) Diploma in Information and Communications Technology (Extended)	Bachelor of Information and Communications Technology majoring in: → Cyber Security → Entertainment Computing → Health Informatics → Information Technology → Mathematics → Mobile Computing → Networking → Web Systems Development Bachelor of Information Systems majoring in: → Big Data → Entertainment Computing → Health Informatics → Networking → Mobile Computing → Mathematics
Diploma in Information and Communications Technology (Health Information Management) (Standard) Diploma in Information and Communications Technology (Health Information Management) (Extended)	Bachelor of Information and Communications Technology (Health Information Management)
Diploma in Science (Fast Track) Diploma in Science (Standard) Diploma in Science (Extended)	Bachelor of Science majoring in: → Biochemistry and Molecular Biology → Chemistry → Climate Change → Conversation Biology → Environmental Consulting → Forensic Chemistry → General Biology → Marine Biology → Nutrition and Physiology → Zoology Bachelor of Medical Science majoring in: → Biomedical Science → Medicinal Chemistry → Nanotechnology → Anatomy and Physiology → Forensic Mortuary Practice Bachelor of Natural Science
Diploma in Social Science (Standard) Diploma in Social Science (Extended)	Bachelor of Social Science majoring in: → Anthropology → Child and Community → Criminology and Criminal Justice → Geography and Urban Studies → Heritage and Tourism → Peace and Development Studies → Sociology Bachelor of Humanitarian and Developmental Studies

*Note: Students interested in undertaking further study or a double degree at Western Sydney University in Law will need to select the corresponding elective and achieve a credit average to be guaranteed a place.

ACADEMIC PATHWAYS PROGRAM

University Foundation Studies

COURSE	COURSE CODE	CRICOS CODE	DURATION	INTAKE	CAMPUS	TUITION FEES
University Foundation Studies – Arts Stream (Standard)	9018	016665E	2 terms – 8 months	Mar	Bankstown	\$20,000
				Mar/July	Nirimba	
University Foundation Studies – Business Stream (Standard)	9018	016665E	2 terms – 8 months	Mar/Jul/Nov	Parramatta City	\$20,000
University Foundation Studies – Business Stream (Extended)	9020	064561D	3 terms – 12 months	Mar/Jul/Nov	Parramatta City	\$26,200
University Foundation Studies – Health Science/Nursing Stream (Standard)	9018	016665E	2 terms – 8 months	Mar/Jul/Nov	Parramatta City	\$20,000
University Foundation Studies – Health Science/Nursing Stream (Extended)	9020	064561D	3 terms – 12 months	Mar/Jul/Nov	Parramatta City	\$26,200
University Foundation Studies (Standard)	9018	016665E	2 terms – 8 months	Mar/Jul/Nov	Parramatta City	\$20,000
University Foundation Studies (Extended)	9020	064561D	3 terms – 12 months	Mar/Jul/Nov	Parramatta City	\$26,200



Francesca Nayve

PHILIPPINES

GRADUATE STUDENT IN UNIVERSITY FOUNDATION STUDIES: HEALTH SCIENCE & NURSING

CURRENTLY AT WESTERN SYDNEY UNIVERSITY STUDYING BACHELOR OF NURSING

“I started studying at Western Sydney University International College when I was 17, having completing year 10 in the Philippines. My aunt and uncle live in Western Sydney and it was important to my parents and me that I study and live close to them. The International College taught me to manage my time effectively and understand my priorities, so I could achieve the best results. I learnt that participating during tutorials and asking questions is really important too.”



University Foundation Studies to Bachelor degree articulation requirements

At the completion of each term of the University Foundation Studies program, students will receive a number called a Grade Point Average (GPA). The highest GPA attainable is 10. These GPAs will typically determine a student's academic progression to the next term or course. The minimum articulation requirements for Western Sydney University courses are listed below.

Courses which have a high demand or limited places available will usually have a higher GPA requirement.

Minimum entry requirements for entry into an undergraduate degree for University Foundation Studies program students are listed below.

UNDERGRADUATE COURSE	UNIVERSITY FOUNDATION STUDIES QUALIFYING COURSE	MINIMUM GPA REQUIRED	MINIMUM ENGLISH RESULT	MINIMUM MATHS RESULT
SCHOOL OF HUMANITIES AND COMMUNICATION ARTS				
B Arts	Arts/Business/Nursing	6.0	B	-
B Arts (Interpreting and Translation)	Arts	6.0	B	-
B Arts (Pathway to Teaching Primary) B Arts (Pathway to Teaching Secondary)	Arts	6.0	B	-
B Communication	Arts	7.0	B	-
B Design (Visual Communication)	Arts	7.5	B	-
B International Studies	Arts	7.0	B	-
SCHOOL OF SOCIAL SCIENCES AND PSYCHOLOGY				
B Community Welfare	Arts	6.0	B	-
B Psychology	Arts	8.0	B	-
B Social Work	Arts	7.0	B	-
B Social Science	Arts	6.0	B	-
B Tourism Management	Arts	6.0	B	-
SCHOOL OF BUSINESS				
B Business	Arts/Business	6.5	C	
SCHOOL OF COMPUTING, ENGINEERING AND MATHEMATICS				
B Construction Management	Business	6.0	C	C
B Building Design Management	Business	6.0	C	C
B Construction Technology	Business	6.0	C	C
SCHOOL OF SCIENCE AND HEALTH				
B Health Science – Health Promotion, Health Services Management, Therapeutic Recreation, Public Health	Science/Nursing	6.5	B	-
B Health Science – HPE	Science/Nursing	6.5	B	-
B Health Science (Sport & Exercise Science)	Science	7.0	B	-
B Medical Science	Science	6.5	C	C
B Sustainable Agriculture and Food Security	Science	6.5	C	C
B Natural Science (Environmental Management)	Science	6.5	C	C
B Natural Science (Animal Science)	Science	6.5	C	C
B Science – (Biological Sciences) (Chemistry) (Environmental Science) (Zoology)	Science	6.5	C	C+
B Science (Forensic Science)	Science	6.5	C	C+
B Science (Mathematical Science)	Science	6.5	B	B
B Science (Nutrition & Food Sciences)	Science	6.5	C	C+
SCHOOL OF NURSING AND MIDWIFERY				
B Nursing	Science/Nursing	7.0	B	C

Overall performance in the University Foundation Studies program is measured on a 10 point Grade Point Average (GPA).

The GPA is an internationally recognised progressive measure of academic achievement over the duration of enrolment in a course and provides an overall view of a student's performance.

THE COLLEGE ENGLISH LANGUAGE PROGRAMS

English Language Programs

SUMMARY TABLE

COURSES	ENTRY REQUIREMENTS	INTAKES	DURATION 2018 ENGLISH/ EAP FEES: \$450 PER WEEK	EXIT LEVEL REQUIRED FOR ENTRY TO OTHER THE COLLEGE OR WESTERN SYDNEY UNIVERSITY PROGRAMS
EAP 1 Pre-Intermediate Level	<ul style="list-style-type: none"> → The College EAP Placement English Entrance Test 25%+ → IELTS (Academic) 3.5+ → TOEFL 400/IBT 32 → Pearson (Academic) 25 	February, April, July, September, November	10 weeks	50% pass entry to EAP 2
EAP 2 Intermediate Level	<ul style="list-style-type: none"> → The College EAP Placement English Entrance Test 40%+ → IELTS (Academic) 4.5 → TOEFL 475/IBT 45 → Pearson (Academic) 30 	February, April, July, September, November	10 weeks	50% pass entry to EAP 3
EAP 3 High Intermediate Level	<ul style="list-style-type: none"> → The College EAP Placement English Entrance Test 50%+ → IELTS (Academic) 5.0 (less than 5.0 in writing, EAP 2) → TOEFL 500/IBT 55 (16 in writing) → Pearson (Academic) 36 	February, April, July, September, November	10 weeks	50% pass* entry to EAP 4 50% pass* entry to The College University Foundation Studies# *Including pass in tests #Except The College University Foundation Studies (Health Science/Nursing stream)
EAP 4 Upper Intermediate Level	<ul style="list-style-type: none"> → The College EAP Placement English Entrance Test 60%+ → IELTS (Academic) 5.5 (less than 5.0 in writing, EAP 3) → TOEFL 520/IBT 62 (17 in writing) → Pearson (Academic) 42 (no communicative score less than 36) 	February, April, July, September, November	10 weeks	50% pass* entry to EAP 5 50% pass* to The College University Foundation Studies (Health Science/Nursing stream) 50% pass* entry to The College Diploma Studies *Including pass in tests
EAP 5 Advanced Level	<ul style="list-style-type: none"> → The College EAP Placement English Entrance Test 70%+ → IELTS (Academic) 6.0 (less than 5.0 in any area, EAP 4) → TOEFL 540/IBT 73 (19 in writing) → Pearson (Academic) 50 (no communicative score less than 42) 	February, April, July, September, November	10 weeks	70% pass* entry to The College Master of Teaching Direct Entry English program 50% pass* entry to The College Diploma Studies 55% pass* entry to Western Sydney University courses requiring IELTS 6.5 60% pass* entry to Western Sydney University courses requiring IELTS 7.0 65% pass* entry to Western Sydney University courses requiring IELTS 7.0 (with 7 in all areas) *Including pass in all assessments
Module A: Reading and Writing Advanced Level	<ul style="list-style-type: none"> → The College EAP Placement English Entrance Test 75%+ → Overall IELTS (Academic) 6.5/7.0+ (5.5 in reading and/or writing) → TOEFL 560/IBT 28 → Pearson (Academic) (communicative scores between 43-49) 	January, April, June, October	6 weeks	50% pass* entry to The College Diploma Studies 55% pass* entry to Western Sydney University courses requiring IELTS 6.5 (6 in all areas) 60% pass* entry to Western Sydney University courses requiring IELTS 7.0 (6 in all areas) 65% pass* entry to Western Sydney University courses requiring IELTS 7.0 (with 7 in all areas) *Including pass in all assessments

THE COLLEGE ENGLISH LANGUAGE PROGRAMS

English Language Programs

SUMMARY TABLE				
COURSES	ENTRY REQUIREMENTS	INTAKES	DURATION 2018 ENGLISH/ EAP FEES: \$450 PER WEEK	EXIT LEVEL REQUIRED FOR ENTRY TO OTHER THE COLLEGE OR WESTERN SYDNEY UNIVERSITY PROGRAMS
Module B: Speaking and Listening Advanced Level	<ul style="list-style-type: none"> → The College EAP Placement English Entrance Test 75%+ → Overall IELTS (Academic) 6.5/7.0+ (5.5 in speaking and/or listening) → TOEFL 560/IBT 82 → Pearson (Academic) 58 (communicative scores between 43-49) 	June, November	4 weeks	50% pass* entry to The College Diploma Studies 55% pass* entry to Western Sydney University courses requiring IELTS 6.5 (6 in all areas) 60% pass* entry to Western Sydney University courses requiring IELTS 7.0 (7 in all areas) 65% pass* entry to Western Sydney University courses requiring IELTS 7.0 (with 7 in all areas) *Including pass in all assessments
Master of Teaching Direct Entry English program	<ul style="list-style-type: none"> → The College EAP Placement English Entrance Test 85%+ → The College EAP5 70% pass* or above → Overall IELTS (Academic) 7.0 (min of 6.0 in all areas) → TOEFL PBT 600/IBT 100 *Including pass in all assessments	March, September	12 weeks	60% pass* entry to Western Sydney University Master of Teaching course (Birth-5/ Birth-12 years, Primary, Secondary) *Including pass in all assessments
Communication in English (Beginner to Advanced)	→ There is no required level of English for this course	February, April, July, September, November	Students can enter every Monday for the general English course	

Note:

- Students with 6.5/7.0 overall but less than 5.5 in an area should be directed to the 10 week EAP 5 course.
- Reading and writing levels less than 6.0 take precedence over scores with less than 6.0 in speaking and listening.

English Language Programs Calendar

COURSE	START	FINISH	DURATION
Academic English for Tertiary Studies EAP 1, EAP 2, EAP 3, EAP 4 and EAP 5	12 February 2018 23 April 2018 9 July 2018 17 September 2018 26 November 2018*	20 April 2018 29 June 2018 14 September 2018 23 November 2018 8 February 2019*	10 weeks * 11 weeks
Advanced Academic English Skills Module A: Reading and Writing	2 January 2018 23 April 2018 4 June 2018 15 October 2018 7 January 2019	9 February 2018 1 June 2018 13 July 2018 23 November 2018 15 February 2019	6 weeks
Advanced Academic English Skills Module B: Listening and Speaking	4 June 2018 26 November 2018	29 June 2018 21 December 2018	4 weeks
Communicating in English	12 February 2018 23 April 2018 9 July 2018 17 September 2018 26 November 2018*	20 April 2018 29 June 2018 14 September 2018 23 November 2018 8 February 2019*	(Students can enter every Monday for the general English course) * 11 weeks
Master of Teaching Direct Entry English Program	19 March 2018 17 September 2018	8 June 2018 7 December 2018	12 weeks

* Denotes periods where the Christmas break is in effect: 22 December 2018 to 1 January 2019.

APPLICATION PROCESS

FINANCIAL REQUIREMENTS

International students are required to have genuine access to sufficient funds while studying in Australia. Funds should be sufficient to contribute to the cost of travel, tuition, school costs for any dependants, and living costs.

EXPENSES PER TYPE	PER PERSON	AMOUNT REQUIRED IN AUD\$
Travel	Applicant	Return airfare to Australia
	Family members	One return airfare to Australia per person
Tuition	Applicant	Course fees – refer to course section on page 40 or westernsydney.edu.au/internationalfees
	School-age children aged 5-18	Refer to internationalschool.edu.au/trp

www.border.gov.au/Trav/Stud/More/Student-Visa-Living-Costs-and-Evidence-of-Funds



CHOOSE YOUR COURSE, CHECK ENTRY REQUIREMENTS AND LOCATION AT
westernsydney.edu.au/find_a_course

If you are applying to study at Sydney City campus visit westernsydney.edu.au/city/apply



CHECK FEES AND COSTS
INTERNATIONAL STUDENTS MUST HAVE SUFFICIENT FUNDS TO CONTRIBUTE TO THE COST OF TRAVEL, TUITION, SCHOOL COSTS FOR ANY DEPENDENTS AND LIVING COSTS
westernsydney.edu.au/international/fees



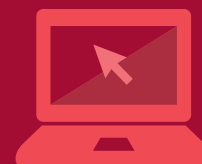
PREPARE TO APPLY
westernsydney.edu.au/international/apply



ACCEPT YOUR OFFER AND PAY YOUR FEES



RECEIVE YOUR OFFER OR ASSESSMENT OUTCOME



APPLY DIRECT

UNDERGRADUATE OR POSTGRADUATE
student-westernsydney.studylink.com

RESEARCH

westernsydney.edu.au/applyonline

APPLY VIA UAC INTERNATIONAL IF SITTING THE AUSTRALIAN HSC OR IB
uac.edu.au/international



THE UNIVERSITY WILL ISSUE YOUR ELECTRONIC CONFIRMATION OF ENROLMENT (eCoE). USE YOUR eCoE TO APPLY FOR YOUR STUDENT VISA
westernsydney.edu.au/international/admissions/obtaining_a_visa



ENROL, ARRIVE IN SYDNEY, AND ATTEND ORIENTATION
westernsydney.edu.au/arrive



START CLASSES
westernsydney.edu.au/starting

Entry Requirements for Western Sydney University and The College

ACADEMIC ENTRY REQUIREMENTS

Admission to Western Sydney University is competitive and is on the basis of academic merit. Visit westernsydney.edu.au/international/admissions for minimum academic entry requirements, by country, for admission into courses at the University and The College.

ENGLISH ENTRY REQUIREMENTS

All international students must have a good command of written and spoken English. If you do not meet the University's English language entry requirements, English language pathway programs are available at Western Sydney University The College. For more information, see pages 76, 83-84 or visit westernsydney.edu.au/thecollege/english_programs.

English not your first language?

If English is not your first language, you are required to demonstrate proficiency by achieving the prescribed level in an approved English examination or test before you can receive a full offer of admission. See the table below and refer to the English Language Entry Requirements Table westernsydney.edu.au/international/home/apply/admissions/entry_requirements.

English is your first language?

If your first language is English, or if you can provide satisfactory evidence that your secondary or tertiary studies were undertaken in English, you may be considered to have met the Western Sydney University English requirements.

PROGRAM/DISCIPLINE	IELTS (academic version only)	TOEFL internet-based score	Pearson Test of English Academic (PTE)
WESTERN SYDNEY UNIVERSITY COURSES			
All undergraduate, postgraduate and research courses (except the below)	6.5 overall score (min 6.0* in each subtest)	Total 82: Writing 21, Speaking 18, Reading 13, Listening 13	58 overall; No communication skills less than 50
B Medicine/B Surgery and M Clinical Psychology	7.0 overall (min 7.0* in each subtest)	Total 100: Writing 27, and all sub-tests 22	Not applicable
M Teaching degrees	7.5 overall (min 7.0 in reading and writing, and min 8.0 in speaking and listening)	Total 105: Writing 24, Speaking 26; Listening 28 and Reading 24	78 overall; Speaking 79; Listening 79; Reading 65; Writing 65
THE COLLEGE COURSES			
Diploma program	6.0 overall (min 5.5 in each subset)	Total 70: Writing 20, Speaking 16, Listening and Reading 11	50 overall; No communication skills less than 42
University Foundation Studies program (Arts, Business, Engineering, Information and Communications Technology, and Science streams)	5.5 overall (min 5.0 in writing)	Total 59 (minimum 18 writing)	42 overall; No communication skills less than 36
University Foundation Studies program (Health Science/Nursing stream)	6.0 overall (min 5.0 in writing)	Total 80 (minimum 21 writing)	50 overall; No communication skills less than 40

Note: Evidence of English proficiency is valid for a period of two years from the date of the test or the date of completion of tertiary academic studies.

* You will be required to enrol in the six-week intensive Advanced Academic English Skills – Module A: Reading and Writing at The College if you achieve:

- the required IELTS overall score but your band score in reading and writing is below the required score
- the required overall TOEFL score but reading and writing is below the required score.

All English Language programs are accredited courses that can give you the confidence and communication skills you need to meet the challenges of university study and attain a level of language proficiency required for entry to Western Sydney University. For more information, westernsydney.edu.au/thecollege/English

Western Sydney University reserves the right at all times to withdraw or vary courses listed within this publication. Variations may include, but are not limited to, location of its courses on our campuses or other locations. In the event that a course within this publication is to be changed or withdrawn, applicants will be advised via email to the email address specified by them on their application. With respect to a course location change, students should be aware of the need to accommodate such changes for the whole or part of courses for which they enrol. The University also reserves the right to update, amend or replace online versions of this publication without notice.

Western Sydney University is a multi-campus university, students may be required to travel to different campuses for some parts of their course.

Western Sydney University ABN 53 014 069 881 is a registered provider under the Commonwealth Register of Institutions and Courses for Overseas Students (CRICOS). Provider Number 00917K.

The College (CRICOS Provider Number 02851G) is a wholly owned entity of Western Sydney University. Academic Pathways program are delivered by Western Sydney University The College.

Published 2017.

CONTACTS

Western Sydney International

westernsydney.edu.au/international
+61 2 9852 5499
internationalstudy@westernsydney.edu.au

The College

westernsydney.edu.au/thecollege

Research

grs.enquiries@westernsydney.edu.au
westernsydney.edu.au/research

Admissions contacts

apply@westernsydney.edu.au

Sydney City campus

+61 2 8236 8037
study@city.westernsydney.edu.au
admissions@city.westernsydney.edu.au

Western Sydney University International College

Level 6, 100 George St
Parramatta NSW 2150
+61 2 96859883
mypathway@westernsydney.edu.au



IMPORTANT DATES

2018

February

23 International Orientation Day

March

5 Autumn Session starts

July

20 International Orientation Day
30 Spring Session starts

SGSM intake dates

Quarter 1

8 January – 25 March

Quarter 2

2 April – 17 June

Quarter 3

25 June – 9 September

Quarter 4

17 September – 2 December

More information:

westernsydney.edu.au/events

Sydney City campus sessions start in February, June and October.

For dates, please visit:

westernsydney.edu.au/city/about/important-dates

GET CONNECTED

Future students

westernsydney.edu.au/future_students

Events

westernsydney.edu.au/international/events

Facebook

[westernsydneyinternational](https://www.facebook.com/westernsydneyinternational)

Twitter

twitter.com/westernsydneyu

Instagram

[#westernsydneyu](https://www.instagram.com/westernsydneyu)

Youtube

[youtube.com/westernsydneyu](https://www.youtube.com/westernsydneyu)

Weibo

西悉尼大学

[weibo.com/uwsinternational](https://www.weibo.com/uwsinternational)

Wechat

西悉尼大学

UWS_China

Call

+61 2 9852 5499

Enquire online

westernsydney.edu.au/international/courseenquiry

Email

internationalstudy@westernsydney.edu.au



WESTERNSYDNEY.EDU.AU