

SAGE

ENGLISH LANGUAGE COLLEGES
AUSTRALIA



International Association
of Language Centres

The Australian Experience of a Lifetime



Airlie Beach ●

Adelaide ●

Melbourne ●

Hobart ●

sage sage sage sage

MELBOURNE
COLLEGE OF ENGLISH

TASMANIA
COLLEGE OF ENGLISH

SOUTH AUSTRALIAN
COLLEGE OF ENGLISH

WHITSUNDAYS
COLLEGE OF ENGLISH

WELCOME TO SACE COLLEGES AUSTRALIA

We welcome you to the College of your choice:

- SOUTH AUSTRALIAN COLLEGE OF ENGLISH
- TASMANIAN COLLEGE OF ENGLISH
- WHITSUNDAYS COLLEGE OF ENGLISH
- MELBOURNE COLLEGE OF ENGLISH



SACE Colleges' International Reputation

The South Australian College of English (SACE Adelaide), the first SACE College, was established and accredited in 1987 and is one of Australia's oldest independent English Language Schools.

SACE is proud of its worldwide reputation for excellence gained through many years of experience. SACE is renowned for:

- the provision of a broad range of English language **courses** of exceptional quality.
- the quality of **our professional and highly skilled teaching staff** who are carefully chosen for their ability to engage students in a stimulating learning environment. They are cheerful, friendly and caring.
- **service to students** including the SACE 'special care' homestay programme, counselling, and assistance to meet student needs in a caring and friendly environment.
- **innovation and flexibility in the choice of programmes.** SACE pioneered in Australia programmes such as English and Volunteering, English and Work Experience and SACE Work Oz.
- a good **balance of nationalities** from more than 30 countries in Europe, Asia and Latin America.

SACE is also recognised for providing **teacher training** courses for native and non-native speakers of English. SACE is one of the few Colleges in Australia approved to conduct University of Cambridge Certificate Courses (Certificate in English Language Teaching to Adults). SACE graduates are found teaching in universities and English colleges around the world.

SACE **linkages with leading Australian Universities, VET colleges and high schools**, provide SACE Students with recognised Direct Entry pathways for study and appropriate educational counselling during and on completion of their SACE Direct Entry Courses.

Future study and career enhancement, or travel and fun in the sun, SACE courses and College locations can help dreams to come true.

Choice Of Locations

Australia is a diverse country; the tropics, outback, abundant wildlife, world heritage national parks, large and small cities.

SACE Colleges offer a choice of locations and the chance to combine study in more than one location with "SACE Intercity Flyer".

Quality Learning Environment

The College offers:

- A wide range of courses, many of which can be combined to suit particular needs.
- Flexibility in course length and intensity.
- Counselling and advice to support individual learning requirements.
- Regular student progress tests and evaluations.
- A Self Access Centre to assist individual self-paced learning.
- Specialist English language teaching professionals who are selected for their teaching skills and enthusiasm.

The integrity of SACE courses is maintained through small class sizes and a balanced mix of student nationalities.

Practical Real Life English Programmes

Our aim is to help you communicate in English as quickly and efficiently as possible. The courses are designed to develop speaking, listening, reading and writing skills and are carefully structured to improve your fluency and accuracy.

Supplementing classroom textbooks, we use television and radio programmes, internet, newspaper and magazine extracts, guest speakers and class excursions to give an essential "real life" perspective of the English language as it is used.

Classroom activities encourage communication. Our English in the Community Programmes, plus our links with educational and community organisations, provide practical language opportunities.

Excellent Facilities

SACE students enjoy spacious air-conditioned classrooms, a computer and self access study centre with free WIFI, a student common room and kitchen.

Good Nationality Mix

Students represent a diverse range of nationalities from over 30 different countries. A great way to make friends from all over the world.



STUDENT SERVICES

Varied Social Club Programmes – Club SACE

Club SACE is a great way to make Australian and international friends with fellow students and teachers. It organises a range of inexpensive, fun social activities for students both during the week and on weekends.

These include farmstay weekends, trips to Kangaroo Island or Phillip Island, Flinders Ranges, wilderness weekends, tropical island resorts, Cradle Mountain National Park, winery visits, bush dances, barbecues, film afternoons and many sporting activities such as golf, diving, windsurfing, sea-kayaking, canoeing and sailing.

SACE Accommodation Service

SACE takes much care in selecting homestay and farmstay families to match student needs and suitability. You will be welcomed as a member of the family in their friendly, relaxed household, conveniently located near the College. SACE Airlie Beach also offers a student house for independent students. Hostel accommodation and a small number of furnished flats are also available. SACE student house accommodation is an alternative for SACE students.

Airport Transfer

A 24-hour airport welcome and transfer service is available, ensuring students safely reach their accommodation.

Educational Counselling

We would like students to make the most of their time at SACE. Our staff can help students with any aspect of their course in Melbourne, Adelaide, Hobart or Airlie Beach (Whitsundays).

On the first day students are advised of the appropriate person for advice on living in Australia, study at another SACE College, or further study in Australia.

Education Placement Services

SACE has had over 28 years of experience in providing free and independent advice and assistance to students who intend to continue their studies in Australia. SACE has close links with many leading Australian Universities, particularly in Adelaide, Melbourne, Hobart and Queensland. As well as VET and TAFE Colleges in Adelaide, Melbourne, Hobart, and the Whitsundays. SACE Colleges have worked closely with leading high schools in Adelaide, Hobart and the Whitsundays to ensure a smooth transition to secondary studies. SACE is able to provide students with educational advice and guidance, enrolment and application assistance for future academic goals, at High School, TAFE, VET College or University.

SACE Job Advisory Service

This free service is available to assist SACE students. Although SACE cannot guarantee students a job, SACE can advise students on finding paid and voluntary work.



THE MELBOURNE COLLEGE OF ENGLISH



Melbourne – The City

- Capital of Victoria, Melbourne is an elegant, modern, and friendly city with a busy café and cosmopolitan lifestyle. Melbourne has been ranked as the best Australian city to live and is the fashion centre of Australia.
- Melbourne is Australia's second biggest city with a population of 4.25 million people. It is beautifully situated on the Yarra River and around the shores of Port Phillip Bay.
- Melbourne is considered to be the cultural capital of Australia and is home to the National Gallery of Victoria and the famous open air Myer Music Bowl.
- The city beaches are safe and accessible by train, tram or bus from the city centre.
- Melbourne hosts the Australian Tennis Open (one of four Grand Slam World Championships) each January as well as the annual Formula One Grand Prix. It is also the centre for the Australian football game "Aussie Rules". Most Melbournians are "Aussie Rules" fanatics.
- The city is also home to many of Australia's well-known universities, high schools and educational institutions. Prince Charles, the future king of Great Britain spent some time at Geelong Grammar School.



Victoria – The State

- The state of Victoria is approximately the same size as Great Britain with a total population close to 6 million people.
- The Great Ocean Road, one of the world's most scenic coastal drives takes students past the 12 Apostles, surf beaches and holiday seaside towns. The Great Ocean Road is a fantastic way to travel from Melbourne to Adelaide and is a popular route for SACE students.
- Phillip Island is renowned as Victoria's wildlife haven and is home to one of Australia's most popular wildlife attractions, the Penguin Parade. Victoria also offers a huge choice of National Parks including the famous Wilson's Promontory, Grampians plus High Country and snowfields.
- Close to Melbourne, adventurous students will find great opportunities for exploring nature, rock climbing or abseiling, caving, sky diving or hang-gliding.
- Club SACE students can enjoy a wide variety of things to do in Melbourne including Melbourne's famous Zoo, Sea Life Melbourne Aquarium, National Victorian Art Gallery or visiting fashionable stores, trendy laneway cafés and bars as well as the many Melbourne Arts, film and food festivals.

Melbourne College of English Unique Features

- A great point of difference is the college's central location in the World Trade Centre on a beautiful section of the Yarra River. The river front hosts waterfront cafes and activities. The Exhibition and Convention Centre Buildings sit on the opposite South bank of the river.
- The college draws on the expertise and experience of SACE over the 28 years since its first accreditation in 1987.
- SACE Melbourne has 15 spacious air-conditioned classrooms located around the perimeter of the World Trade Centre Tower. Each classroom has a wall of windows with views across the city.
- SACE Melbourne's Direct Entry programme offers academic preparation and Direct Entry to selected Melbourne universities and tertiary institutions as well as SACE Direct Entry partners in Adelaide, Hobart and Queensland.
- SACE Melbourne students can also create their own language course adventure by combining their SACE Melbourne English course with English courses offered at SACE Adelaide, Hobart and Airlie Beach Whitsundays.



Climate

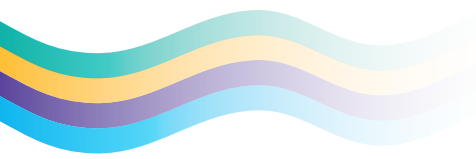
- The Melbourne climate of warm to hot mainly dry summers and cool winters provides an ideal environment for the city's outdoor living, sports and café culture.

LOCATION

- Located in World Trade Centre on the banks of the Yarra River. SACE Melbourne is only a 10 minute walk from the Southern Cross Railway Station on Spencer Street. Students can also use the free Melbourne City Circle tram which stops in front of the World Trade Centre.
- SACE Melbourne is within easy walking distance of the city centre, shops, cafes, art gallery and tertiary institutions. Students can enjoy the restaurants and cafes in the World Trade Centre or relax outside the college along the banks of the Yarra River.
- The water taxi in front of the college provides an exciting transport alternative taking students from SACE along the Yarra River to the football stadium and docklands or to the Melbourne Tennis Centre.



THE SOUTH AUSTRALIAN COLLEGE OF ENGLISH



Adelaide – The City

- Capital of South Australia, Adelaide is a multicultural, modern, friendly city with a wonderful lifestyle.
- Central location, midway between Sydney and Perth, Adelaide is the ideal location for exploring Australian cities and States.
- Adelaide, the Gateway to the Outback, is situated on the coast with miles of beautiful white beaches 20 to 30 minutes from SACE and the city centre.
- Well planned, with a population of one million people, it has earned praise as a world-class centre for education, the arts, science and technology.
- An ideal Mediterranean climate adds to its relaxed and friendly environment, and its excellence in the performing and visual arts has made it the Festival City of Australia. Adelaide and its environs host a procession of internationally renowned events such as the Adelaide Festival of Arts, Barossa Music Festival, Opera in the Outback, Pro Tour Cycling Event “Tour Down Under” as well as regional ethnic food, wine and cultural celebrations.
- Safe, friendly, value for money destination.



South Australia – The State

- South Australia is Australia's best kept secret. Spectacular tourist destinations include the unspoilt beauty of Kangaroo Island, the major wine producing areas of the Barossa Valley, Clare Valley and McLaren Vale, whale watching at Victor Harbor, the rugged Flinders Ranges, opal mining at Coober Pedy, and cruising on the River Murray.
- South Australia is the Gateway to the Great Australian Outback. One of the world's great train trips will take you via Alice Springs, near the famed Ayers Rock (Uluru) and Aboriginal carvings to Darwin.
- Safe, city beaches and miles of unspoilt, uncrowded beaches for surfing and swimming around the State, Kangaroo Island, Yorke Peninsula, Eyre Peninsula, etc.
- **CLUB SACE** students can enjoy a wide variety of fun leisure activities ranging from cycling, golf, hot-air ballooning, camel trekking, orienteering, bushwalking, wine tasting, camping in the Flinders Ranges, opal fossicking at Coober Pedy, swimming among sealions and dolphins at Bairds Bay, or visiting some of the best beaches in the world.
- Australia's longest river, the great Murray River, flows through South Australia offering a safe, exciting houseboat holiday destination for students one to two hours from SACE Adelaide.

SACE Adelaide Unique Features

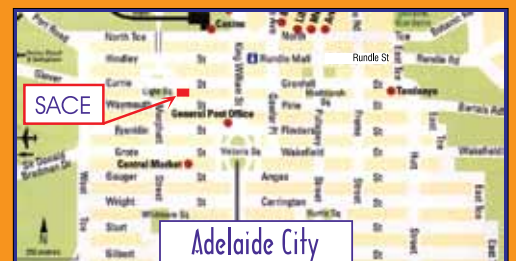
Established and accredited in **1987**, SACE Adelaide is proud to be a **leader in English language training**.

- SACE Adelaide is a member of the **International Association of Language Centres (IALC)**.
- SACE Adelaide is a recognised **Cambridge Teacher Training Centre**.
- SACE Adelaide students enjoy **supervised Self Access Centre** and **free WIFI** access.
- **Academic counselling**, educational referral and student welfare provided as requested.
- **Academic Preparation Programmes** prepare students for entry to **South Australian universities** and **high schools**.
- SACE Direct Entry Programmes prepare students for study at Flinders University of South Australia, TAFE South Australia, ICHM, LCB and other accredited educational institutions.
- Integrated SACE **Community Connections Programmes** to facilitate cultural understanding and better English Communication Skills.
- SACE Adelaide is the open TOEIC Test Centre for Adelaide.
- SACE Adelaide is the Cambridge Examination Centre in Adelaide.



LOCATION

- Located in one of Adelaide's historic buildings five minutes walk to the main shopping centre.
- In the cultural heart of the city, it is within easy walking distance of public transport, universities, art centres, museums, as well as shopping malls, cafes, banks, central market and cinemas. Nearby parklands and gardens are an attractive setting for College sport and picnics.

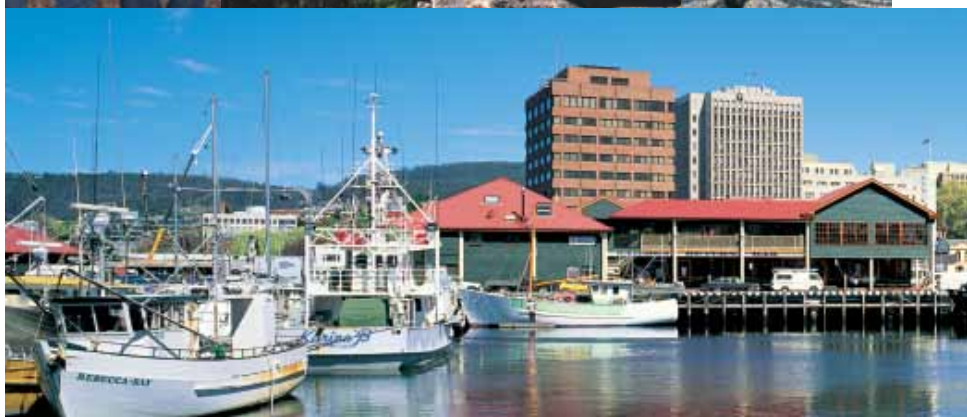


THE TASMANIAN COLLEGE OF ENGLISH



Hobart – The City

- Hobart, capital of Australia's island state of Tasmania.
- Population approximately 200,000 and Australia's second oldest city.
- Located at the base of Mount Wellington where the Derwent River meets the sea.
- Hobart surrounds a large harbour which overflows with yachts from all over the world each January at the conclusion of the Sydney to Hobart Yacht Race.
- Warm summers (average 23°C) and winters (13°C).
- Hobart's charm remains untouched by tourism. A perfect destination for students who do not want to be with a crowd of tourists, would like to enjoy an authentic Australian city with access to unspoilt and unpopulated beaches and countryside.



Tasmania – The State

- Tasmania is an island approximately the same size as Ireland.
- Similar latitude to Madrid, Spain.
- Easy access from Melbourne by air or sea (overnight ferry).
- Australia’s wilderness state, 2/3 of Tasmania consists of protected national parks, world heritage areas or state forests.
- Spectacular unspoilt areas provide unlimited scope to experience nature, from the sea to alpine mountain areas.
- Eco-tourism paradise – World Heritage Park walks and camping treks, white water rafting, rock climbing, abseiling, sea kayaking among dolphins, diving in Tasmania’s famed kelp forests and underwater caves.
- Tasmania has an extensive network of youth hostels and backpacker hostels providing economical and friendly accommodation around Tasmania.
- Walking and biking paradise.

Tasmanian College of English Unique Features

- Tasmanian College of English is an associate member of the International Association of Language Colleges.
- Tasmanian College of English is a SACE Teacher Training Centre offering University of Cambridge Teacher Training Courses and Teacher Refresher Courses.
- An **environmentally friendly** Campus, SACE Hobart offers special **English and Environment Programmes** as Special Studies for interested students. SACE Hobart is an active Tasmanian **Landcare** member. The College has received a number of **awards** from the **Hobart City Council** in recognition of its **achievements** and services to the **Tasmanian environment**.
- Tasmanian College of English **Community Connections Programme**, integrated in the language courses, provides students with linkage and insights to both city and country Tasmania.
- **English and Volunteering**, a feature SACE Hobart course, provides students the opportunity to live in and experience some of Tasmania’s world famous national parks and forests.
- Tasmanian College of English is the open TOEIC Test Centre for Hobart.
- IELTS and Direct Entry courses to TAFE Tasmania and University.
- Enjoy our “Garden Classrooms” in summer.
- Free internet, WIFI and email access available to all students.



International Association of Language Centres



ACPET
AUSTRALIAN COUNCIL FOR PRIVATE EDUCATION AND TRAINING



TOEIC
Authorised Test Centre

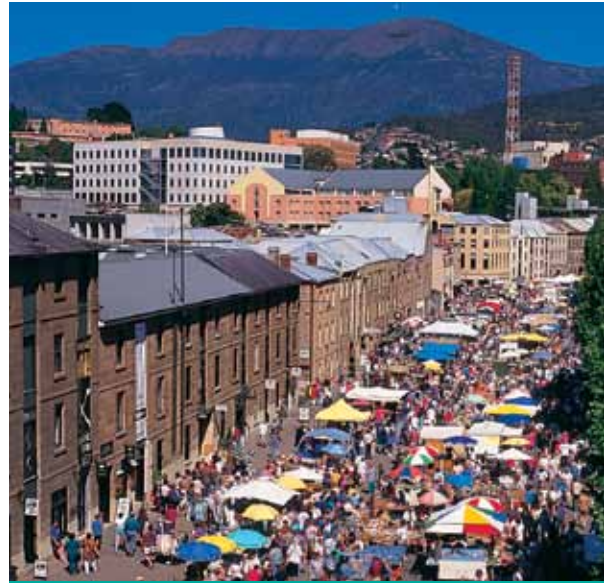
TASMANIA
Registered by the
Tasmanian Education Providers'
Registration (Overseas Students)
Act 1991



UTAS

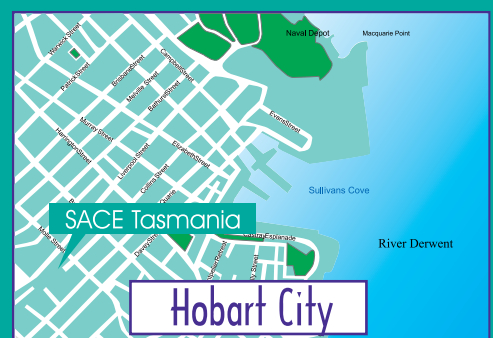
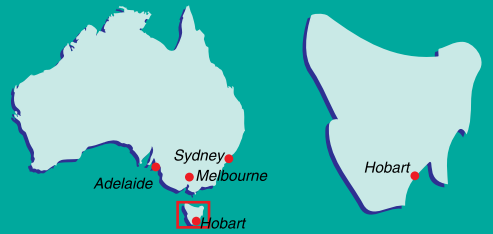


TAFE Tasmania



LOCATION

- Situated in a three storey heritage mansion, SACE Hobart’s charming renovated classrooms, self access/computer centre and student kitchen and common room reflect the warm friendly atmosphere of this former family mansion.
- Located 10 minutes by foot from Hobart city centre and public transport, SACE Hobart is close to Hobart’s independent schools, university and the delightful harbour area, popular market and café precinct of Salamanca Place.

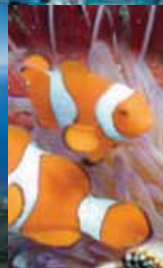


THE WHITSUNDAYS COLLEGE OF ENGLISH



Airlie Beach – The Town

- Departure town for the **Great Barrier Reef**.
- The resort town of Airlie Beach, on the Whitsunday coast, is one of the three most popular regional Australian tourism centres.
- **Airlie Beach** is a vibrant and exciting resort town situated by the clear tropical waters of the Whitsundays.
- It is a major centre for accredited courses in sailing and diving and a short boat trip to the many beautiful resort islands of the Great Barrier Reef.
- A magnificent man-made beachside lagoon provides safe all year round swimming and sunbathing.
- The town abounds with cafés, bars and music venues providing a very lively night scene to match the hardiest student's desire to 'party'.
- Friendly, relaxed lifestyle.

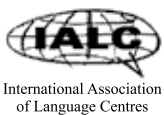


Why The Whitsundays

- Heart of the **Great Barrier Reef**.
- One of the three most popular regional Australian tourist destinations.
- A SACE location combining English study and adventure in the tropical Whitsundays.
- 74 magnificent islands in 100 magic miles.
- Diving, sailing, snorkelling and swimming paradise.
- The pristine waters have made the Whitsundays famous as the world's greatest aquatic playground. Whale watching (whales calve between July and September), coral spawning, hatching of turtles, crocodile cruises, as well as diving and snorkelling on the Great Barrier Reef, are some of the attractions available from Airlie Beach.
- Airlie Beach offers a very lively night scene.

Whitsundays College of English Unique Features

- Magnificent location, SACE Great Barrier Reef Whitsundays is a beautiful coastal walk or 10 minute bus ride to Airlie Beach, all season swimming lagoon, shops and entertainment.
- Spacious airconditioned classrooms in a modern building, computer centre, garden & kitchenette.
- SACE Great Barrier Reef Whitsundays is a TOEIC Test Centre.
- Special feature courses; English Plus Diving Courses leading to an Open Water Diver's Certificate; English Plus Sailing; IELTS and Direct Entry to Barrier Reef TAFE Hospitality Courses.
- Innovative courses: English and Work Oz (paid work placement) and English Plus Diving or Sailing Courses, and English plus Sail Learn to Earn
- Work Oz - Study and Work Programmes specially designed for Working Holiday Students.
- SACE Great Barrier Reef Whitsundays is an associate member of the International Association of Language Colleges (IALC).
- Free internet, WIFI and email access with language conversion available to all students.



How to get to the Whitsundays

- International flights to Sydney, Brisbane, Cairns.
- Domestic flights to the Whitsunday Coast Airport (Proserpine) or Hamilton Island (air taxis and shuttle ferries link flights to Hamilton Island with buses at Shute Harbour to Airlie Beach).
- Train/Bus from Brisbane or Cairns.

Climate

- Situated on the same latitude as Rio de Janeiro and Tahiti, the Whitsundays enjoys a mild tropical climate with daily temperatures varying little from month to month.
- The days are warm year round and evenings are sultry in summer, cooler in winter requiring a light jacket or sweater.

LOCATION

- The Whitsundays is centrally located on the Queensland coast midway between Brisbane and Cairns.
- The Whitsundays College of English is located in the beautiful coastal town of Airlie Beach, gateway to the Whitsunday Islands and the famous Great Barrier Reef.



SACE COURSES – GENERAL



General Intensive English Programmes

Choose to study in Melbourne, Adelaide, Hobart, Whitsundays or combination of campuses.

Intensive Plus	30 hours (25 General Intensive English + 5 hours of 1 to 1)
General Intensive English	25 hours per week
General Intensive English (standard)	20 hours per week
General English part-time	17 hours per week
English in the Teacher's House	On demand
Private Tuition	On demand

SACE General English programmes are designed to improve students' English language communication skills to prepare for future study, work, travel or career change.

Core classes concentrate on developing grammar, vocabulary, speaking, listening, reading, writing & pronunciation skills in real-life situations.

Afternoon classes, "Special Studies", allow students to specialise and choose one or two Special Studies from a wide range of Special Studies options. These include:

- Examination Preparation (IELTS, TOEIC)
- Academic Study Skills
- Business English
- English for Hospitality
- Conversation and Pronunciation
- Vocabulary Development
- Australian Studies
- English Environment Studies
- Advanced Writing/Grammar

Course Organisation

On the first day of each course students complete a full placement test before being placed in the appropriate level:

- Beginner • Elementary • Pre-Intermediate
- Intermediate • Upper Intermediate • Advanced

Students' progress is monitored every four weeks. At the end of each term students also sit a Progress Test. At the end of the course students are awarded a SACE Certificate indicating their level achievement.

Course Content

General English programmes cover:

- Grammar • Speaking • Listening
- Reading • Writing • Pronunciation
- Vocabulary Development • Special Studies

A course textbook is supplemented by a wide variety of teaching resources. This variety of teaching resources is designed to make courses as relevant as possible to the needs and interests of students, as well as reflect the Australian environment.

After Class Assistance

Teacher supervised Self Access is available free of charge to all students after 3.15pm (Adelaide & Hobart Campuses). Additional assistance available on demand at SACE Melbourne and Great Barrier Reef Whitsundays campus.

Educational Counselling

Individual attention to assist students learn effectively, ensuring students gain maximum benefit from their stay at SACE.

Course Duration: 2 - 48 weeks
Maximum Class Size: 16 students
Average Class Size: 12 students

	MONDAY	TUESDAY	WEDNESDAY	THURSDAY	FRIDAY
9:00 11:00	Introduction to new unit, theme, grammar point & function presented & practised.	Course work, further presentation & practice, speaking.	Course work, reading & vocabulary development.	Course work, writing activity.	End of unit test. Audio visual.
11:30 1:00	English & the media, discussion games, vocabulary development.	Listening & speaking activity, English skills for academic purposes.	English through research & project work.	Revision & consolidation.	Conversation, debate & discussion.
1:45 3:15	SPECIAL STUDIES 1 eg. English for Business Purposes.	SPECIAL STUDIES 2 eg. Conversation & Pronunciation.	SPECIAL STUDIES 1 eg. English for Business Purposes.	SPECIAL STUDIES 2 eg. Conversation & Pronunciation.	WEEKLY EXCURSION OR SELF ACCESS LEARNING
3:30 5:00	SELF ACCESS - Self access for individual self paced learning, includes access to computers; CD rom, video, internet, email, practice tests.				

* Adelaide and Hobart

PATHWAY PROGRAMMES TO FURTHER EDUCATION

English For Tertiary Study (Direct Entry Programmes)

SACEETS Courses are for students planning to study at an Australian University, TAFE, VET or Hospitality Institution. The courses are designed for students who need to improve their English language to meet admission requirements of these tertiary institutions.

SACE ETS courses include academic English training in:

- Academic reading and critical analysis
- Academic writing
- Academic listening and note-taking
- Oral presentations and tutorials
- Research and study skills
- Grammar

Course Organisation

Entry Requirements;

IELTS Preparation: (ETS I) SACE Intermediate / IELTS 5.0 / equivalent

ETS II: (Adv) SACE ETS I / IELTS 5.5 / equivalent

ETS III: (Adv) SACE ETS II / IELTS 6.0 / equivalent

Direct Entry Pathways: University, TAFE, VET, ICHM and LCB



Entry Level: Upper Intermediate
Minimum Course Length: 12 weeks
Age: 16+

Academic English Programmes

INTERNATIONAL SECONDARY SCHOOL BRIDGING PROGRAMMES

Academic Bridging Programmes for students preparing for entry into Australian high schools in Adelaide, Hobart and the Whitsundays.

Course Organisation

General English

The General English Language Programme focuses on developing the students' English skills in the four macro skill areas of: speaking, listening, reading, writing. These classes are highly interactive, encouraging students to communicate in real-life situations.

English For Academic Purposes

Independent learning habits and good study skills are essential skills for secondary school students in Australia. Skills covered in this component include:

- cultural and academic orientation;
- skimming, scanning and note taking techniques;
- research skills and independent learning techniques;
- oral presentation skills.

Accommodation

SACE also provides guardianship and special homestay placement for all high school students without adult family supervision in the city of their choice.

Entry Level: Elementary
Duration: 12 to 48 weeks

IELTS Preparation

The SACE IELTS Preparation programme is an intensive 12 to 24 week course designed to prepare students for further study or for the 4 main areas of the IELTS exam

- Speaking
- Listening
- Reading (Academic + General)
- Writing (Academic + General)
- Plus IELTS exam strategies and techniques and IELTS Examination practice

The International English Language Testing System (IELTS) assesses the level of English of non-native English speakers who require English for Academic, Professional purposes or for visa application for Australian Immigration.

SACE	Further Study Pathway
International Secondary Preparation Programme	SECONDARY SCHOOL • Adelaide • Hobart • Whitsundays
Intensive English/ IELTS Preparation	VOCATIONAL COLLEGE (TAFE/HOSPITALITY/TOURISM) • Adelaide • Hobart • Melbourne • Whitsundays
English for Tertiary Studies II, III	UNIVERSITY & HOTEL MANAGEMENT • Adelaide • Hobart • Melbourne • Whitsundays

Entry Level: Intermediate
Duration: 12 to 24 Weeks
Age: 16+

Intensive English & University Studies (English & Study Abroad Programmes)

Offered at SACE Adelaide this programme offers a unique opportunity to improve English language and pursue university study and university credit.

Study Abroad Units are generally selected from the Humanities and Social Science areas and include; Australian Studies, Asian Studies, Commerce, Computer Science, Economics, English Literature, Education, Earth and Environmental Science.

Entry Level: Upper Intermediate

Duration: 6 or 12 months
Age: 16+

Evergreen (Seniors) Programme

SACE Evergreen Programme consists of English language classes in the morning plus three organised afternoon cultural activities each week. Evergreen students are also welcome to join the Club SACE activity programme organised each week. Available in Melbourne, Adelaide, Hobart and Great Barrier Reef Whitsundays or any combination of campuses. Evergreen programmes are available for students with Visitor & Working Holiday Visas.

WORK, VOLUNTEERING + TEACHER TRAINING PROGRAMMES

Work Oz - Study and Work Programme

Work Oz, a SACE study and work programme assists students to prepare for and find temporary work in Australia.

The Work Oz programme includes a minimum 4 week General Intensive English course, plus an employment preparation and job placement assistance programme.

Work placement includes jobs in restaurants, cleaning, fruit picking, hospitality and other manual work in Adelaide and the Whitsundays.

Entry Level: Intermediate
Minimum Course Length: 4 weeks
Age: 18+

English & Work Experience Programme (internship)

The South Australian College of English, an Australian leader in this area, has successfully conducted English and Work Experience Programmes since 1990. Our English and Work Experience Programme gives students the opportunity of developing professional work skills whilst practising English in the workplace. Work placements are unpaid. Students complete a General Intensive English course followed by a work experience placement.

Popular work experience placements include:

Business | Accounting and Finance | Architecture | Media and Public Relations | Tourism and Hospitality | Education | Conservation and Environmental areas | Child Care | Information Technology

Entry Level: Upper Intermediate
Minimum Course Length: 4 weeks
Age: 18+

English Plus Volunteering

Another course pioneered by SACE, our English and Volunteering Programme, offers students the opportunity to learn more about the Australian environment by participating in volunteer placements in national parks or conservation areas. Minimum full-time General Intensive English course length is 4 weeks.

Minimum Course Length: 4 weeks
Age: 18+

Business English Programmes

SACE is an experienced provider of Business English Programmes. SACE Business English Programmes have helped prepare students for work experience placements, business examinations, careers and future study.

SACE Business English Programmes, offered as Special Studies in the afternoons (as part of the General Intensive English Programmes), present students with simulated business situations and opportunities to develop their business communication skills. Business vocabulary, written and spoken business English covering a range of current business topics, individual projects, business organisation, business and marketing surveys, and guest speakers,

reflect some of the real life activities incorporated in the course.

SACE Adelaide, Hobart & Great Barrier Reef Whitsundays are authorised TOEIC Test Centres.

English For TESOL

A 4 week course providing a foundation in the fundamentals of teaching knowledge needed in the English language teaching classroom. The course will also prepare students for the Cambridge Teaching Knowledge Test (Cambridge TKT).



SACE TEACHER TRAINING PROGRAMMES

SACE Teacher Training Programmes

The SACE Teacher Training Centre was established in Adelaide in 1992 to train English language teachers.

SACE offers teacher training courses to **native** and **non-native speakers** of English. SACE is an approved University of Cambridge Teacher Training Centre offering teacher training programmes leading to the University of Cambridge qualification in teaching English. SACE graduates have found teaching employment in Asia, Europe and South America.

Cambridge Certificate In English Language Teaching To Adults (CELTA)

The Cambridge CELTA is the most widely recognised international teaching qualification for English language teachers. Designed to provide a practical teaching qualification for those without previous teaching experience the CELTA course includes, EFL methodology, language analysis and a review of current teaching materials, as well as assessed teaching practice, form the main components of the course.

Credit granted by many Australian Universities.

SACE COURSES

Cambridge Examination Programmes

Choose to study Cambridge at SACE in Melbourne, Adelaide, Hobart or Whitsundays Campuses

- Preliminary English (PET)
- First Certificate in English (FCE)
- Certificate of Advanced English (CAE)
- Certificate of Proficiency in English (CPE)

Choose from the Melbourne College of English, South Australian College of English, Whitsundays College of English & the Tasmanian College of English to prepare for the internationally recognised English language qualification
SACE Adelaide is the authorised Cambridge Test Centre in Adelaide.

Course Organisation

Cambridge CAE is recognised by the Australian Department of Immigration. The Cambridge CAE is also recognised for entry to undergraduate and post graduate university courses.

Students are sent a Pre-Test to allow SACE to advise their English language proficiency and appropriate examination.

On the first week of each Cambridge Course students complete a range of sample Cambridge tests. Students are individually counselled on their strengths and weaknesses, appropriate examination and study plan. All aspects of the examination are covered in the course. Examination practice and exam techniques are an integral part of all courses.

Individual counselling, weekly progress reviews and additional Self Access assist students achieve as much progress as possible.

Maximum Class Size: 15
Full-time Course: 25 hours per week (Melbourne 20 hours per week)

Sample Cambridge Timetable

Adelaide/Hobart

	MON	TUE	WED	THU	FRI
9:00	Introduction Grammar Vocabulary	Grammar in Use	Listening/ Reading	Writing	Test - Vocabulary & Grammar
11:00	Speaking	Writing Activities	Pronunciation Practice		Revision
BREAK 11:00 - 11:30					
11:30	Reading Authentic Material	Listening	Study Skills & Exam Techniques	Speaking & Discussion Topics	Examination Practice
1:00	Word Building/ Speaking	Speaking			
LUNCH 1:00 - 1:45					
1:45 3:15	Special Studies 1	Special Studies 2	Special Studies 1	Special Studies 2	Excursion/ Self Access
3:30 5:00	Study Club Self Access	Study Club Self Access	Study Club Self Access	SACE Movie	

English + Diving

The Whitsundays College of English is located in the diving paradise of the Great Barrier Reef.

The Whitsundays College of English offers an English + Diving Course.

Students complete a General English Language Course at a level appropriate to the student's English proficiency level. Theory and practical diving sessions which will lead to a Certificate in Diving form the Open Water Dive Course completed after the English component.

The Open Water Diver Course is divided into three segments: Academic training, Confined-Water training and Open Water training.



English + Sailing

The Whitsundays is home to 74 magnificent tropical islands and a great place to learn to sail.

SACE Great Barrier Reef Whitsundays, together with a leading Whitsunday Sailing School, offers the chance to progress students' English language skills whilst also gaining an internationally recognised sailing qualification, the Commercial Crew Certificate. English + Sailing consists of 4 weeks full time English plus 6 days Sail Training.

English + Tennis

Offered at the South Australian College of English, English + Tennis combines advanced level tennis coaching for students enrolled in a full-time General Intensive English language programme.

English + Golf

SACE English + Golf course provides the opportunity to learn and practice golf while completing a full-time English course.

SACE Intercity Flyer

Design your own SACE Intercity Flyer Programme and progress your language skills whilst discovering and exploring two or three distinctly different regions of Australia; Adelaide, Hobart or the Whitsundays.

Study Tours

Study Tours / English Plus Activities programmes organised in Adelaide, Hobart and Whitsundays. Quotes available on request.



HOW TO ENROL AT SACE

- 1 Complete the Enrolment Form and send it to your local SACE representative or directly to the SACE College of your choice.
- 2 When we receive your Enrolment Form SACE will send you a letter of acceptance or letter of offer and an invoice for payment of fees.
- 3 When SACE receives your fees we will send you a receipt and letter of acceptance or Confirmation of Enrolment (eCoE) depending on the type of visa you are applying for.
- 4 The Confirmation of Enrolment (eCoE) is needed if you intend to apply for a Student Visa. Submit it to the Australian Embassy/Consulate with your visa application.
- 5 If you have booked accommodation and airport transfer, advise SACE of your flight arrival details at least 4 weeks before your arrival. Your accommodation details will be forwarded to you on receipt of:
a) Your flight details, b) full payment of fees.

Your SACE Representative

Photo Credits:

- Tourism Queensland,
- Tourism Tasmania, Tom Keating, Steve Lovegrove, Andrew Briggs, Joe Shemesh, Grant Dixon, Richard Eastwood, Geoff Murray
- South Australian Tourism Commission



SACE Colleges correspondence to:

South Australian Campus

South Australian College of English (SACE Adelaide)

Woodards House
Level 1, 47 Waymouth Street
Adelaide South Australia 5000 Australia

Telephone: +61 (0)8 8410 5222
Facsimile: +61 (0)8 8410 5661
Email: registrar@sacecoll.sa.edu.au
Website: www.sacecoll.sa.edu.au

(CRICOS Provider No. 00094M & ABN 85 388 327 318)

Tasmanian Campus

Tasmanian College of English (SACE Hobart)

322 Liverpool Street
Hobart Tasmania 7000 Australia

Telephone: +61 (0)3 6231 9911
Facsimile: +61 (0)3 6231 9912
Email: admin@tas.sace.com.au
Website: www.collegeofenglish.com.au/tasmania

(CRICOS Provider No. 01758A & ABN 77 008 274 682)

Queensland Campus

Whitsundays College of English (SACE Great Barrier Reef Whitsundays)

Level 1, Suite 20
121 Shute Harbour Road
Cannonvale Queensland 4802 Australia

Telephone: +61 (0)7 4946 5655
Facsimile: +61 (0)7 4946 5833
Email: admin@qld.sace.edu.au
Website: collegeofenglish.com.au/whitsundays

(CRICOS Provider No. 02500G & ABN 72 099 790 566)

Victorian Campus

Melbourne College of English (SACE Melbourne)

Tower 4, World Trade Centre
Level 5&6, 18-38 Siddeley Street
Melbourne Victoria 3005 Australia

Telephone: +61 (0)3 9614 8975
Email: admin@melbourne.sace.com.au
Website: www.collegeofenglish.com.au

(CRICOS Provider No. 00094M & ABN 85 388 327 318)