

AWATAPU COLLEGE 2018 PROSPECTUS

WHAI MANA, WHAI ORANGA

www.awatapu.school.nz







Whai Mana, Whai Oranga




AWATAPU COLLEGE
ADMINISTRATION
Te Tari Whakahaere



PRINCIPAL

Gary Yeatman

Awatapu College challenges students to achieve excellence, develop a sense of self worth and become motivated and responsible citizens.

At Awatapu College we are proud of what we can offer to our students and of what our students can achieve.

I Invite you to join us.

DEVELOPING LEADERS

The development of leadership is regarded as extremely important at Awatapu College and opportunities are provided through a wide range of cultural, sporting and recreational activities. Each of our four Houses (Hillary, Rutherford, Ngata and Sheppard) has elected leaders who take an active part in organising and running inter-house competitions.

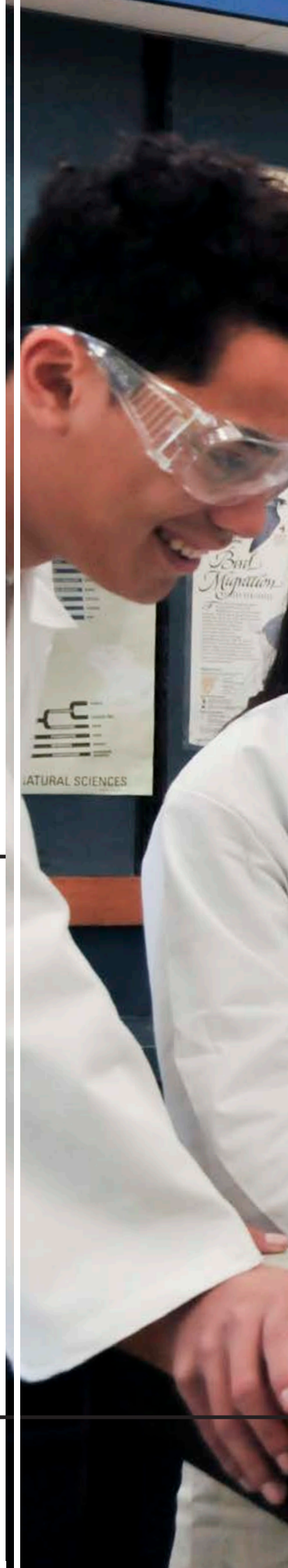


RISING STAR

Shannon Mihaere

- * NCEA L1 Excellence
- * NCEA L2 Merit
- * U.N. Youth High School Ambassador
- * Nga Mahi-a-ringā Putaiao Scholarship
- * Aotearoa Youth Declaration 2017 Scholarship
- * NZ Model United Nations Maori Scholarship

Awatapu College is an educationally innovative school that values academic excellence. We offer students a comprehensive range of subject choices from year 9 to year 13 leading to NCEA Level 1–3. We have an academic monitoring programme that ensures individual students achieve to their academic potential.

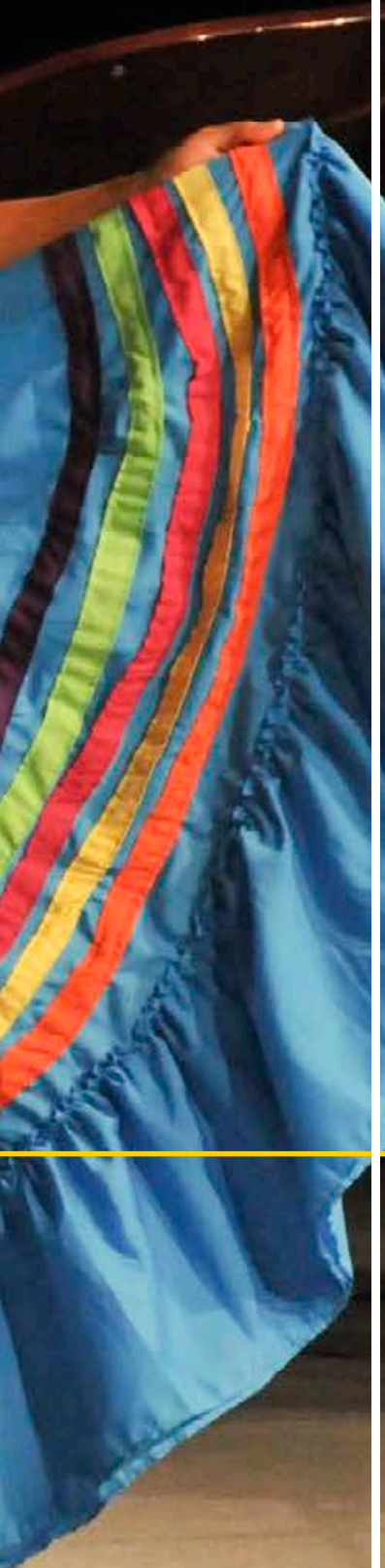




ACADEMIC EXCELLENCE



INTERNATIONAL



Education New Zealand National Award 'Excellence in International Student Support'

Awatapu College is recognised as one of the leading schools in New Zealand for International Students. Both short and long term students are accepted throughout the year.

Academic

A wide range of NZQA approved academic and vocational subjects are offered. Support for International Students includes:

- Preparation for NCEA qualifications and University Entrance
- Intensive ESOL classes
- Subject support classes and in - class support with teacher aides

Culture, Music and Sport

All international students are encouraged to participate in the following sporting and cultural activities:

- Festival of Cultures
- International Languages Week
- Visual and Performing Arts events
- School concerts and performances
- Team and individual sports
- Mayoral reception
- Annual ski trips, camps and field

Pastoral

The International Student Department delivers excellent support services through:

- A warm welcoming and supportive environment
- Carefully selected homestay families close to school
- Regular communication with agents, support people and parents

RISING STAR

Abii Bingle

- * Gold medal ICAS English
- * Excellence in Science
- * Excellence in Japanese
- * Excellence in Digital Technology



TECHNOLOGY



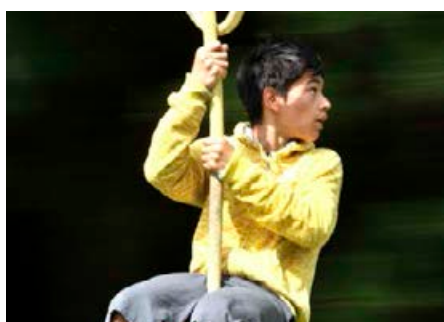
Our well-resourced Technology Department offers a pre apprenticeship programme. The rationale behind this is to provide an opportunity for students to begin the pathway to full trade qualifications. Over the two year course students will complete both practical and theory based Unit Standards that gain them credits towards NCEA at Level 2 and 3. At the same time the completed Standards can be credited against the Level 2 National Certificates in specific trade training. This course includes “on site” job experience.



RISING STAR

Phoenix Reid

- * NZ Artistic Roller Skating
- * National titles in Roller Skating
- * Oceania titles in Roller Skating
- * NCEA L1 Excellence
- * NCEA Excellence Japanese, Mathematics, Science



A group of students is walking away from the camera on a long, narrow metal grating bridge that spans across a river. The sun is low in the sky, creating a bright, shimmering reflection on the water's surface. The background shows dark, silhouetted hills under a hazy, golden sky. The students are dressed in casual outdoor attire, and some are carrying backpacks. The overall atmosphere is peaceful and scenic.

Awatapu College offers a variety of opportunities for outdoor education. In Year Nine all students go on an overnight camp with their house group. Time is spent getting to know the staff and students in the house and challenging themselves in various activities. Year 10 students have the opportunity to go on a one week camp in November. A variety of camps are offered, and activities include outdoor adventure, sports, cultural experiences and gaming. Senior Geography and Physical Education students also go on overnight camps as part of their learning, and many subjects, including Science, Classics, History, Geography, Music, Art and Tourism take day trips to enhance the delivery of the curriculum.

OUTDOOR EDUCATION



CREATIVE ARTS

Awatapu College offers many opportunities in the Creative Arts for students at all levels. All students are encouraged to join the many music, drama and co-curricular activities including productions, bands, choirs, 'Evento' Wearable Arts and many others.

The strength of Visual Arts in the college is reflected in the large number of students who select Art courses and in the high level of achievement they obtain. All teaching staff are practising artists in their field. We cover all five practical disciplines – painting, print making, design, sculpture and photography. Students gain both skills and creativity that enable them to move into a large variety of creative fields.



RISING STAR

Noah Macdermid

- * 1st National Secondary Schools Cross-Country
- * 3rd National Secondary Schools 3000m
- * Excellence Mathematics, Science, Mathematics, Japanese and Art



SPECIAL EDUCATION

The aim of the Awatapu Special Needs Department is to:

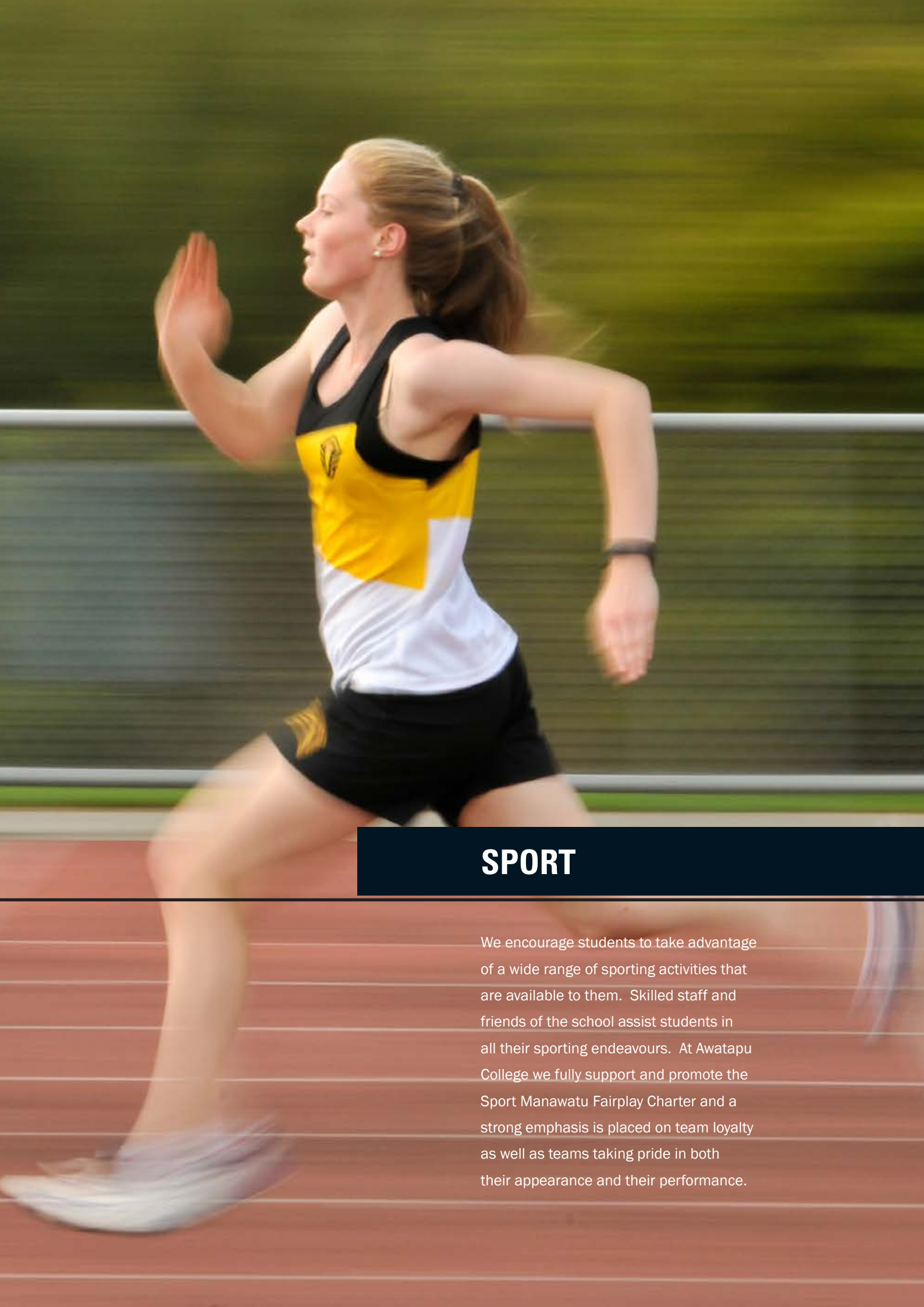
- Create a supportive environment to enable students to learn
- Enable access and inclusion within appropriate mainstream classes and activities
- Set individual goals that are relevant to each student (IEP)
- Maximise personal autonomy and independence
- Enable students to form social relationships
- Develop students' communication skills
- Encourage maximum mobility
- Prepare students for the opportunities, experiences and responsibilities of adult life



RISING STAR

Hayden Wilson

- * Excellence in National Athletics
- * NZSS Athletics Silver Medal
- * Excellence in Interschool athletics
- * Principal's Special Award



SPORT

We encourage students to take advantage of a wide range of sporting activities that are available to them. Skilled staff and friends of the school assist students in all their sporting endeavours. At Awatapu College we fully support and promote the Sport Manawatu Fairplay Charter and a strong emphasis is placed on team loyalty as well as teams taking pride in both their appearance and their performance.

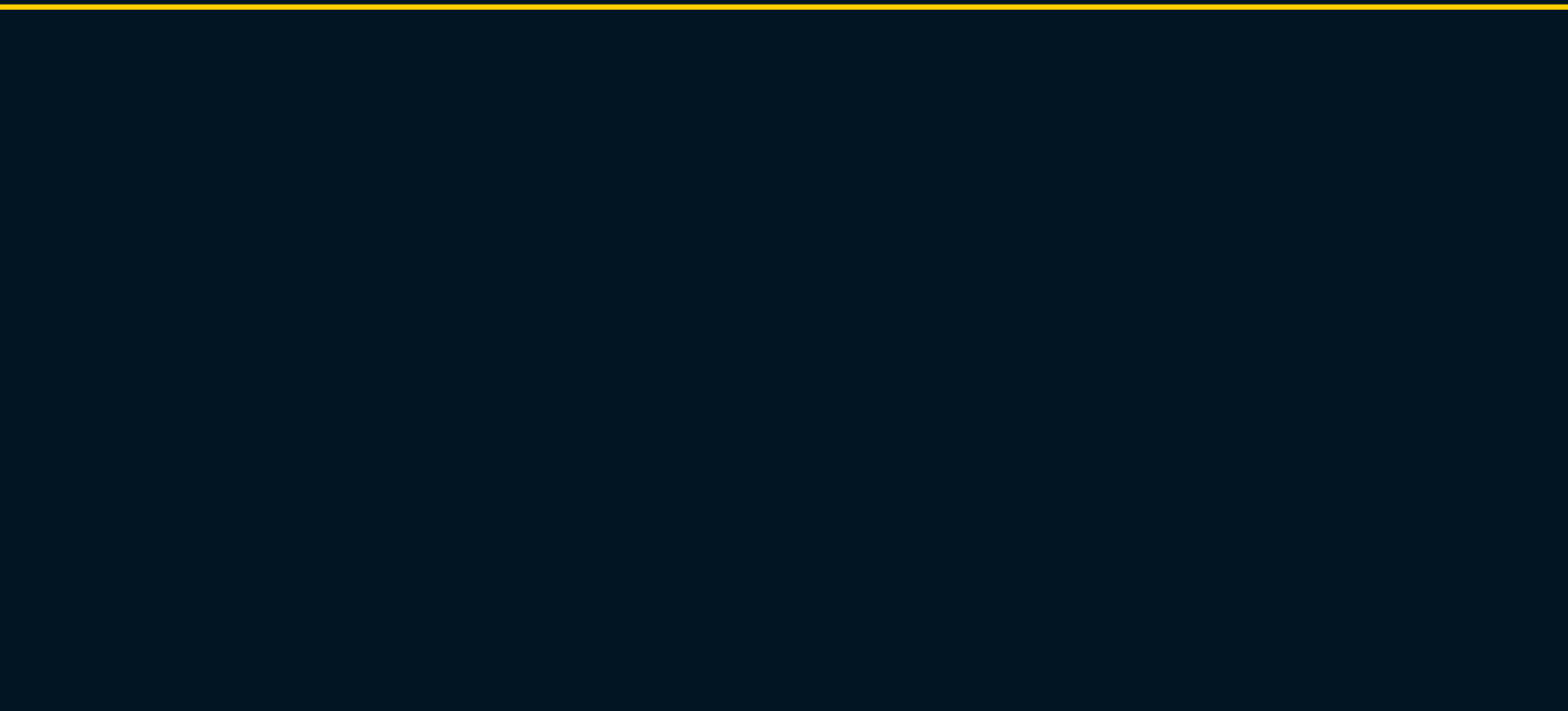
ACADEMIC OPPORTUNITIES

ESSENTIAL LEARNING AREA	YEARS 9 AND 10	YEAR 11	YEAR 12	YEAR 13
ENGLISH	English English Language	English English Internal English Language	English English Internal English Language Classical Studies Media Studies	English English Internal English Language Classical Studies Media Studies
THE ARTS	Art Drama Music	Art Drama Music	Art Design Art Painting Drama Music Photography Performing Arts Technology	Art Design Art History Art Painting Drama Music Photography
HEALTH AND PHYSICAL EDUCATION	Physical Education Nutrition and Health (Yr 9) Home Economics (Yr 10)	Physical Education Home Economics	Physical Education Health and Recreation Home Economics Sport Performance	Physical Education Health and Recreation Home Economics Sport Performance
LEARNING LANGUAGES	Japanese Te Reo Maori	Japanese Te Reo Maori	Japanese Te Reo Maori	Japanese Te Reo Maori
MATHEMATICS	Mathematics	Mathematics Mathematics Internal	Mathematics Statistics Mathematics Internal	Statistics Mathematics with Calculus Mathematics Internal
SCIENCE	Science	Core Science Science Internal	Biology Science Internal Chemistry Physics	Biology Science Internal Chemistry Physics
SOCIAL SCIENCES	Social Studies	Geography History Business Studies Employment Skills	Geography History Business Studies Employment Skills Tourism Classical Studies Gateway U-Skills Transition	Geography History Tourism Classical Studies Employment Skills Gateway Business Studies
TECHNOLOGY	Digital Technology Hard Materials Technology Engineering Skills (Yr 10) Furniture Design (Yr 10) Soft Materials Tech Drawing (Yrs 9/10) Wood Skills (Yr 10) Graphics	Digital Technology Soft Materials Furniture Design Furniture Construction Technology (Wood Bias) Mechanical Engineering Graphics Electronics Engineering & Construction Drawing Prototyping & Digital Engineering Mechanical Engineering Tech	Digital Technology Soft Materials Furniture Design Furniture Construction Technology (Wood Bias) Mechanical Engineering Computer Studies Central Districts Trade Academy U Skills-Automotive Graphics Engineering & Construction Drawing Prototyping & Digital Technology Mechanical Engineering Tech Auto Engineering Trade Academy	Digital Technology Soft Materials Furniture Design Furniture Construction Technology (Wood Bias) Mechanical Engineering Computer Studies Central Districts Trade Academy U Skills-Automotive Engineering & Construction Drawing Prototyping & Digital Technology Mechanical Engineering Tech Auto Engineering Trade Academy

SPORTING OPPORTUNITIES

Archery Athletics Badminton Basketball Canoe Polo Cricket Cross Country	Cycling Equestrian Football Golf Hockey Inline Hockey	Karate Mountain Biking Multisport Netball Orienteering Rugby	Skiing Snowboarding Small bore Rifle Shooting Squash Swimming	Table Tennis Tennis Touch Rugby Volleyball
---	--	---	--	---





Whai Mana, Whai Oranga

AWATAPU COLLEGE, 434 Botanical Rd, Palmerston North, New Zealand

Telephone +64 6 356 4817
Email: execsec@awatapu.school.nz

Facsimile +64 6 356 4819
Website: www.awatapu.school.nz

